

REVISIONS
 Dim. Lots: 80-89 per Deeds. C.Sh. 798.
 Lots 64 & 65 Cons'd Per App. 2408 C.Sh. 1247.
 Dim. Lots, 7, 20, 40 per Bauersfeld. C.Sh. 1473D.
 Lots 50 & 51 Cons'd. Per App. C.Sh. 3331.
 Lots 57 & 61 CORRECTED PER DEED C.SH. 9709
 Lots 44 & 47 CONS'D PER O.O. C.SH. 9881
 Lots 66 THRU 79, Des. Ch Per P.L.S. C.Sh. 301A
 Lot 33/34 PER O.O.; C.Sh. 76-096.
 Lots 64/65 & 1 PER DEED; Lot 66 PER DEED PACK; C.Sh. 76-096.
 Lots 56 & 68 PER DEED; C.Sh. 77-138.
 Lots 64 & 65 PER. DEED; C.Sh. 78-078
 Lots 46/47, 48, 49, CONS'D PER. O.O.
 C.Sh. 86-230
 Lots 64, 65 CORR PER P.L.S. C.H. SH. 03-105

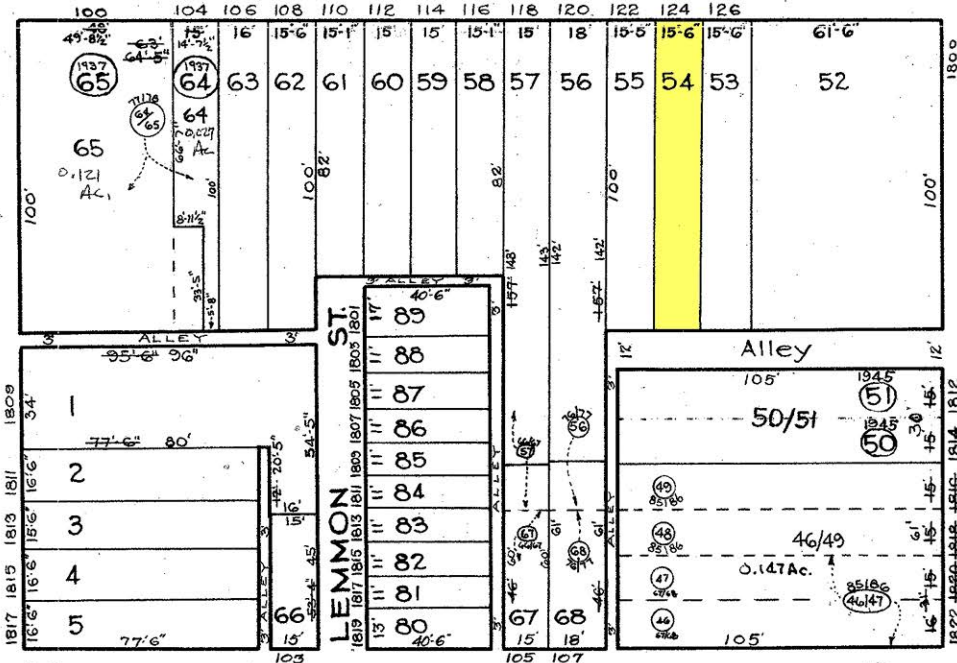
244

S. FULTON

AVE.

ST.

ST.



227

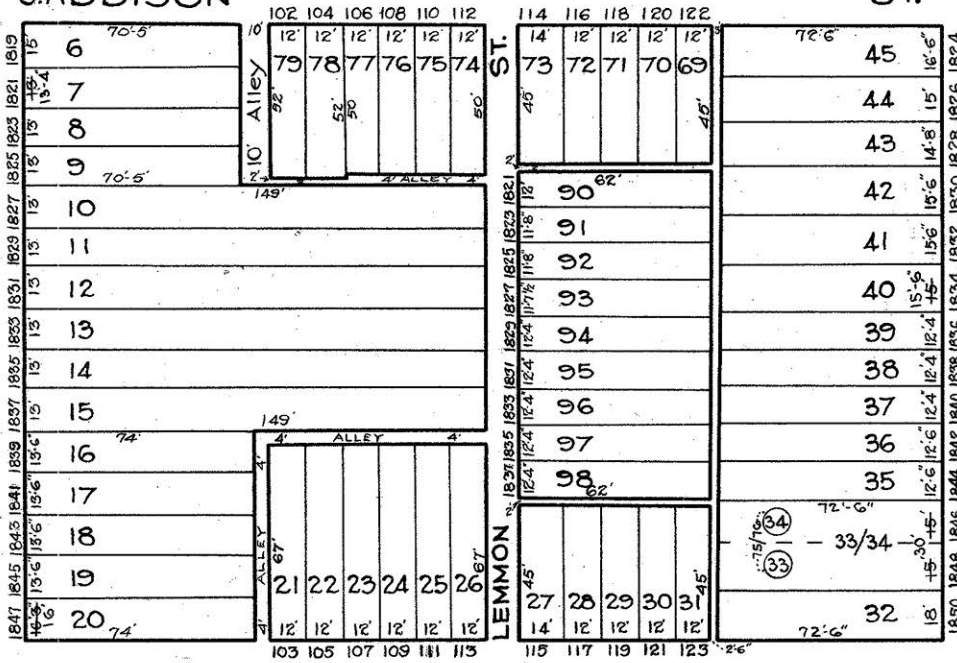
260

S. ADDISON

ST.

W. LOMBARD

W. PRATT



S. MONROE

ST.

242

NOTICE

THIS IS A REAL PROPERTY PLAT AS PROVIDED FOR UNDER ARTICLE 76(d) OF THE CITY CHARTER. IT IS COMPILED FROM TITLE AND OTHER SOURCES AND IS NOT AN AUTHENTIC SURVEY.

CITY OF BALTIMORE
 DEPARTMENT OF PUBLIC WORKS
 BUREAU OF SURVEYS
 PROPERTY LOCATION DIVISION

WARD 19 SECTION 8
 BLOCK 243

SCALE 1 INCH = 40 FT. DATE July 1929

TRACED BY G. Moorehead

LETTERED BY G. Moorehead
 Jos. J. Rokosky

CHECKED BY