

REVISIONS
 Lot 7/8 per App. No. 866/67 Dated 5-14-32 C.S. 608 Also App. 1070
 Lots 42 & 43 CONS'D PER O.O. C.S. 06-332

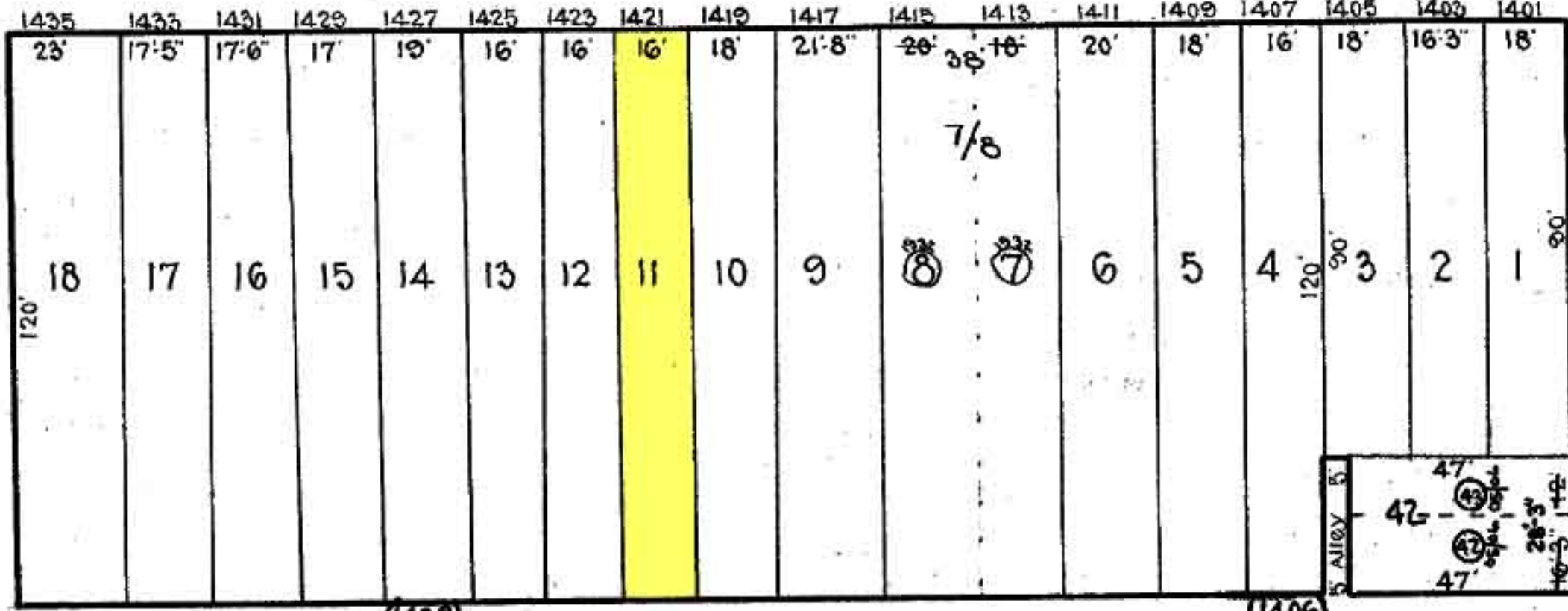
N. NORRIS ST.

197

W. BALTIMORE ST.

ST.

ST.



ST.

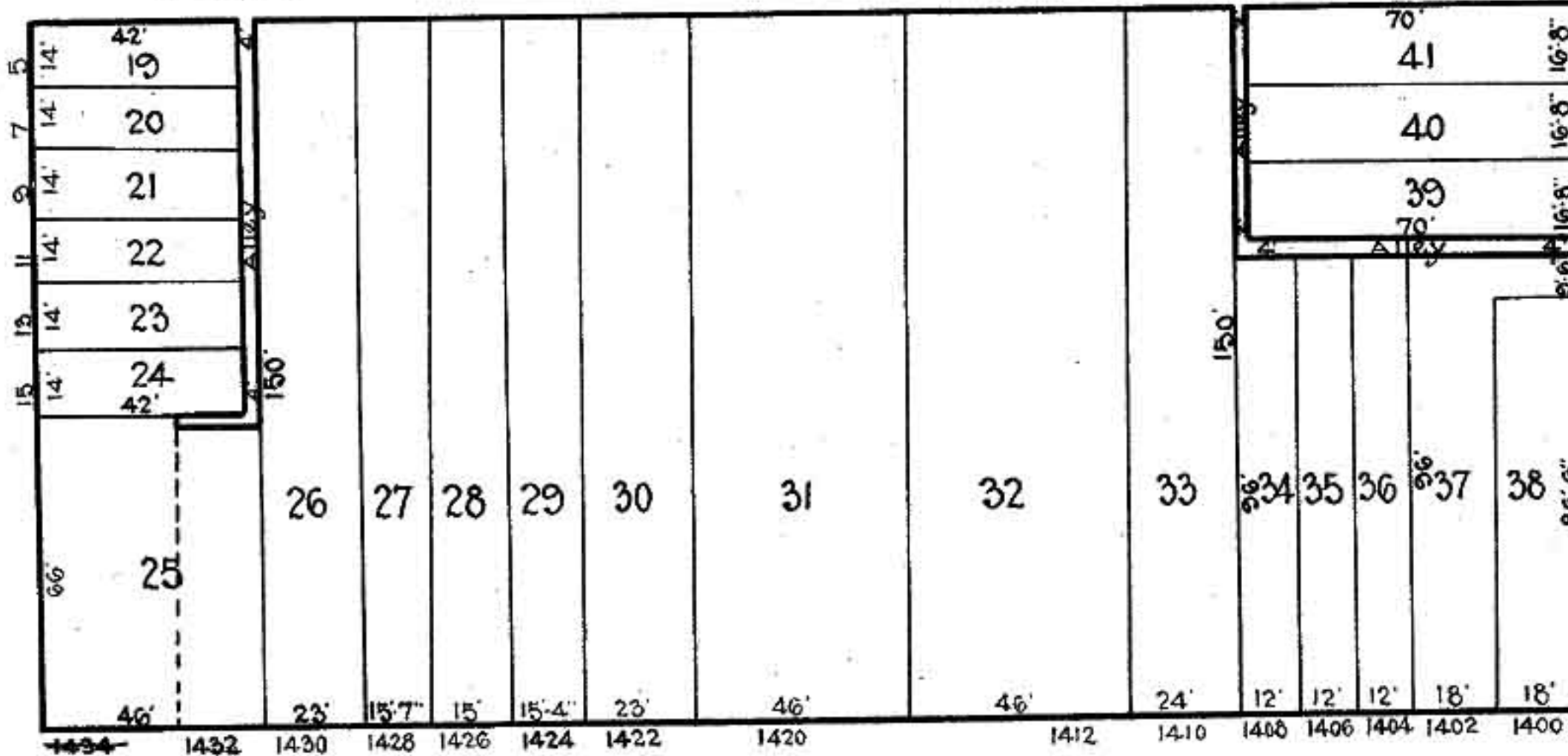
213

215

BOOTH ST.

ST.

S. STRICKER



S. CALHOUN

HOLLINS ST.

ST.

S. NORRIS ST.

231

TRACED BY Geo. J. Moorhead

LETTERED BY W. M. Lee

CHECKED BY _____

NOTICE

THIS IS A REAL PROPERTY PLAT AS PROVIDED FOR UNDER ARTICLE 76(d) OF THE CITY CHARTER. IT IS COMPILED FROM TITLE AND OTHER SOURCES AND IS NOT AN AUTHENTIC SURVEY.

CITY OF BALTIMORE
 DEPARTMENT OF PUBLIC WORKS
 BUREAU OF SURVEYS
 PROPERTY LOCATION DIVISION

WARD 19 SECTION 13
 BLOCK 214

SCALE 1" = 40' 0" DATE Oct. 1929