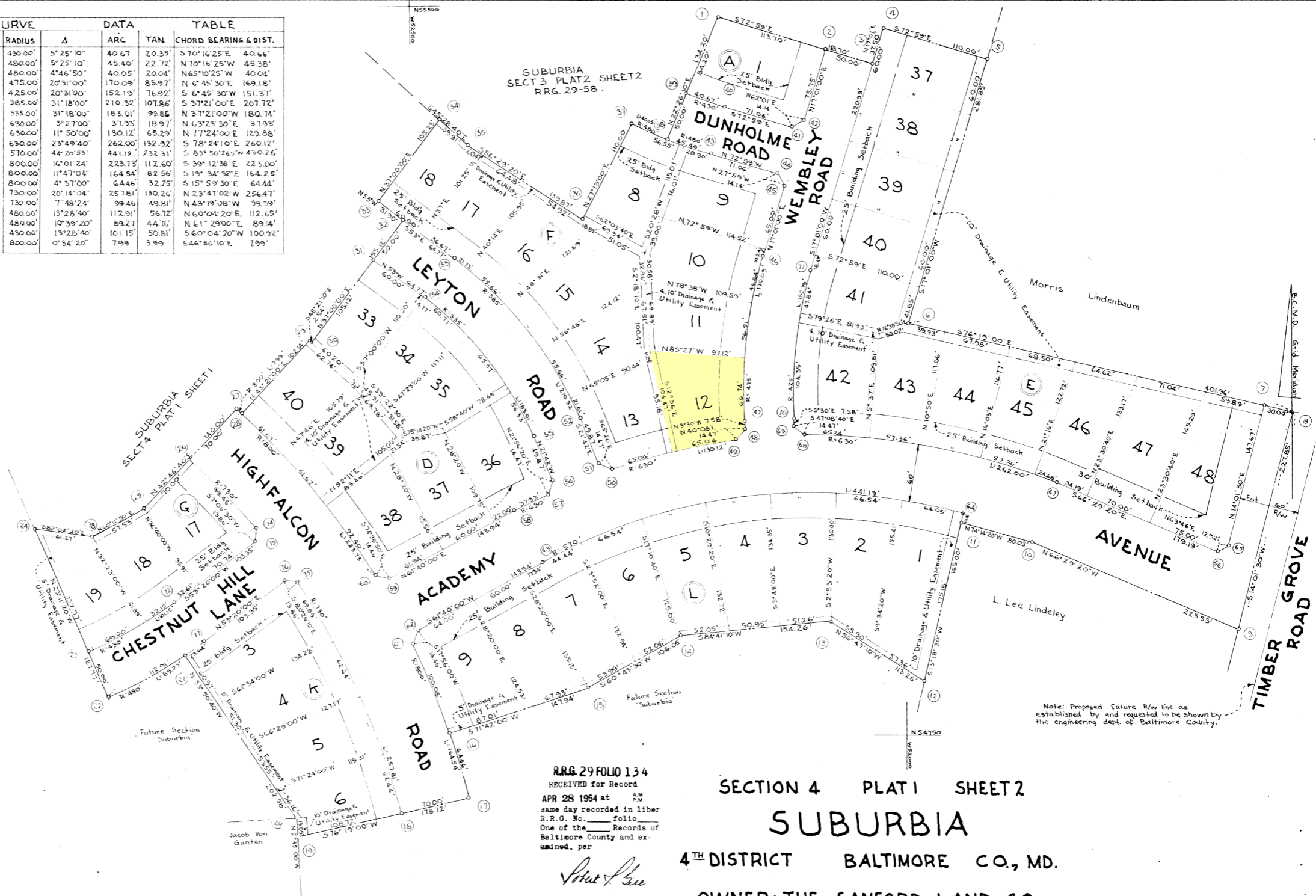




COORDINATES		
NO.	WEST	NORTH
1	52181.51	55486.99
2	52078.79	55453.12
3	52030.98	55438.49
4	52020.01	55474.34
5	51914.82	55442.15
6	51997.30	55172.64
7	51635.90	55084.65
8	51606.15	55077.56
9	51661.97	54856.50
10	51866.94	54945.67
11	51944.01	54967.43
12	51981.99	54806.86
13	52076.74	54868.89
14	52230.34	54854.60
15	52322.85	54802.75
16	52463.31	54756.29
17	52445.55	54694.34
18	52513.57	54677.78
19	52619.20	54652.07
20	52620.12	54671.13
21	52732.95	54899.98
22	52811.27	54796.82
23	52830.96	54842.78
24	52885.21	54949.42
25	52774.61	54989.53
26	52727.06	55040.91
27	52679.52	55092.29
28	52673.69	55086.84
29	52603.57	55161.11
30	52601.68	55159.42
31	52598.41	55243.38
32	52508.32	55283.31
33	52533.80	55302.51
34	52470.47	55386.55
35	52442.01	55358.57
36	52325.40	55281.34
37	52275.09	55379.14
38	52298.73	55362.35
39	52219.65	55408.56

COORDINATES		
NO.	WEST	NORTH
40	52181.40	55394.84
41	52113.45	55374.05
42	52100.96	55380.48
43	52196.03	54347.03
44	52128.08	54326.24
45	52121.44	54313.75
46	52143.46	55241.80
47	52163.37	55073.80
48	52162.91	55066.23
49	52172.24	55055.17
50	52298.99	55026.84
51	52312.14	55032.88
52	52330.58	55079.21
53	52456.60	55244.34
54	52486.69	55204.40
55	52377.04	55060.73
56	52358.60	55014.39
57	52364.00	55000.97
58	52397.92	54983.98
59	52524.61	54915.67
60	52538.55	54919.51
61	52500.99	54849.10
62	52496.14	54862.85
63	52369.44	54931.17
64	51941.66	54977.33
65	51671.69	54941.38
66	51683.28	54935.67
67	51847.59	55007.15
68	52102.40	55059.45
69	52113.70	55069.28
70	52113.47	55076.85
71	52095.65	55227.17
72	52743.48	54893.48
73	52660.59	54954.85
74	52658.88	54968.60
75	52617.07	54912.44
76	52630.74	54914.71
77	52113.64	54853.03
78	52824.53	54960.94

CURVE		DATA		TABLE		
FROM	TO	RADIUS	Δ	ARC	TAN	CHORD BEARING & DIST.
39	40	430.00'	5°25'10"	40.67	20.35'	S70°16'25"E 40.66'
45	38	480.00'	5°25'10"	45.40'	22.72'	N70°16'25"W 45.38'
38	37	480.00'	4°46'50"	40.05'	20.04'	N65°10'25"W 40.04'
47	46	475.00'	20°31'00"	170.09'	85.97'	N 4°45'30"E 169.18'
71	70	425.00'	20°31'00"	152.19'	76.92'	S 6°45'30"W 151.37'
53	52	385.00'	31°18'00"	210.32'	107.86'	S 37°21'00"E 207.72'
55	54	335.00'	31°18'00"	183.01'	99.85'	N 37°21'00"W 180.74'
58	57	630.00'	3°27'00"	37.93'	18.97'	N 63°25'30"E 37.93'
50	49	630.00'	11°50'00"	130.12'	65.29'	N 77°24'00"E 129.88'
68	67	630.00'	23°49'40"	262.00'	132.92'	S 78°24'10"E 260.12'
64	63	570.00'	44°20'53"	441.19'	232.31'	S 83°50'26"W 430.26'
28	60	800.00'	16°01'24"	223.73'	112.60'	S 39°12'38"E 223.00'
61	17	800.00'	11°47'04"	164.54'	82.56'	S 19°34'32"E 164.25'
16	17	800.00'	4°37'00"	64.46'	32.25'	S 15°59'30"E 64.44'
18	75	730.00'	20°14'04"	257.81'	130.26'	N 23°47'02"W 256.47'
74	26	730.00'	7°48'24"	99.46'	49.81'	N 43°19'08"W 99.39'
22	77	480.00'	13°28'40"	112.91'	56.72'	N 60°04'20"E 112.65'
22	21	480.00'	10°39'20"	89.27'	44.76'	N 61°29'00"E 89.14'
72	23	430.00'	13°28'40"	101.15'	50.81'	S 60°04'20"W 100.92'
27	28	800.00'	0°34'20"	7.99'	3.99'	S46°56'10"E 7.99'



Location Plan Scale: 1"=2000'

R.R.G. 29 FOLIO 134
 RECEIVED for Record
 APR 28 1964 at AM
 same day recorded in liber
 R.R.G. No. folio
 One of the Records of
 Baltimore County and ex-
 amined, per

Robert Lee
 Clerk

SECTION 4 PLAT 1 SHEET 2
SUBURBIA
 4TH DISTRICT BALTIMORE CO., MD.
 OWNER: THE SANFORD LAND CO.
 233 EQUITABLE BUILDING
 BALTIMORE 2, MARYLAND

Note: Proposed future R/W line as established by and requested to be shown by the engineering dept. of Baltimore County.

464042?
 @ 4/1/64
 R.M.C.
 5/31/64

APPROVED BY PLANNING BOARD OF BALTIMORE COUNTY
 4/1/64 *George S. Gaudin*
 DATE DIRECTOR, ACTING
 APPROVED *Howard D. ...*
 DATE COUNTY ROADS ENGINEER

APPROVED
 4/1/64 *William H. D. ...*
 DATE DEPUTY STATE & COUNTY HEALTH OFFICER
 The showing of streets and/or roads on this plat and their mention in deeds are for the purpose of description only and they are not intended to be dedicated to public use; the fee simple title to their lots is expressly reserved in the grantor of the deed to which this plat is attached, their heirs and assigns.

Coordinates and bearings shown on this plat are referred to the system of coordinates established in the Baltimore County Metropolitan District and are based on the following traverse stations:
 X-2103 W 52884.46 N 52421.94
 X-2104 W 52428.27 N 52489.49
 X-2106 W 51812.98 N 53010.70
 X-2107 W 51870.63 N 53401.44
 X-2110 W 51580.50 N 55166.52
 X-2111 W 51434.82 N 55869.05

David W. ...

The Sanford Land Company

H.F.S.
Red
 MAR. 26, 1964
 114 W 25TH ST.
 1ST FLOOR
 MAR. 26, 1964

BALTIMORE COUNTY CIRCUIT COURT (Subdivision Plats, BA) Plat Book RRG 29, p. 134, MSA 51236-4978. Date available 1964/04/28. Printed 11/03/2021.