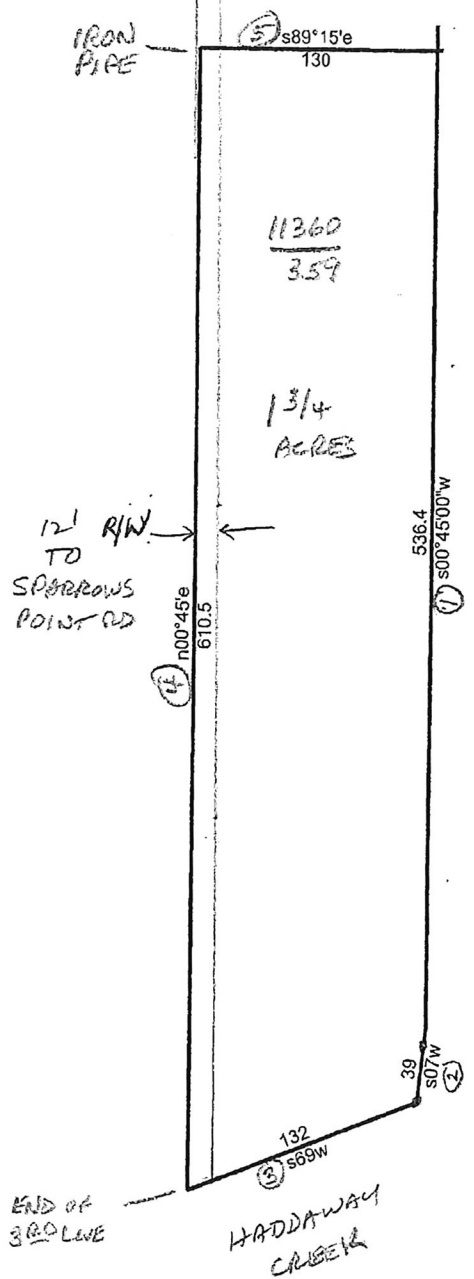


P.O.B. (11360/359)  
 POINT ON 2ND LINE IN A  
 DEED DATED 3/23/1916 REC.  
 WPC 460/159, FROM ANNA E.  
 SNYDER, ET AL, TO REGINA  
 DROZT, ET AL, @ DISTANCE  
 OF 109'9" FROM THE BEGINNING  
 OF SAID 2ND LINE



1ST LINE RUNS  
 PARALLEL WITH  
 3RD LINE OF SAID  
 WHOLE LOT

4/1/2022

Scale: 1 inch = 100 feet

File:

Tract 1: 1.7441 Acres (75975 Sq. Feet), Closure: n12.1847w 13.94 ft. (1/104), Perimeter=1448 ft.

- 01 s00.4500w 536.4
- 02 s07w 39
- 03 s69w 132
- 04 n00.45e 610.5
- 05 s89.15e 130