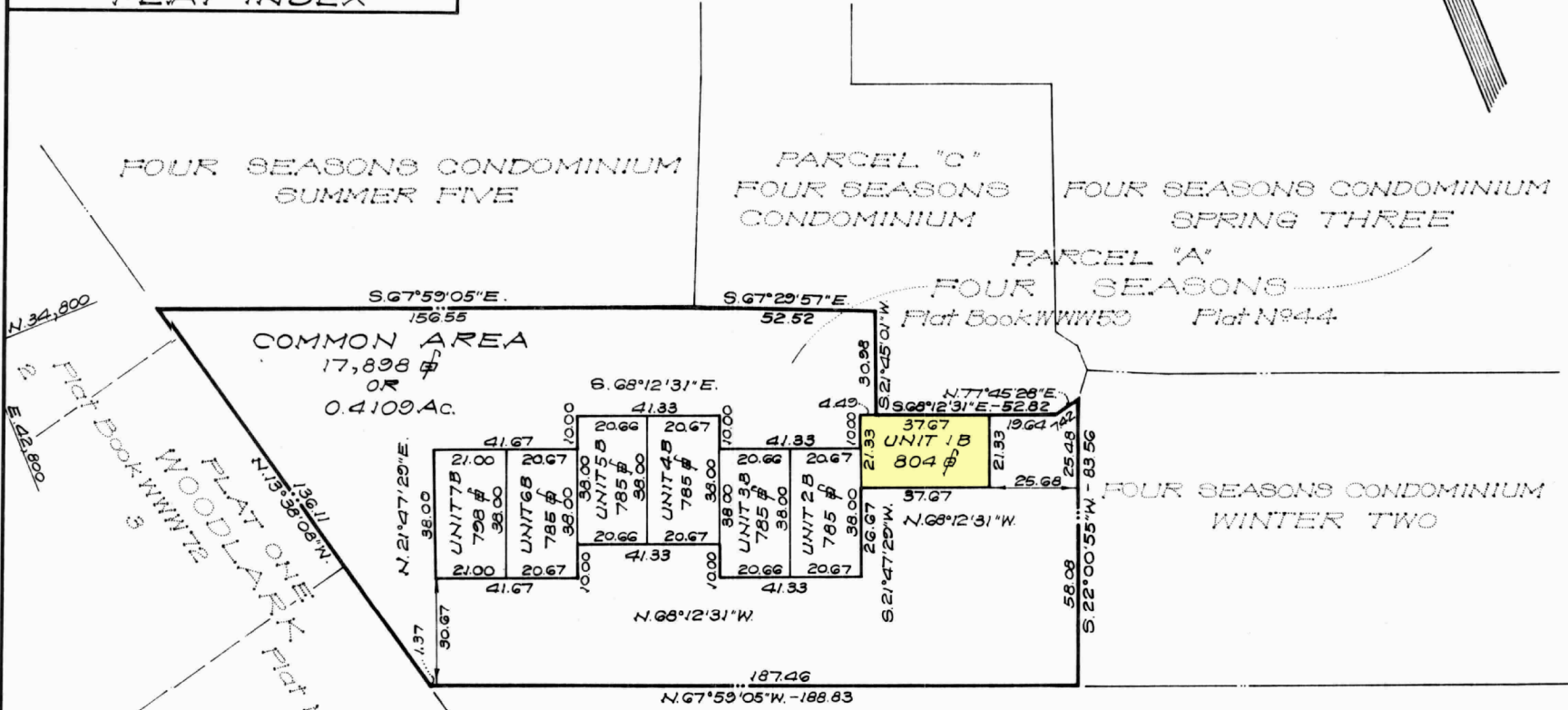
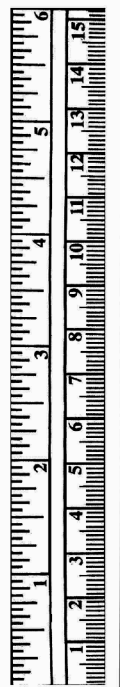


ENGINEER'S CERTIFICATE

I hereby certify that the plan shown hereon is correct;
 That it is an accurate plat prepared for the purpose
 of establishing Four Seasons Condominium - Spring Four
 for property consisting of part of Parcel 'A' as shown on
 a plat of subdivision entitled "Parcel A, Four Seasons",
 recorded among the Land Records of Prince Georges
 County, Maryland in Plat Book WWW59 at Plat No 44;

November 6, 1972

Gordon H. Ward
 GORDON H. WARD
 Registered Professional Engineer
 Maryland No. 6565



MASTER PLAT FOUR SEASONS CONDOMINIUM-SPRING FOUR

CONSISTING OF 1 PAGE OF MASTER PLAT AND
 4 PAGES OF ARCHITECTURAL PLANS
 BUILDINGS 1 THRU 7

BERWYN DISTRICT

PRINCE GEORGES COUNTY, MARYLAND
 SCALE: 1" = 30'

OCTOBER, 1972
APPROVED ASSESSMENT OFFICE

BEN DYER ASSOCIATES, INC.
 ENGINEERS - SURVEYORS
 RIVERDALE, MARYLAND

11-17-72 *Radwina T. Prefatti* 35