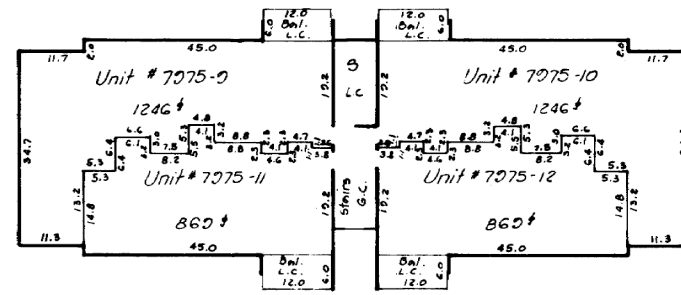


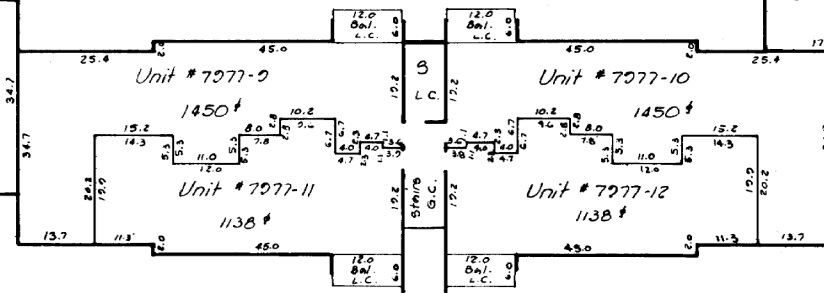


See notes on Sheet #2

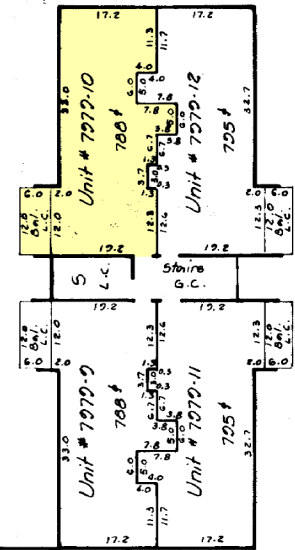


BUILDING # 7975
Upper Limits of each Unit at Elev. 118.92
Lower Limits of each Unit at Elev. 110.34

SECOND FLOOR



BUILDING # 7977
Upper Limits of each Unit at Elev. 116.17
Lower Limits of each Unit at Elev. 108.07



BUILDING # 7979
Upper Limits of each Unit at Elev. 114.33
Lower Limits of each Unit at Elev. 106.25

FILED
MAR 15 1982
NORMAN L. PITCHER
CLERK OF THE CIRCUIT COURT
Prince Georges County, Md.

BUILDINGS # 12, 13 & 14

BEDFORD TOWNE CONDOMINIUM

CHILLUM (17TH) DISTRICT

PRINCE GEORGE'S COUNTY, MARYLAND

Scale: 1" = 20'

March, 1982

DEPARTMENT OF
ASSESSMENTS
AND TAXATION
APPROVED
3/15/82
DATE 1982

GREENHORNE & O'MARA, INC.
Engineers Architects Planners Surveyors
6715 Kenilworth Avenue
Riverdale, Maryland 20737

Sheet 10 of 13
562507
E.B.B.
5501-P-00-01

RECORDED: 3-15-82
PLAT BOOK: NLP 113
PLAT NO: 10