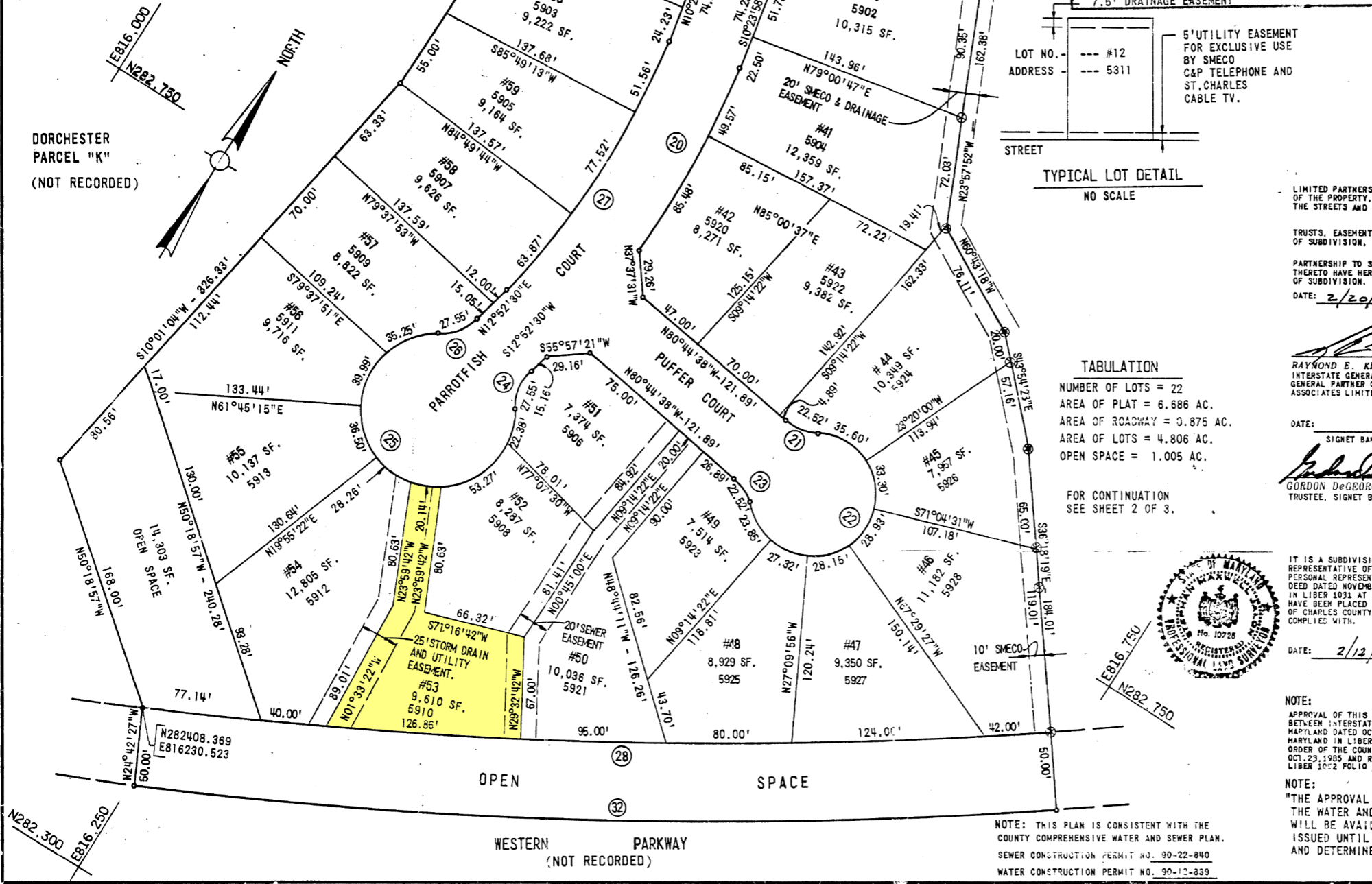


NO.	RADIUS	ARC	TAN	CHORD	CHORD BEARING	
19	630.00'	287.16'	26°06'56"	146.12'	284.68'	N79°05'36"E
20	525.00'	135.05'	14°44'18"	67.90'	134.67'	S03°01'49"E
21	35.00'	22.52'	36°52'12"	11.67'	22.14'	N80°49'16"E
22	40.00'	177.14'	-	-	-	-
23	35.00'	22.52'	36°52'12"	11.67'	22.14'	N62°18'32"W
24	35.00'	27.55'	45°05'57"	14.53'	26.84'	S09°40'28"E
25	50.00'	235.79'	-	-	-	-
26	35.00'	27.55'	45°05'57"	14.53'	26.84'	N35°25'28"E
27	475.00'	192.95'	23°16'28"	97.82'	191.63'	N01°14'16"E
28	2890.00'	585.00'	11°35'53"	298.58'	594.11'	S59°29'37"W
32	2940.00'	595.12'	11°35'53"	298.58'	594.11'	S59°29'37"W



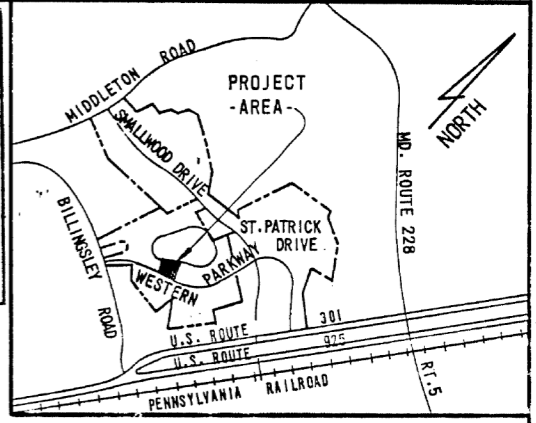
ALLOCATION(S) GRANTED

WATER: WS04R90WF (5,860 GPD) 2/26/90
REF. # DATE

SEWER: WS04R90MT (20,313 GPD) 2/26/90
REF. # DATE

EXPIRATION DATE: 9 91
MO. YR.

INFORMATION BY: Andrew Martin
7.5' DRAINAGE EASEMENT



-- VICINITY MAP --

SCALE: 1" = 1 MILE

OWNER'S DEDICATION

WE, ST. CHARLES ASSOCIATES LIMITED PARTNERSHIP, A MARYLAND LIMITED PARTNERSHIP BY: INTERSTATE GENERAL COMPANY L.P., IT'S GENERAL PARTNER, OWNERS OF THE PROPERTY, AND SIGNED BANK, HEREBY ADOPT THIS PLAN OF SUBDIVISION AND DEDICATE THE STREETS AND EASEMENTS TO PUBLIC USE.

THERE ARE NO SUITS, ACTIONS AT LAW, LEASES, LIENS, MORTGAGES OR TRUSTS, EASEMENTS, OR RIGHTS OF WAY, AFFECTING THE PROPERTY INCLUDED IN THIS PLAN OF SUBDIVISION, EXCEPT THE FOLLOWING:

AN INDEMNITY DEED OF TRUST FROM ST. CHARLES ASSOCIATES LIMITED PARTNERSHIP TO SIGNED BANK, TRUSTEE DATED JULY 24, 1989 AND ALL PARTIES IN INTEREST THEREOF HAVE HERETO AFFIXED THEIR SIGNATURES INDICATING THEIR ASSENT TO THIS PLAN OF SUBDIVISION.

DATE: 2/20/91

Raymond E. Keeney
RAYMOND E. KEENEY, VICE PRESIDENT
INTERSTATE GENERAL COMPANY, L.P.
GENERAL PARTNER OF ST. CHARLES ASSOCIATES LIMITED PARTNERSHIP

Charles E. Stuart
CHARLES E. STUART, PRESIDENT
INTERSTATE GENERAL COMPANY, L.P.
GENERAL PARTNER OF ST. CHARLES ASSOCIATES LIMITED PARTNERSHIP

TABULATION

NUMBER OF LOTS = 22
AREA OF PLAT = 6.686 AC.
AREA OF ROADWAY = 0.875 AC.
AREA OF LOTS = 4.806 AC.
OPEN SPACE = 1.005 AC.

FOR CONTINUATION SEE SHEET 2 OF 3.

DATE: 2/12/91

Gordon DeGeorge
GORDON DeGEORGE
TRUSTEE, SIGNED BANK

APPROVED FOR PUBLIC SEWER AND WATER WHEN AVAILABLE COUNTY 1991 AND UPON ISSUANCE OF PERMITS R04 T16-00 R02884000 R04 T16-00 R028840 C720 R04 T16-00



SURVEYOR'S CERTIFICATE

I HEREBY CERTIFY THAT THE PLAN SHOWN HEREON IS CORRECT, THAT IT IS A SUBDIVISION OF THE LANDS CONVEYED BY MILDRED R. BERRY, PERSONAL REPRESENTATIVE OF THE ESTATE OF GEORGE M. BERRY, JR. AND MARY A. CHAFFEE SURVIVING PERSONAL REPRESENTATIVE OF THE ESTATE OF DELIA E. BERRY TO ST. CHARLES ASSOCIATES BY DEED DATED NOVEMBER 2, 1984 AND RECORDED IN THE LAND RECORDS OF CHARLES COUNTY, MARYLAND IN LIBER 1031 AT FOLIO 189 AND STONES MARKED THUS: □ AND IRON PIPES MARKED THUS: ⊗ HAVE BEEN PLACED AS INDICATED TO THE APPROVED FINISHED GRADE AND THAT THE REQUIREMENTS OF CHARLES COUNTY SUBDIVISION REGULATION AND ANNOTATED CODE OF MARYLAND HAVE BEEN COMPLIED WITH.

DATE: 2/12/91

SIGNATURE: *Stephan Jalon*
STEPHAN JALON
REGISTERED LAND SURVEYOR
REG. NO. 10726

NOTE:

APPROVAL OF THIS PLAT IS SUBJECT TO THE TERMS AND CONDITIONS OF AN INDEMNITY BY AND BETWEEN INTERSTATE GENERAL COMPANY, L.P. AND THE COUNTY COMMISSIONERS OF CHARLES COUNTY, MARYLAND DATED OCT. 23, 1985 AND RECORDED AMONG THE LAND RECORDS OF CHARLES COUNTY, MARYLAND IN LIBER 1092 FOLIO 303 AND THE FINDINGS OF FACT AND THE CONCLUSIONS OF LAW AND ORDER OF THE COUNTY COMMISSIONERS OF CHARLES COUNTY, MARYLAND IN DOCKET 289 DATED OCT. 23, 1985 AND RECORDED AMONG THE LAND RECORDS OF CHARLES COUNTY MARYLAND IN LIBER 1092 FOLIO 306.

NOTE:

"THE APPROVAL OF THIS PLAT IS BASED ON A REASONABLE EXPECTATION THAT THE WATER AND SEWER SERVICE WHICH IS PLANNED FOR THE DEVELOPMENT WILL BE AVAILABLE WHEN NEEDED HOWEVER, BUILDING PERMITS MAY NOT BE ISSUED UNTIL THE PLANNED WATER AND SEWER FACILITIES ARE COMPLETED AND DETERMINED TO BE ADEQUATE TO SERVE THE PROPOSED DEVELOPMENT".

COORDINATES SHOWN ARE EXTENSIONS OF THE MARYLAND BUREAU OF CONTROL SURVEYS AND MAPS SYSTEM. BEARINGS REFER TO TRUE NORTH AND ARE BASED ON U.S.C. & G.S. GUTRIDGE (S.W.L. 1943).

APPROVED: *Shirley L. Cole* 7/5/91
CHARLES COUNTY PLANNING COMMISSION DATE

APPROVED: *Roy E. Blum* JUN 14 1991
DEPUTY COUNTY ADMINISTRATOR FOR PLANNING AND GROWTH MANAGEMENT DATE

APPROVED: *Marilyn S. Radler M.D.* 2/28/91
CHARLES COUNTY HEALTH OFFICER

OWNER
ST. CHARLES ASSOCIATES
222 SMALLWOOD VILLAGE CENTER
ST. CHARLES, MARYLAND - 20501

ENGINEER
WHITMAN, REQUARDT AND ASSOCIATES
3315 Saint Paul Street
Baltimore, Maryland 21218

T. J. SHAFER
REGISTERED PROFESSIONAL ENGINEER
NO. 8457

ST. CHARLES COMMUNITIES
DORCHESTER NEIGHBORHOOD
PARCEL "H"

ELECTION DISTRICT NO. 6 CHARLES COUNTY, MARYLAND

A DEVELOPMENT BY:
ST. CHARLES ASSOCIATES LIBER 42 PAGE 94
222 SMALLWOOD VILLAGE CENTER
ST. CHARLES, MARYLAND 20601

SCALE: 1" = 50' SHEET 3 OF 3 DATE: FEB. 7, 1991