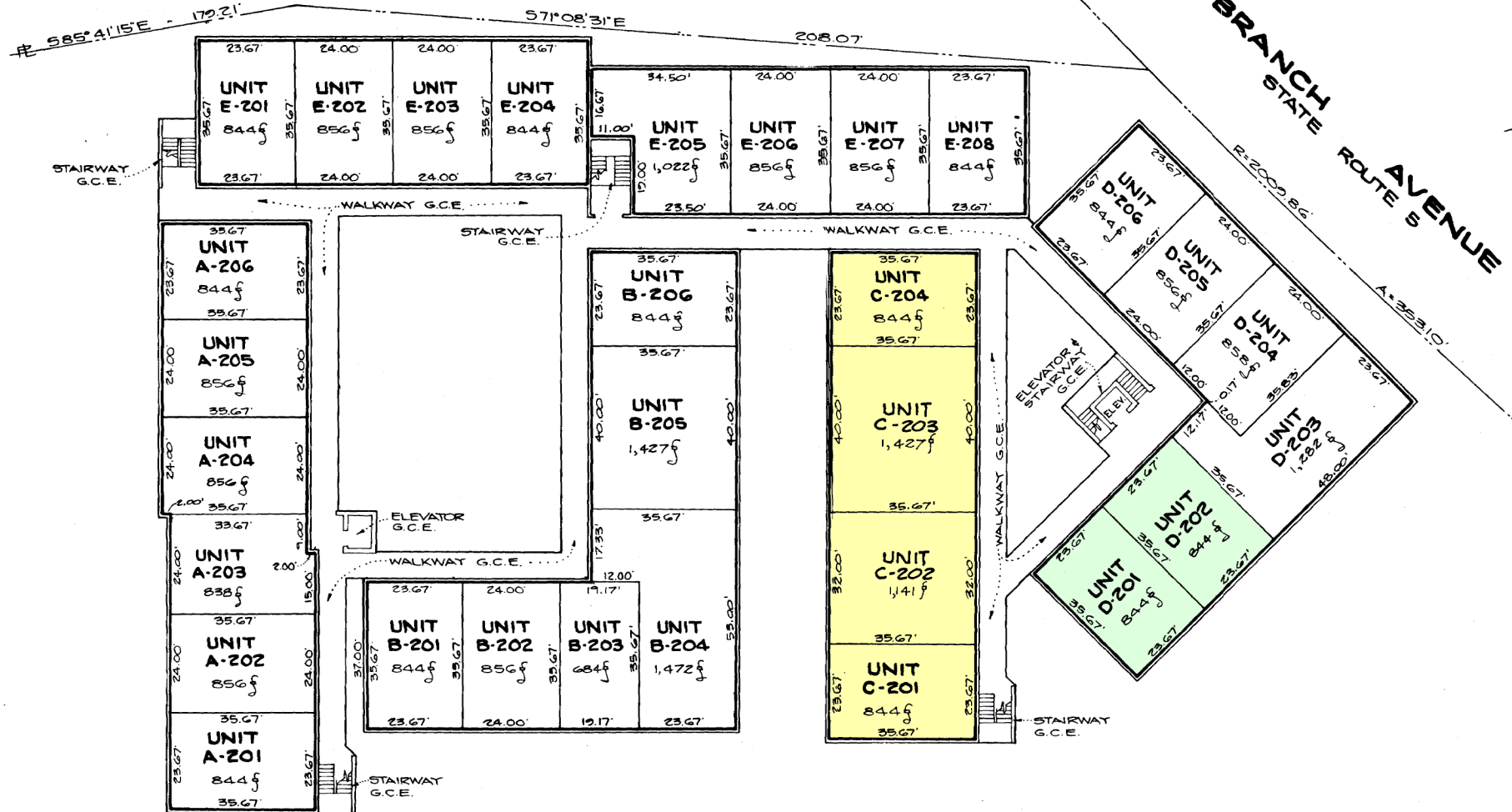
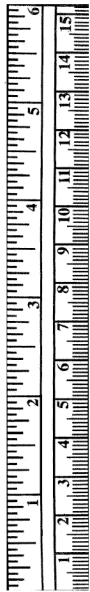


113-69



LEGEND

- (---) Limit of unit which is the centerline of an existing or future partition wall.
- (=) Heavy line denotes perimetrical boundary limit of unit adjacent to a wall which is a general common element; Limit of unit is unfinished interior face of wall.
- G.C.E. General Common Element.

**PLAT THREE OF FIVE
 PLAN OF UNITS - UPPER LEVEL
 PLAN OF CONDOMINIUM SUBDIVISION
 S.D.S. SQUARE CONDOMINIUM**

5th ELECTION DISTRICT
 PRINCE GEORGE'S COUNTY, MARYLAND
 FEBRUARY 1982 SCALE: 1" = 20'

FILED

JAN 9 1982
Swartz 8442
 Norman L. Pritchett
 Clerk of the Circuit Court
 Prince Georges County, Md.

RECORDED: 6-9-82
 PLAT BOOK: N.P. 113
 PLAT NO: 69

DEPARTMENT OF
 ASSESSMENTS
 AND TAXATION
 APPROVED
6/9/82
 DATE

BALDWIN & SAMPSON, INC.
 ENGINEERS - SURVEYORS
 7000 OLD BRANCH AVENUE
 CLINTON, MARYLAND 20735
 856-1800

SHEET 3 OF 5
 210 SE 6
 JOB NO. 1799