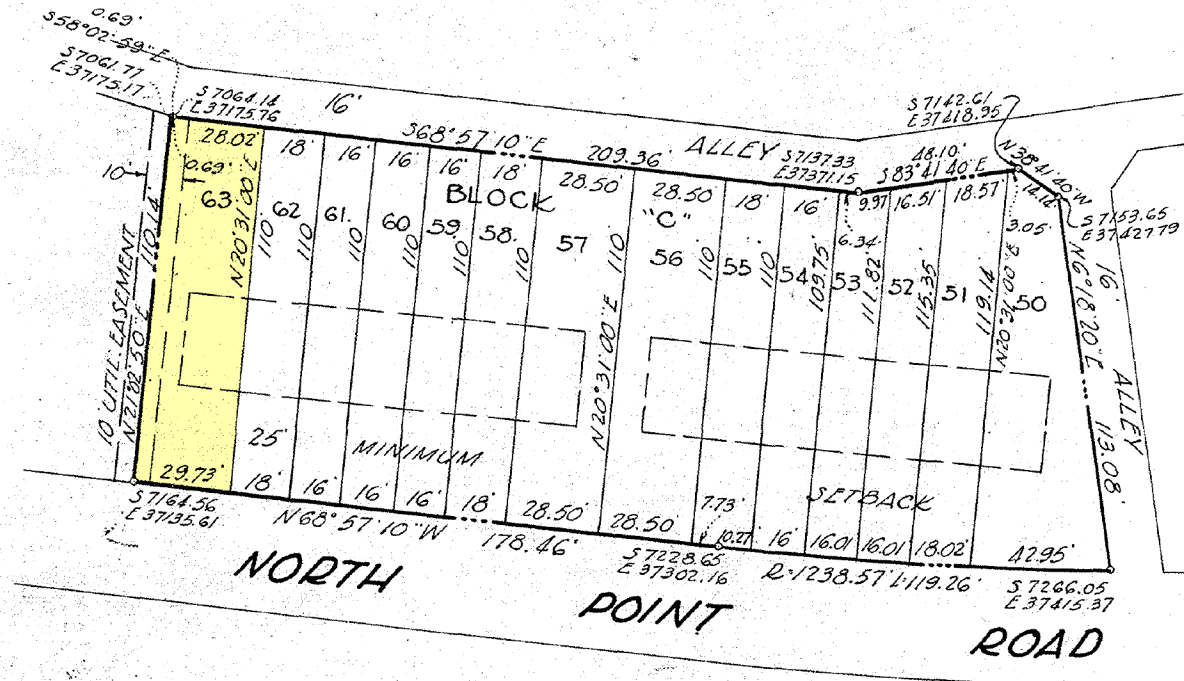


BALTIMORE COUNTY CIRCUIT COURT (Subdivision Plats, BA) Plat Book GLB 23, p. 41, MSA_S1236_1566. Date available 1956/10/19



23 **PLAT** **41**

RECEIVED for Record
OCT 23 1956 at A. M. / P. M.
 same day recorded in liber
 G.L.B. No. _____ folio _____
 One of the _____ Records of
 Baltimore County and ex-
 amined, per

George E. Cuyler
 Clerk

The streets and/or roads as shown hereon and the mention thereof in deeds are for the purpose of description only, and the same are not intended to be dedicated to public use; the fee simple title thereof is expressly reserved in the grantors of the deed to which this plat is attached, their heirs & assigns.

Coordinates shown on this plat are based on the Metropolitan District of Baltimore County Coordinate system.

The requirements of Sections 71 to 74 of Article 17 of the Annotated Code of Md, 1951 Edition (Title: Clerks of Court, Subtitle: Clerks of Circuit Courts) as far as they relate to the making of this plat and setting of markers have been complied with.

REVISED PLAT
 LOTS 50 TO 63 INCL. BLOCK "C"
CHARLESMONT III
 A DEVELOPMENT OF
THE NORTHWOOD BUILDING COMPANY
 10 EAST FAYETTE STREET
 BALTIMORE 2, MARYLAND
 12TH ELECTION DISTRICT
 Scale: 1"=50'
 BALTIMORE 2, MARYLAND
 October 12, 1956

OWNER
Charles Grace
 REG. PROF. ENGR. & LAND SURVEYOR LIC. 1216

Prepared by *John GSB*
 Date *10-19-56*

| | | | |
|--|---|---|--|
| APPROVED FOR DEPUTY STATE & COUNTY HEALTH OFFICER By <i>William N. P. White, M.D.</i> 10/19/56 HEALTH OFFICER DATE | HIGHWAYS DEPARTMENT OF BALTIMORE COUNTY APPROVED FOR STREET ALIGNMENT AND LOCATION By <i>Robert J. Cuyler</i> 10/22/56 ENGINEER DATE | APPROVED FOR BALTIMORE COUNTY PLANNING BOARD By <i>Margaret Dice</i> 10/18/56 DIRECTOR DATE | THOMPSON & GRACE ENGINEERS & SURVEYORS Fidelity Trust Bldg. TOWSON 4, MD. |
|--|---|---|--|

MSA 554 1236-1566

Maryland State Archives

