

REVISIONS

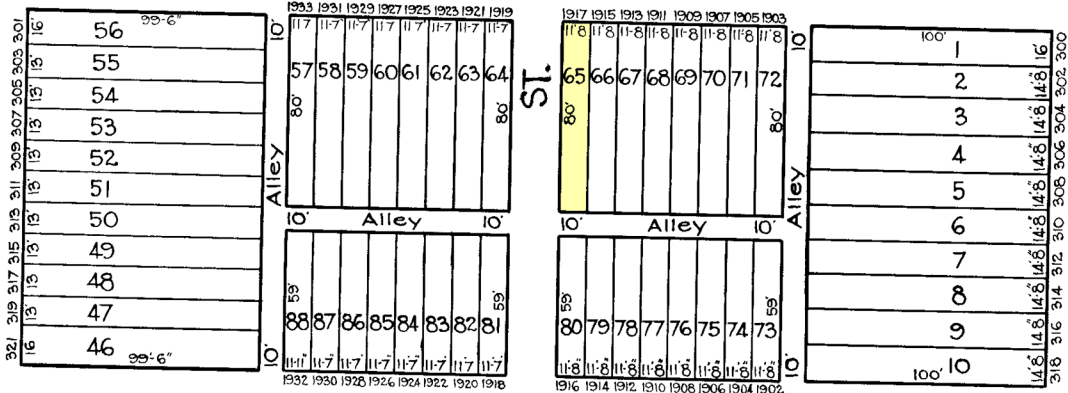
Lots 19 & 20 Cons'd Per App. 2772/73 C.Sh. 1263.  
 Lots 18 & 19/20 Cons'd Per App C Sh. 3859



MC HENRY

ST.

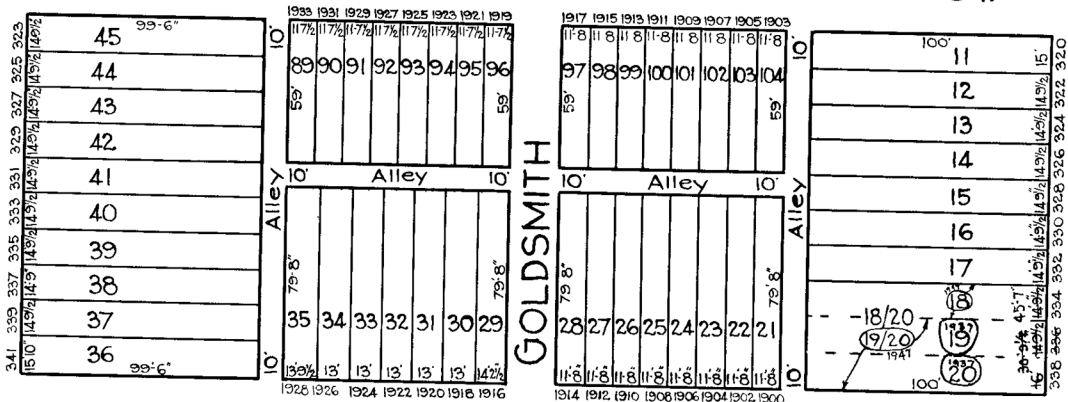
ST.



WILHELM

ST.

S. PAYSON



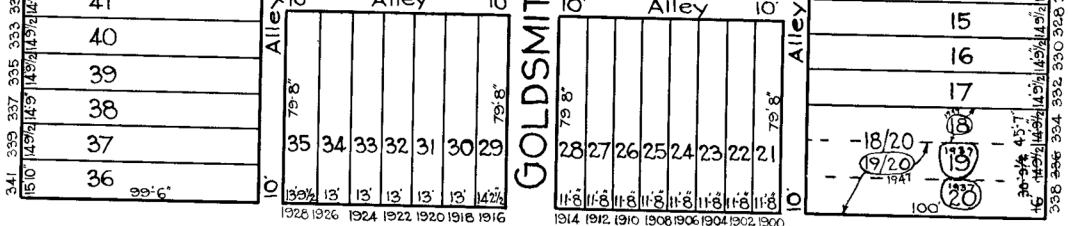
GOLDSMITH

ST.

RAMSAY

ST.

RAMSAY  
ASHTON



NOTICE

THIS IS A REAL PROPERTY PLAT AS PROVIDED FOR UNDER ARTICLE 76(d) OF THE CITY CHARTER IT IS COMPILED FROM TITLE AND OTHER SCUPCES AND IS NOT AN AUTHENTIC SURVY

CITY OF BALTIMORE  
 DEPARTMENT OF PUBLIC WORKS  
 BUREAU OF SURVEYS  
 PROPERTY LOCATION DIVISION  
 WARD 20 SECTION 12  
 BLOCK 274  
 SCALE 1 IN. = 50 FT. DATE Oct. 1929

TRACED BY R. LITZ  
 LETTERED BY J. S. J. Rokosky  
 CHECKED BY