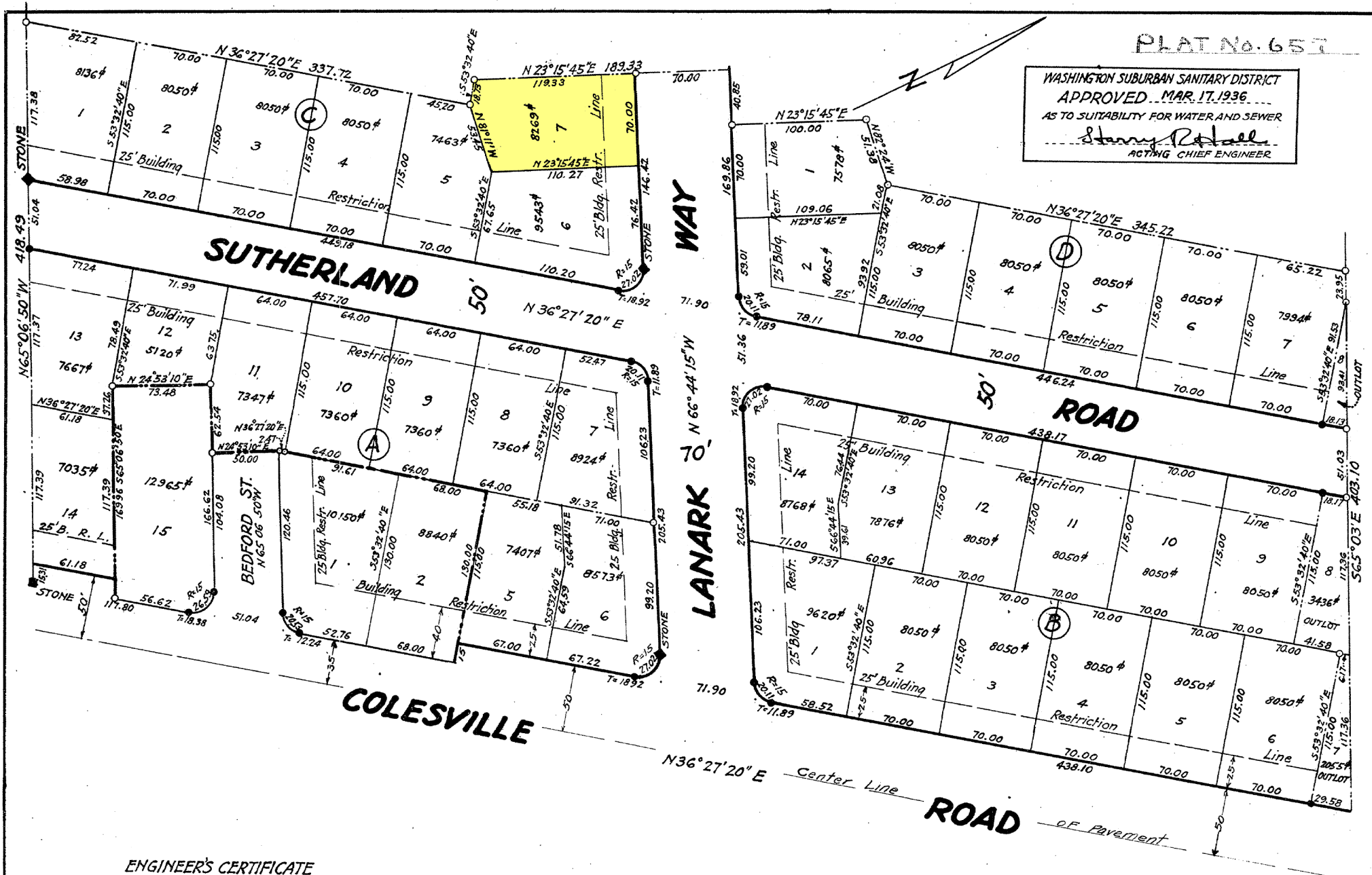


PLAT No. 657

WASHINGTON SUBURBAN SANITARY DISTRICT
 APPROVED MAR. 17, 1936
 AS TO SUITABILITY FOR WATER AND SEWER
Harry Robell
 ACTING CHIEF ENGINEER



ENGINEER'S CERTIFICATE

I hereby certify that the plat hereon delineated is correct;
 That it is a subdivision of part of the land conveyed by Hatton A Waters and Effie A Waters, his wife, to the Fairway Land Company by deed dated October 15, 1926 and recorded among the Land Records of Montgomery County, Maryland in Liber 414 at Folio 71;
 That lots 5 and 6 of Block A are a resubdivision of lots 3 and 4 of Block A, Section One, Fairway as per plat filed among the aforementioned Land Records in Plat Book 6, Plat No. 503;
 And that stones shown thus ■ and pipes shown thus ● have been placed as indicated.

Jan'y. 28, 1936

James M. Seybolt
 James M. Seybolt, Engineer

OWNER'S DEDICATION

We The Fairway Land Company, incorporated under the laws of the State of Maryland, owners of the property described in the Engineer's Certificate hereby adopt the plan of subdivision shown hereon;
 And establish the minimum building restriction lines as shown hereon;
 And dedicate the streets to public use.

FAIRWAY LAND COMPANY

January 30, 1936 *E. Brooke Lee*
 E. Brooke Lee, President

ATTEST:

John B. Sterling
 John B. Sterling, Secretary

FAIRWAY
SECTION TWO
MONTGOMERY COUNTY
MARYLAND

SCALE 1" = 60'

JANUARY 1936

JAMES M. SEYBOLT
 CIVIL ENGINEER
 SILVER SPRING, MD.

MARYLAND-NATIONAL CAPITAL PARK & PLANNING COMMISSION
 APPROVED JAN. 31, 1936
 DATE *Geo. N. Palmer* CHAIRMAN
Quincy C. Root SECRETARY
 M.-N.C.P. & P.C. RECORD FILE NO. 488

NOTE -
 Areas indicated as lots numbered 1, 2 and 15, Block A, are not included in this subdivision but are only shown for reference.

FILED
 MAR 28 1936