

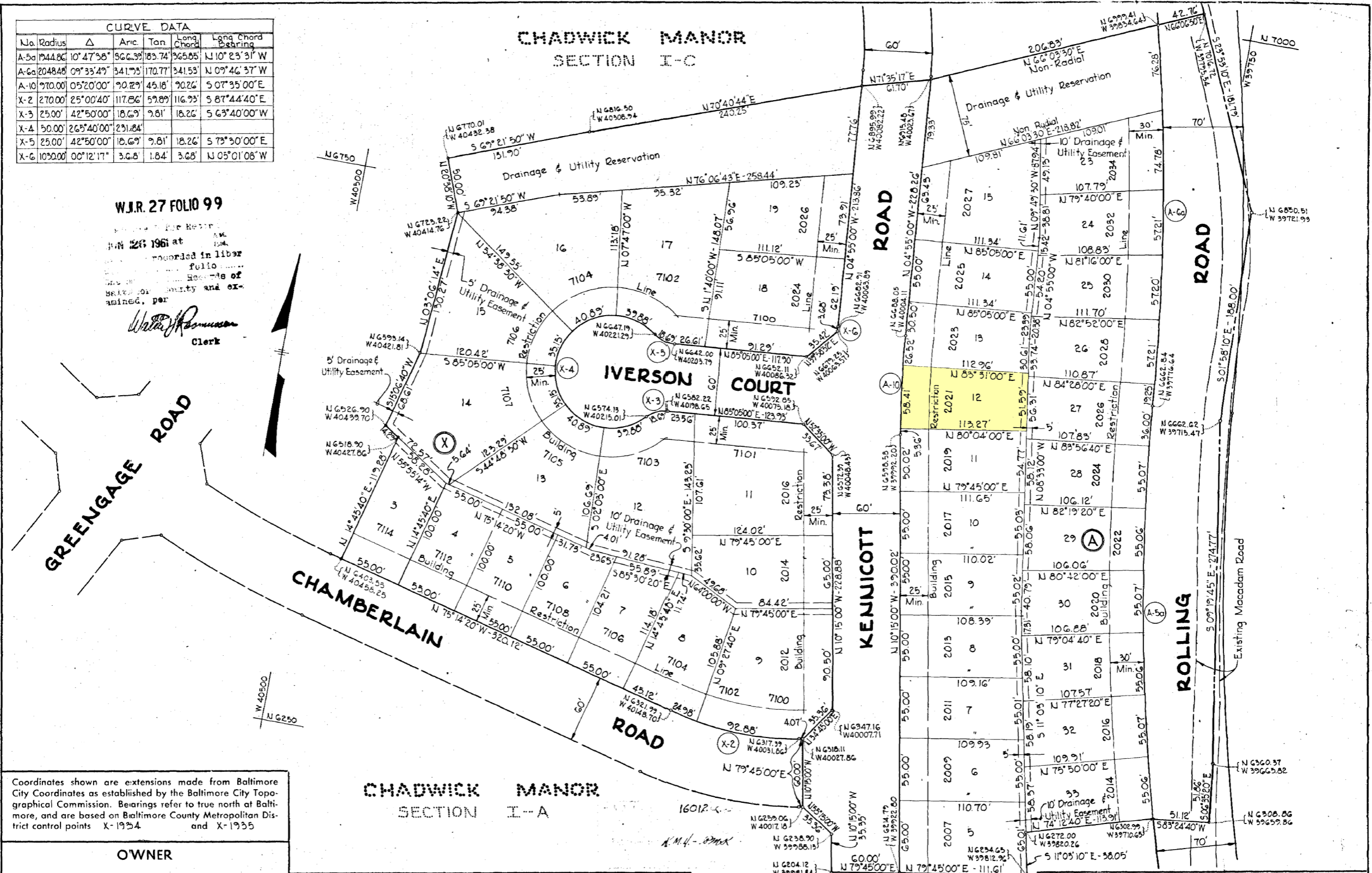


CURVE DATA						
No.	Radius	Δ	Arc	Tan	Long Chord	Long Chord Bearing
A-5a	144.86'	10° 47' 38"	366.39'	83.74'	365.65'	N 10° 23' 31" W
A-6a	2048.48'	0° 33' 49"	341.73'	170.77'	341.53'	N 0° 46' 37" W
A-10	970.00'	0° 52' 00"	90.29'	45.16'	90.26'	S 0° 35' 00" E
X-2	270.00'	25° 00' 40"	117.86'	59.89'	116.93'	S 87° 44' 40" E
X-3	25.00'	42° 50' 00"	18.69'	9.81'	18.26'	S 63° 40' 00" W
X-4	50.00'	26° 54' 00"	23.184'	9.81'	18.26'	S 73° 30' 00" E
X-5	25.00'	42° 50' 00"	18.69'	9.81'	18.26'	S 73° 30' 00" E
X-6	1030.00'	0° 12' 17"	3.68'	1.84'	3.68'	N 05° 01' 08" W

W.J.R. 27 FOLIO 99

Recorded in Liber
 No. 26 1961 at
 Baltimore County
 Clerk
Walter J. Rimmer

CHADWICK MANOR
SECTION I-C



Coordinates shown are extensions made from Baltimore City Coordinates as established by the Baltimore City Topographical Commission. Bearings refer to true north at Baltimore, and are based on Baltimore County Metropolitan District control points X-1934 and X-1935.

OWNER

Chadwick Development Co., Inc. at At
700 Fairmount Ave., Towson 4, Maryland

OWNER'S CERTIFICATE

Certification is hereby made that the requirements of the annotated code of Maryland, chapter 1016, Act of 1945, have been complied with on this plat.

Anthony A. Sanzo
Vice President

ENGINEERS

Whitman Requardt & Associates
2 West Preston Street
Baltimore 1, Maryland

Roy H. Ritter
ROY H. RITTER
Registered Land Surveyor
NO. 339

APPROVED

Baltimore County Health Department

By *William H. F. Warthen, M.D.*
Deputy State and County Health Officer

Date 4/23/61

The streets or roads as shown hereon are for the purpose of description only and the same are not intended to be dedicated to public use; the fee simple title to the beds thereof is especially reserved in the owner.

Approved Baltimore County Planning Board

By: _____ Date: _____
Director
Approved Baltimore County Highways Department

By: *J. Fred Coffett* Date: June 23, 1961

CHADWICK MANOR
SECTION I-B

ELECTION DISTRICT NO. 1
BALTIMORE COUNTY, MARYLAND

DATE: MAY 25, 1961

SCALE: 1"=50'