

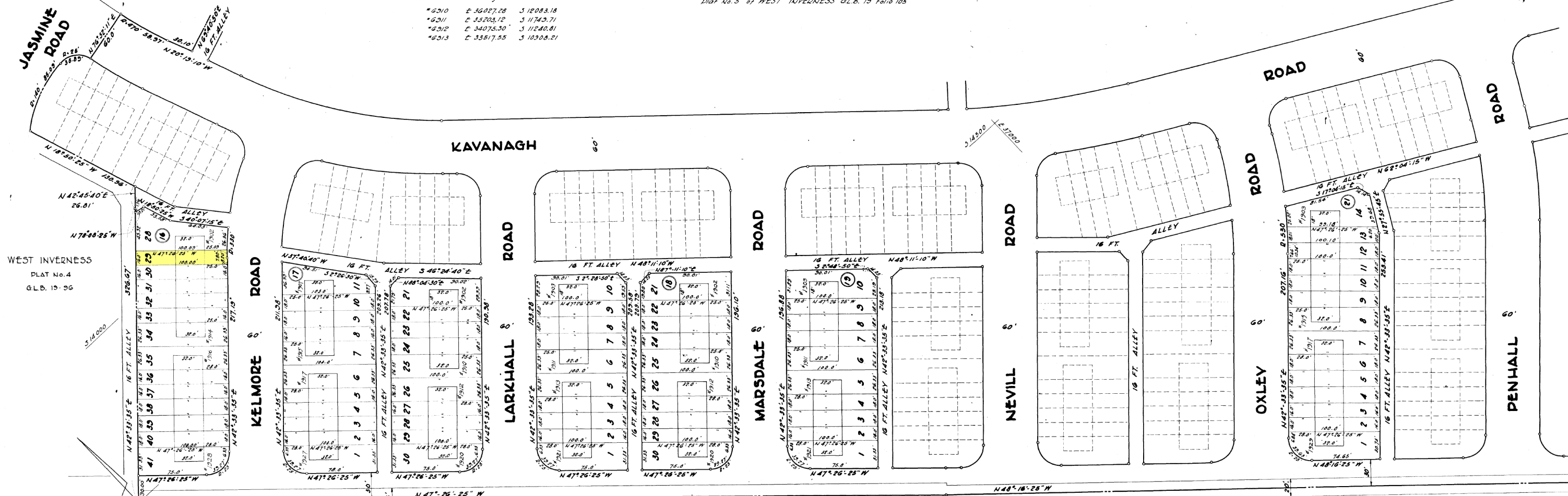
BALTIMORE COUNTY CIRCUIT COURT (Subdivision Plats, BA) Plat Book GLB 20, p. 61, MSA S1236, 1040. Date available 1954/08/11. Printed on 10/11/2011.



Coordinates and bearings shown on this plat are referred to the system of coordinates established in the Baltimore County Metropolitan District and are based on the following traverse stations:

*G310	E: 36027.28	S: 12083.18
*G311	E: 35203.12	S: 11745.71
*G312	E: 34075.30	S: 11240.81
*G313	E: 33517.55	S: 10908.21

NOTE: For all coordinates and curve data see Plat No. 5 of WEST INVERNESS G.L.B. 19 Folio 105



WEST INVERNESS
PLAT No. 4
G.L.B. 19-36

REVISED PLAT OF PART OF
PLAT No. 5
WEST INVERNESS
G.L.B. No. 19 FOLIO 105
12TH. DISTRICT BALTO. CO., MD.

VIRGINIA CORP.
514 ST. PAUL STREET
BALTIMORE 2, MD.

G.L.B. 20 Folio 61

FILED FOR RECORD WITH
FROM
TO
AUG 11 1954
TEST
Clerk.

APPROVED:
August 4, 1954
Deputy State & Co. Health Officer

APPROVED:
August 4, 1954
COUNTY ROADS ENGINEER

APPROVED:
August 3, 1954
DIRECTOR OF PLANNING COMMISSION

OWNER'S CERTIFICATE
Virginia Corp.
M. Edmund Colman, Jr.

ENGINEER'S CERTIFICATE
ALBERT E. POMMER
REGISTERED ENGINEER & LAND SURVEYOR

ALBERT E. POMMER
REGISTERED ENGINEER & LAND SURVEYOR
OFFICE: 433 PARK AVE. BALTO., MD.
SCALE: 1"=50' ISSUED: 7-30-54

