

ENGINEER'S CERTIFICATE

I HEREBY CERTIFY THAT THE PLAN SHOWN HEREON IS CORRECT, THAT IT IS A SUBDIVISION OF PART OF THE LANDS CONVEYED BY THE CORPORATION OF THE ROMAN CATHOLIC CLERGYMEN, A BODY CORPORATE UNDER AND BY VIRTUE OF THE LAWS OF THE STATE OF MARYLAND, TO LEVITT AND SONS, INCORPORATED, A BODY CORPORATE UNDER AND BY VIRTUE OF THE LAWS OF THE STATE OF NEW YORK, BY DEED DATED JULY 1, 1962 AND RECORDED IN LIBER 2736 AT FOLIO 521 OF THE LAND RECORDS OF PRINCE GEORGE'S COUNTY, MARYLAND.

THAT THE TOTAL AREA INCLUDED IN THIS PLAN OF SUBDIVISION IS 15.276306 ACRES.  
THAT IRON PIPES SHOWN THUS: —○— AND STONES SHOWN THUS: —●— ARE IN PLACE.

DATED: SEPT. 2, 1965  
*C.A. Monroe*  
C.A. MONROE, REGISTERED PROFESSIONAL ENGINEER AND LAND SURVEYOR, MARYLAND No. 3420

OWNER'S DEDICATION

WE LEVITT AND SONS INCORPORATED, A NEW YORK CORPORATION, BY RICHARD M. WASSERMAN, VICE-PRESIDENT AND FLORENCE L. GOODMAN, ASSISTANT SECRETARY OWNERS OF THE PROPERTY SHOWN HEREON AND DESCRIBED IN THE ENGINEER'S CERTIFICATE HEREBY ADOPT THIS PLAN OF SUBDIVISION, ESTABLISH THE MINIMUM BUILDING RESTRICTION LINES, DEDICATE THE STREETS TO PUBLIC USE, ESTABLISH FOR PUBLIC USE SUCH EASEMENTS AS MAY BE SHOWN FOR THE INSTALLATION, MAINTENANCE AND OPERATION OF STORM WATER SEWERS AND ESTABLISH THE 20' NON-ACCESS SCREEN PLANTING STRIP AS SHOWN.

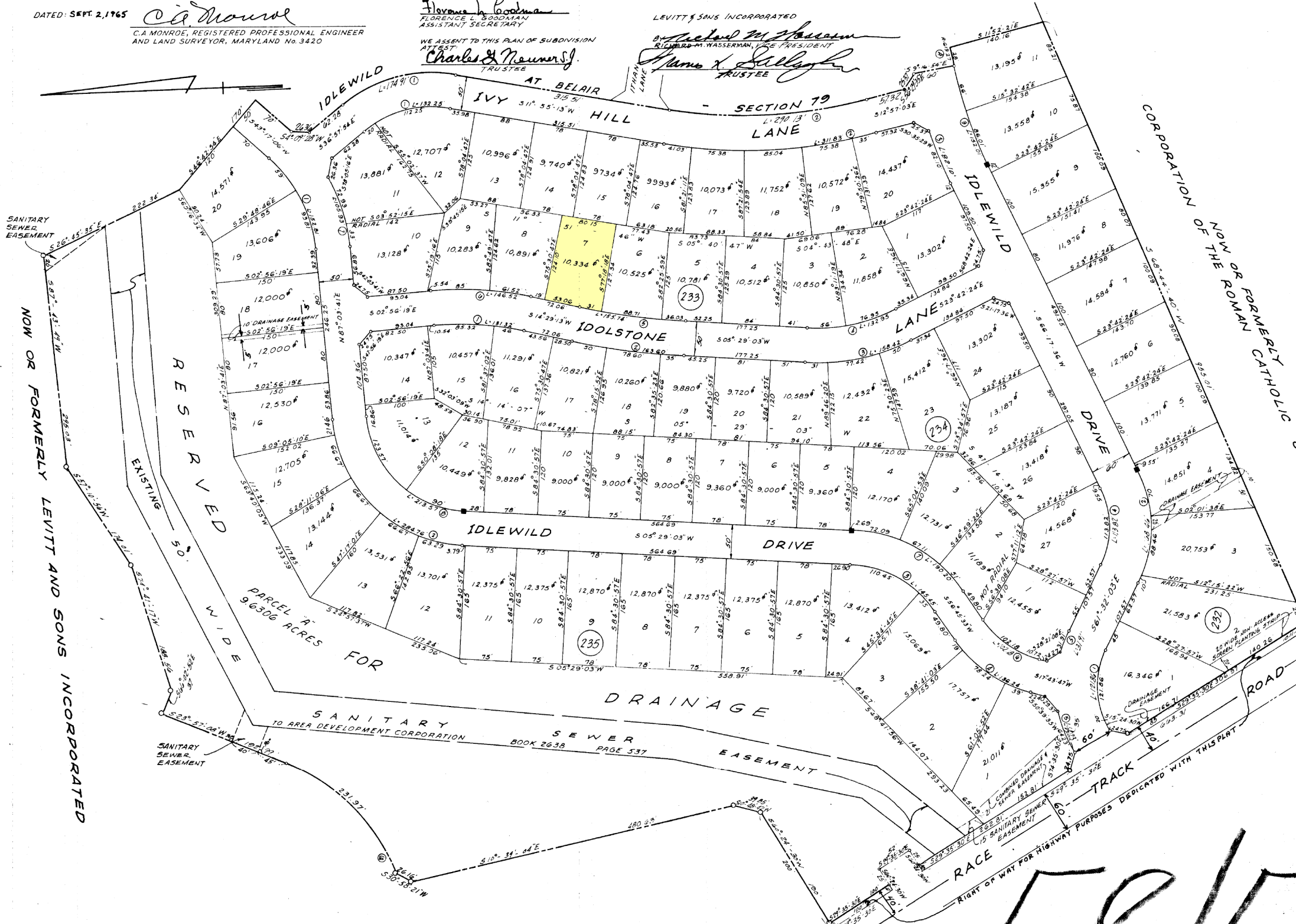
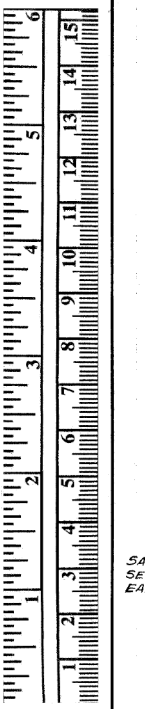
THE OWNERS DO NOT HEREBY DEDICATE THE WATER OR SANITARY SEWER MAINS OR APPURTENANCES THERETO OR EASEMENTS THEREFOR WHICH HAVE BEEN OR WHICH MAY HEREAFTER BE INSTALLED OR REQUIRED BY LEVITT AND SONS INCORPORATED, OR BY OTHER PARTIES, IN THE STREETS SHOWN ON THIS PLAN, TITLE TO SUCH MAINS, APPURTENANCES AND EASEMENTS, ALONG WITH THE RIGHT TO INSTALL, MAINTAIN AND OPERATE SUCH WATER AND SANITARY SEWER MAINS, IS EXPRESSLY AND COMPLETELY RESERVED TO LEVITT AND SONS INCORPORATED OR SUCH OTHER PARTIES, AND TO THEIR RESPECTIVE SUCCESSORS AND ASSIGNS. THE USE OF THE EASEMENT AREAS SHOWN HEREON SHALL BE SUBJECT TO THE PROVISIONS TO BE SET FORTH IN THE DECLARATION OF COVENANTS TO BE RECORDED AMONG THE LAND RECORDS OF PRINCE GEORGE'S COUNTY, MARYLAND BY THE OWNER OF THE PROPERTY SUBDIVIDED HEREBY.

THERE ARE NO MORTGAGES, LEASES, LIENS OR TRUSTS ON THE PROPERTY INCLUDED IN THIS PLAN OF SUBDIVISION, EXCEPT A CERTAIN DEED OF TRUST AND THE PARTIES IN INTEREST THERETO HAVE BELOW INDICATED THEIR ASSENT

DATED: September 2, 1965  
ATTEST  
*Florence L. Goodman*  
FLORENCE L. GOODMAN  
ASSISTANT SECRETARY  
*Richard M. Wasserman*  
RICHARD M. WASSERMAN,  
VICE-PRESIDENT  
*Charles & Neuman J.*  
TRUSTEE  
*Hanna & Gallagher*  
TRUSTEE  
LEVITT & SONS INCORPORATED

WE ASSENT TO THIS PLAN OF SUBDIVISION  
ATTEST  
*Charles & Neuman J.*  
TRUSTEE  
*Hanna & Gallagher*  
TRUSTEE

CURVE DATA table with columns: BLK, NO, RADUS, Δ, ARC, TAN, CHD, BEARING. Rows include Block-292, Block-293, Block-294, and Block-295.



MARYLAND NATIONAL CAPITAL PARK & PLANNING COMMISSION  
PRINCE GEORGE'S COUNTY PLANNING BOARD  
APPROVED: *William J. Stevens* *Carl E. Buschman*  
CHAIRMAN SECRETARY-TREASURER  
DATE: OCTOBER 13, 1965  
M.N.C.P. & P.C. RECORD FILE NO. 565205

NOTE:  
AVERAGE AREA OF LOTS INCLUDED  
IN THIS PLAT IS 12,335 SQUARE FEET

NOTE:  
SIDE LOT LINES ARE RADIAL TO CURVES  
UNLESS OTHERWISE NOTED  
—●— INDICATES SECTION LINE

R-80 ZONED 78 LOTS

58/5

SUBDIVISION PLAT  
IDLEWILD of BELAIR  
SECTION - 78  
SITUATED IN  
CITY of BOWIE  
PRINCE GEORGE'S COUNTY, MARYLAND  
OWNED BY

LEVITT and SONS, INCORPORATED  
SCALE: 1"=100'  
SURVEY & PLAT BY  
*C.A. Monroe*  
P.E. & L.S. No. 3420  
MARYLAND  
DRAWING No. M-3579