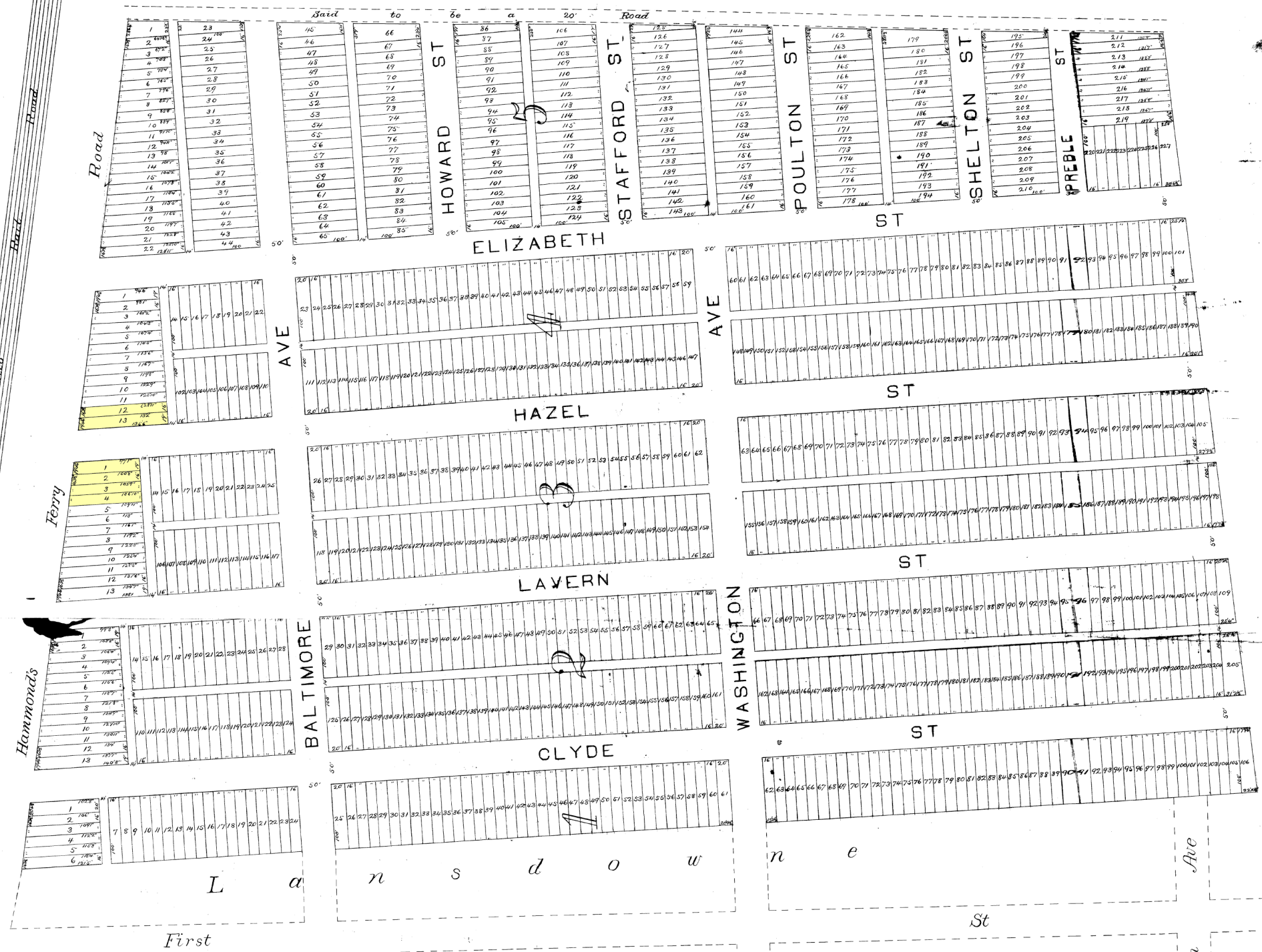


J O S H U A

1/144



I, R.T. Marin Surveyor, hereby certify, that I have subdivided for C.W. Hull, that part of Lot N^o 38 of the Baltimore Company's Land lying on the East side of the Baltimore and Ohio Rail Road; and that this Plat is a correct representation of the subdivision.

Scale 60 Feet to inch.
 R.T. Marin.
 Surveyor
 Baltimore, Md. 11/15/1889