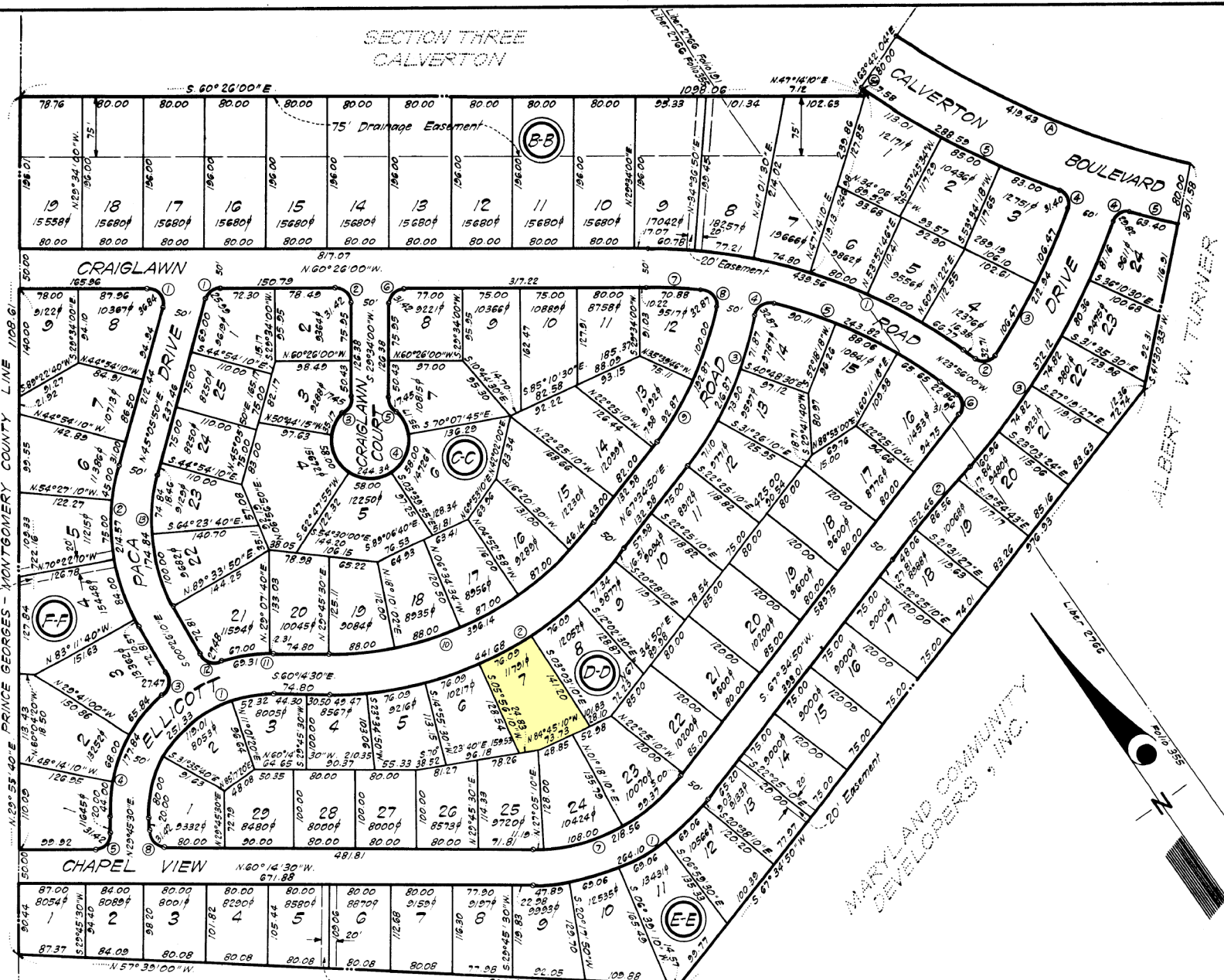


OWNERS' DEDICATION

We, Maryland Community Developers, Inc., a Maryland Corporation, by Albert W. Turner, President and Herndon G. Kilby, Secretary-Treasurer, owners of the property shown hereon and described in the Engineer's Certificate, hereby adopt this plan of subdivision, establish the minimum building restriction lines, dedicate the streets to public use and establish the easements as shown for the construction, maintenance and operation of storm drains and sanitary sewers

There are no suits of action, leases, liens or trusts on the property included in this plan of subdivision, except a certain mortgage and the parties in interest thereto have below indicated their assent.

March 8, 1963 MARYLAND COMMUNITY DEVELOPERS, INC.
Witness: J. W. G... Albert W. Turner, President
Witness: Herndon G. Kilby, Secy-Treas.
We hereby assent to this plan of subdivision.
Witness: Alfred H. Smith, Mary L. Smith, Mortgagees



CURVE DATA table with columns: BLK. NO., RADIUS, Δ, ARC, TAN, CHORD, BEARING. Contains data for blocks B-B, C-C, D-D, E-E, F-F.

UNIVERSITY OF MARYLAND ENGINEER'S CERTIFICATE
I hereby certify that the plan shown hereon is correct, that it is a subdivision of part of the lands conveyed by Albert W. Turner and Therese L. Turner, his wife, to Maryland Community Developers, Inc. by deed dated December 14, 1962 and recorded in Liber 2766 at Folio 191 and being also part of the lands conveyed by Maryland Community Developers, Inc. successor to Moern Construction Company, Inc. to Maryland Community Developers, Inc. by deed dated June 26, 1962 and recorded in Liber 2726 at Folio 355, all among the Land Records of Prince Georges County, Maryland; that iron pipes shown thus & are in place as indicated and that the total area included in this plan of subdivision is 33.1265 Acres

SECTION FOUR
BLOCKS "C-C", "D-D" AND "E-E" AND PART OF BLOCKS "B-B" AND "F-F" CALVERTON
PRINCE GEORGES COUNTY, MARYLAND
SCALE: 1"=100' MARCH, 1963

MARYLAND-NATIONAL CAPITAL PARK & PLANNING COMMISSION
PRINCE GEORGES COUNTY PLANNING BOARD
APPROVED: May 1, 1963 DATE
Chairman: William J. Stevens, Secretary-Treasurer: J. S. Kubler
MNCPPC RECORD FILE NO. 5-63084

A. James O'Mara
ENGINEER & SURVEYOR
6715 KENILWORTH AVE
RIVERDALE, MD

GREENHORNE & O'MARA ENGINEERS & SURVEYORS
6715 KENILWORTH AVE
RIVERDALE, MD

FILED

PRINCE GEORGES COUNTY CIRCUIT COURT (Plat Book) Plat Book WWW 47, p. 54, MSA_C2381_11572, Date available: Printed 04/27/2021.