

LEGEND

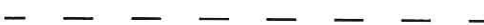
PROPERTY LINE



TREE LINE



USE I - TRIBUTARY



NONTIDAL WETLAND LIMITS

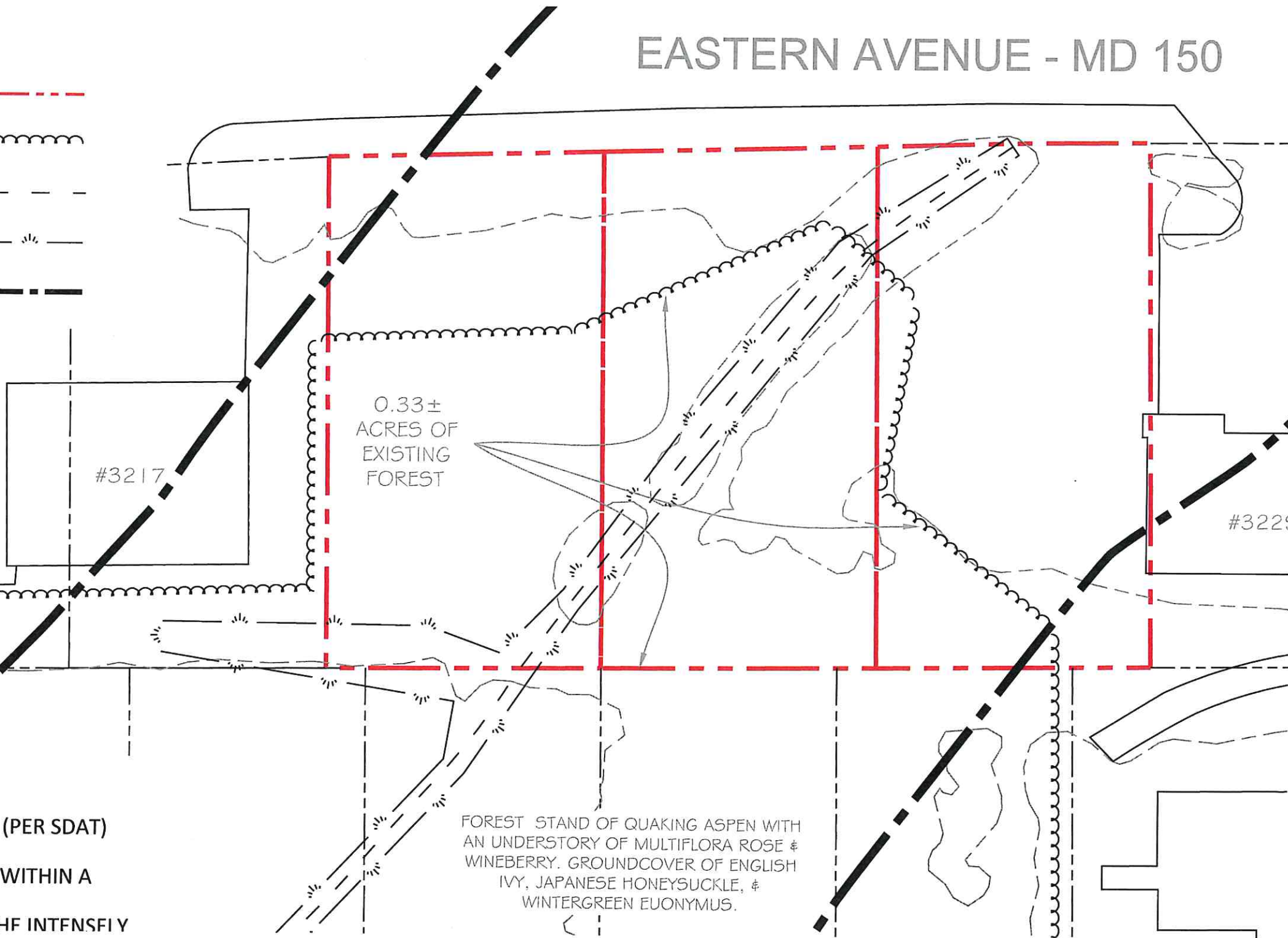


REQUIRED BUFFER



EASTERN AVENUE - MD 150

IDA CAN BE DEVELOPED WITH MEDIUM TO HIGH DENSITY HOUSING, COMMERCIAL, OR INDUSTRIAL USES. POLLUTANT LOADINGS MUST BE REDUCED BY 10% AND HABITAT PROTECTION AREAS MUST BE PROTECTED. A MINIMUM 100 FOOT BUFFER IS REQUIRED. THERE ARE NO CLEARING LIMITS AND NO LOT COVERAGE LIMITS WITHIN IDAS; HOWEVER MINIMIZE THE DESTRUCTION OF FOREST AND WOODLAND VEGETATION AND BENEFIT WATER QUALITY BY CONTROLLING SEDIMENT, REDUCING RUNOFF AND REMOVING NUTRIENTS ARE ENCOURAGED.



0.33±
ACRES OF
EXISTING
FOREST

FOREST STAND OF QUAKING ASPEN WITH AN UNDERSTORY OF MULTIFLORA ROSE & WINEBERRY. GROUNDCOVER OF ENGLISH IVY, JAPANESE HONEYSUCKLE, & WINTERGREEN EUONYMUS.

NOTES:

- 1. SITE AREA: 0.6444 AC.+ (PER SDAT)
- 2. ZONING: BL
- 3. THE SITE DOES NOT LIE WITHIN A KNOWN FLOOD ZONE
- 4. THE SITE LIES WITHIN THE INTENSIVELY