

CITY HOSPITALS

ALLEY

ST. 6'

365	363	361	359	357	355	353	351	349	347	11	95'	(90)	(39)	95'	42	166'	126'
										12		(91)	(60)		43	15'	15'
										13		(92)	(61)		44	15'	15'
										14		(93)	(62)		45	15'	15'
										15		(94)	(63)		46	15'	15'
										16		(95)	(64)		47	15'	15'
										17		(96)	(65)		48	15'	15'
										18		(97)	(66)		49	15'	15'
										19		(98)	(67)		50	15'	15'
										20	95'	(99)	(68)	95'	51	162'	126'

ST. 6'

REVISIONS

Lots 1/2-3/10 Per C.O.S. Eastern Av. C.Sh. 30285  
Lots 1/2 & 3/10 Per App.7056, C.Sh.3884

26-17-6332

CITY HOSPITALS

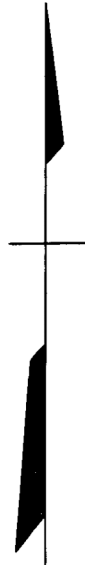
See 160-A-19B

BANK ST. 60'

441	439	437	435	433	431	429	427	425	423	421	419	417	415	413	411	409	407	405	403	401	21	95'	(100)	(69)	95'	52	156'	156'	
																						22		(101)	(70)		53	141'	141'
																						23		(102)	(71)		54	141'	141'
																						24		(103)	(72)		55	141'	141'
																						25		(104)	(73)		56	141'	141'
																						26		(105)	(74)		57	141'	141'
																						27		(106)	(75)		58	141'	141'
																						28		(107)	(76)		59	141'	141'
																						29		(108)	(77)		60	141'	141'
																						30		(109)	(78)		61	141'	141'
																						31		(110)	(79)		62	141'	141'
																						32		(111)	(80)		63	141'	141'
																						33		(112)	(81)		64	141'	141'
																						34		(113)	(82)		65	141'	141'
																						35		(114)	(83)		66	141'	141'
																						36		(115)	(84)		67	141'	141'
																						37		(116)	(85)		68	141'	141'
																						38		(117)	(86)		69	141'	141'
																						39		(118)	(87)		70	141'	141'
																						40		(119)	(88)		71	141'	141'
																						41	95'	(120)	(89)	95'	72	157'	141'

(Formerly 27th ST)

CORNWALL



NOTE :-  
BLOCK 26-17-19 FOR 1941.

6340 - 6355

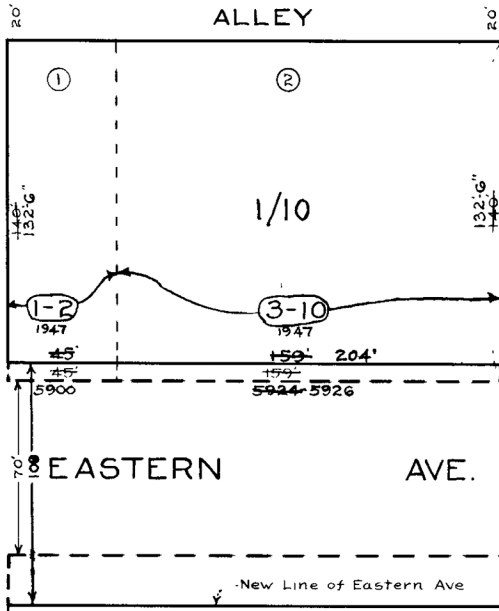
(No) Denotes Lots  
Blk. 31-37 For 1931

NOTICE

THIS IS A REAL PROPERTY PLAT AS PROVIDED FOR UNDER ARTICLE 76(M) OF THE CITY CHARTER. IT IS COMPILED FROM TITLE AND OTHER SOURCES AND IS NOT AN AUTHENTIC SURVEY.

26-17-6339

BONSAL



60'

60'

EASTERN AVE.

-New Line of Eastern Ave

TRACED BY *St. Bowersfeld*  
LETTERED BY *St. Bowersfeld*  
CHECKED BY .....

CITY OF BALTIMORE  
DEPARTMENT OF PUBLIC WORKS  
BUREAU OF PLANS & SURVEYS  
PROPERTY LOCATION DIVISION

WARD 26 SECTION 17  
BLOCK 6340

SCALE 1"=50 FT. DATE DEC. 1930