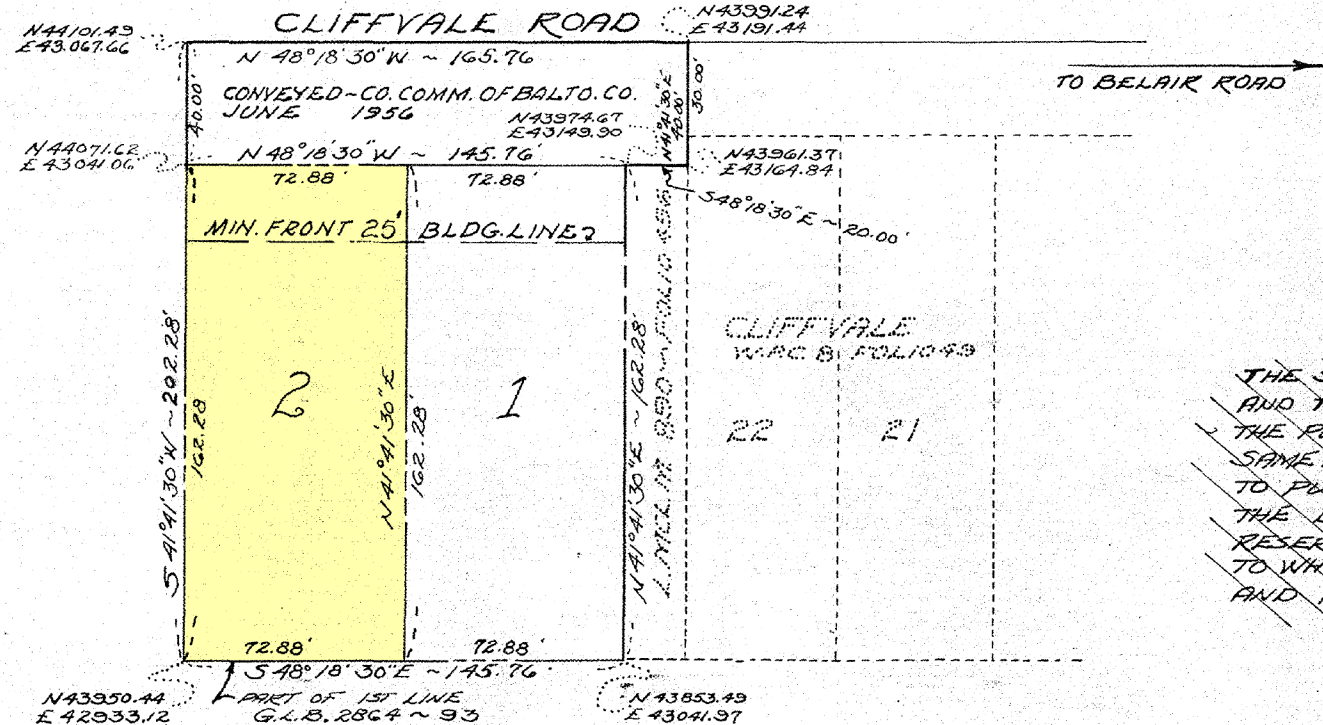
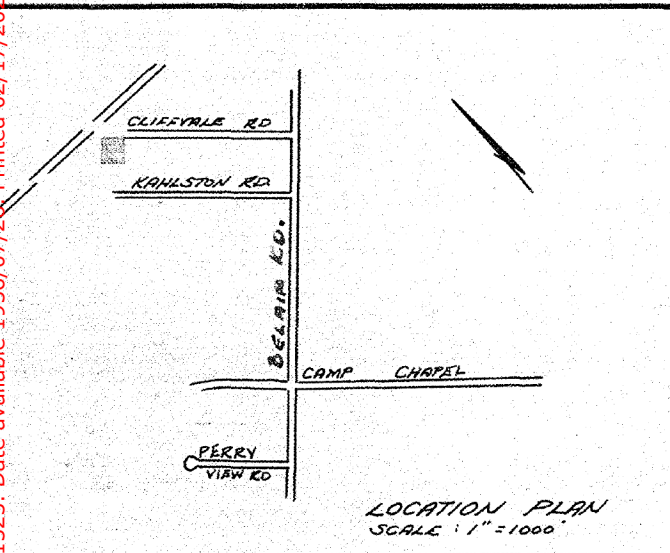


RECEIVED for Record
 JUL 26 1956 at A.M.
 same day recorded in liber P.M.
 G.L.B. No. folio
 One of the Records of
 Baltimore County and ex-
 amined, per

George E. Bynaly
 Clerk

CLIFFVALE ADDITION
 ELEVENTH ELECTION DISTRICT, BALTO. CO., MD.

SUBDIVIDED BY:
 SHADY GROVE CONSTRUCTION COMPANY INC.
 3145 EAST JOPPA ROAD
 BALTIMORE 34, MD.



~~THE STREETS AND/OR ROADS AS SHOWN HEREON AND THE MENTION THEREOF IN DEEDS ARE FOR THE PURPOSE OF DESCRIPTION ONLY AND THE SAME ARE NOT INTENDED TO BE DEDICATED TO PUBLIC USE. THE FEE SIMPLE TITLE TO THE LOTS THEREOF IS EXPRESSLY RESERVED IN THE GRANTORS OF THE DEED TO WHICH THIS PLAT IS ATTACHED, THEIR HEIRS AND ASSIGNS.~~

NOTE: THE COORDINATES SHOWN HEREON ARE BASED ON THE TRUE MERIDIAN AS ESTABLISHED BY THE BALTIMORE COUNTY METROPOLITAN DISTRICT AND ARE REFERRED TO "KAHLAND" ~ RECORDED IN PLAT BOOK J.V.B. 14 ~ 30

APPROVED: STATE HEALTH DEPARTMENT
William H. F. Warkentin, M.D. 7/23/56
 DEPUTY STATE & COUNTY HEALTH OFFICER DATE

APPROVED: AS TO ALIGNMENT & LOCATION OF STREETS
George E. Bynaly July 24, 1956
 ROADS ENGINEER DATE

APPROVED BY PLANNING BOARD OF BALTIMORE COUNTY
Robert M. Hill July 23, 1956
 DIRECTOR DATE

OWNER'S CERTIFICATE

I HEREBY CERTIFY THAT THE REQUIREMENTS SET FORTH IN SECTIONS 72A, 72B, 72C, ADDED TO ARTICLE 17 OF THE ANNOTATED CODE OF MARYLAND (1947 SUPPLEMENT) AS FAR AS THEY CONCERN THE MAKING OF THIS PLAT HAVE BEEN COMPLIED WITH

THE SHADY GROVE CONST. CO., INC. By *Robert M. Hill*
 OWNER OF THE LAND SHOWN HEREON

WILLIAM M. MAYNADIER
 REGISTERED ENGINEER & LAND SURVEYOR
 DUNCAN BLDG ~ TOWSON 4, MD.
 SCALE: 1"=50' ~ APRIL 14, 1956.
 REVISED JULY 30, 1956

P176275 23 70
 MSA SSA 1536-1503