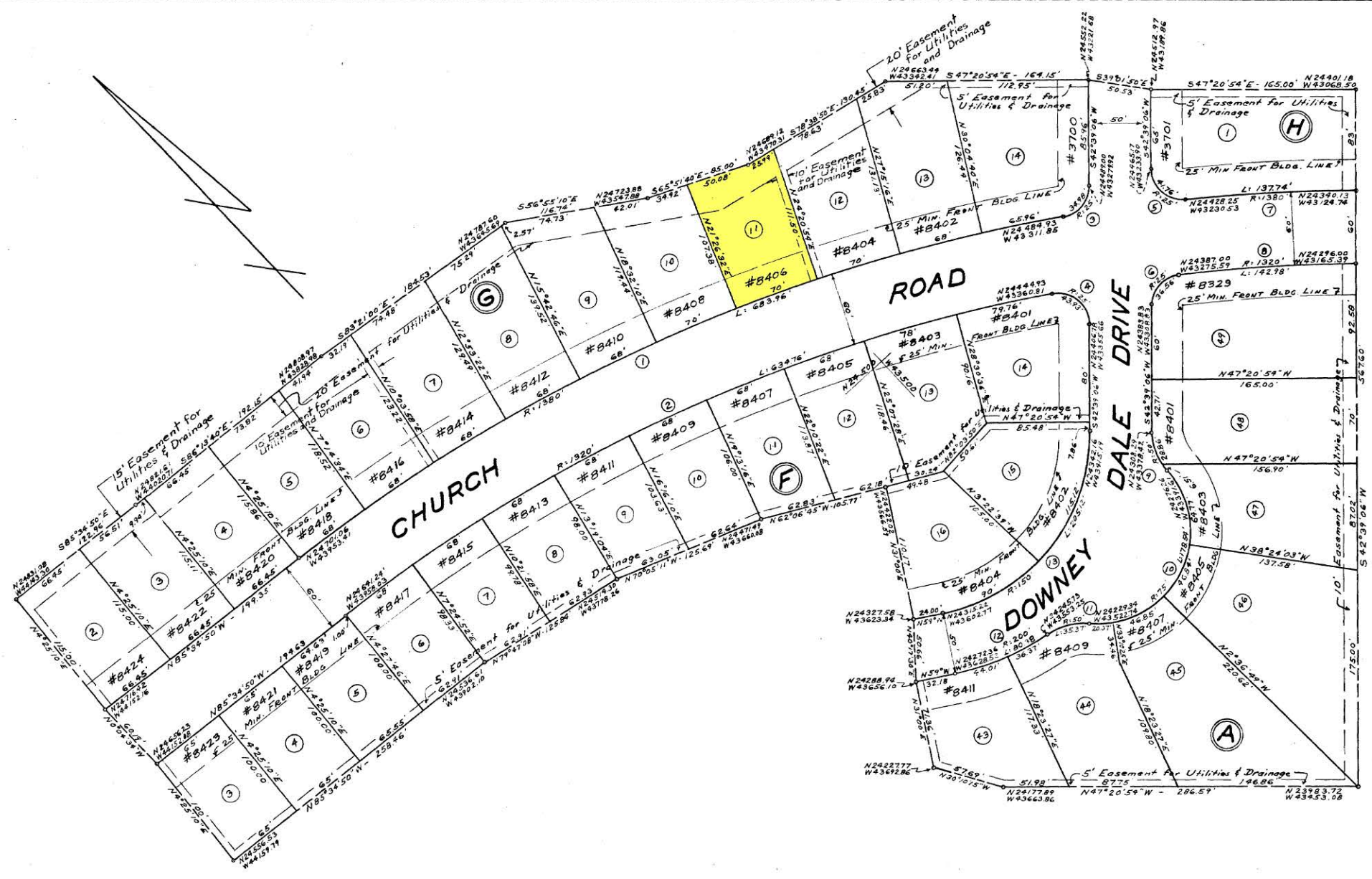




No	RADIUS	Δ	ARC	TAN	CORD	BEARING
1	1380'	28°23'49"	603.96	349.15	676.98	N71°22'55.5"W
2	1320'	27°33'08"	634.76	323.64	628.66	N71°08'16"N
3	2.5'	90°09'53"	34.98	2.04	32.19	S82°44'02.5"W
4	2.5'	100°40'48"	43.93	30.16	38.49	N7°41'18"W
5	2.5'	95°43'07"	41.72	27.63	37.07	N5°42'27.5"W
6	2.5'	83°47'38"	36.56	22.43	33.39	S94°32'55"W
7	1380'	5°43'07"	137.74	68.93	137.68	N50°12'27.5"W
8	1320'	6°12'22"	142.98	71.56	142.91	N50°27'05"W
9	50'	40°32'09"	35.37	18.46	34.64	S22°23'04.5"W
10	7.5'	136°23'34"	178.54	187.48	159.27	S70°18'44"W
11	50'	40°32'09"	35.37	18.46	34.64	N41°45'33.5"W
12	200'	23°01'38"	80.38	40.74	79.84	N70°30'49"W
13	150'	78°20'54"	205.12	122.22	189.50	S81°49'33"W



NOTES

"The streets and/or roads as shown hereon and the mention thereof in deeds are for the purpose of description only and the same are not intended to be dedicated to public use; the fee simple title thereof is expressly reserved in the grantors of the deed to which this plat is attached, their heirs and assigns."

Coordinates shown on this plat are based on Metropolitan District of Baltimore County coordinate system.

The requirements of Sections 72A, 72B and of Article 17 of the Annotated Code of Md., 1939 Edition (Title: Clerks of Court, Subtitle: (Clerks of Circuit Courts)) as far as they relate to the making of this plat and setting the markers have been complied with.

Alvin K. Kempf
 PRES. COURTLEIGH HOMES INC.

W.H. Primrose
 REGISTERED LAND SURVEYOR #1231

GLB 24 FOLIO 116

RECEIVED for Record
 FEB 4 1958 at A.M.
 same day recorded in liber
 C. L. B. No. folio
 One of the Records of
 Baltimore County and ex-
 amined, per

George E. Ryan
 Clerk

PLAT No SIX OF
COURTLEIGH

DEVELOPMENT OF
 COURTLEIGH HOMES, INC.
 302 PARK AVE.
 BALTIMORE 1, MARYLAND
 ELECTION DISTRICT No 2
 BALTIMORE COUNTY, MARYLAND
 SCALE = 1" = 50'
 JANUARY 23, 1957

NOTE:
 Coordinates Based On Baltimore County
 Metropolitan District Traverse Stations.
 N^o X-1363 N 25500.09 W 42390.64
 N^o X-1304 N 25561.58 W 42063.02

W.H. PRIMROSE & ASSOCIATES 21 W. PENNSYLVANIA AVE. TOWSON 4, MD.	HIGHWAYS DEPARTMENT OF BALTIMORE COUNTY APPROVED FOR STREET ALIGNMENT AND LOCATION BY <i>Robert G. Lough</i> 1/23/58 ROAD ENGINEER DATE	APPROVED FOR BALTIMORE COUNTY PLANNING BOARD BY <i>William H. F. Warten</i> 1/23/58 DIRECTOR DATE	APPROVED FOR BALTIMORE COUNTY HEALTH DEPARTMENT BY <i>William H. F. Warten</i> January 30, 1957 DEPUTY STATE & COUNTY HEALTH OFFICER DATE
------------------------------------------------------------------------	--------------------------------------------------------------------------------------------------------------------------------------------------	---------------------------------------------------------------------------------------------------------	-------------------------------------------------------------------------------------------------------------------------------------------------

BALTIMORE COUNTY CIRCUIT COURT (Subdivision Plats, BA) Plat Book GLB 24, p. 116, MSA_51236_1892, Date available 1958/02/04. Printed 05/24/2017.