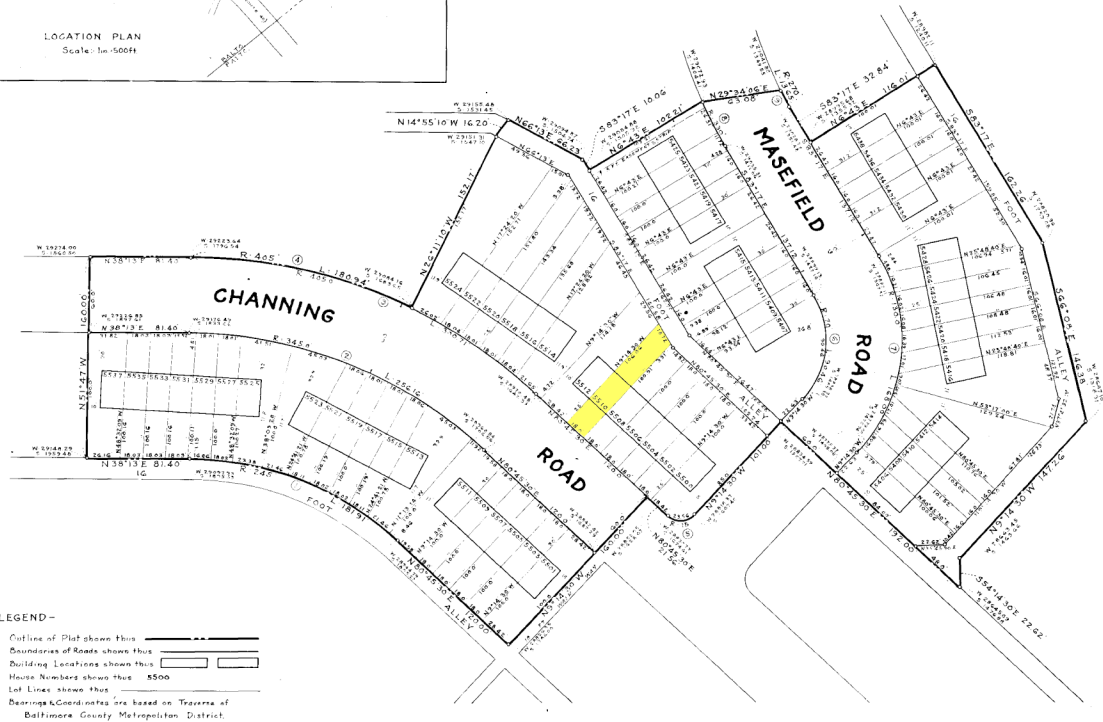
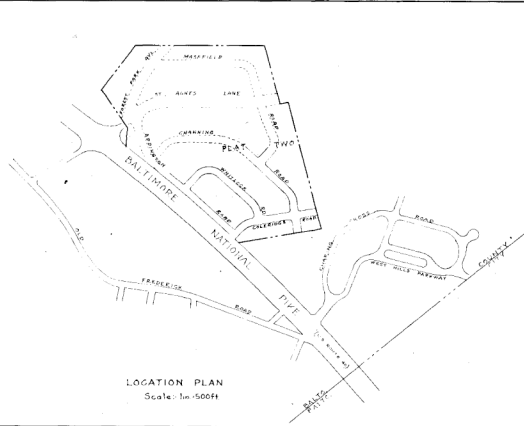


CURVE DATA						
No.	Radius	Δ	Arc	Tan	Chord	L.C.B.
1	245.0	48°32'31"	161.91	16.18	177.76	N55°25'11"E
2	345.0	48°32'31"	232.16	23.21	255.31	N55°25'11"E
3	405.0	48°32'31"	260.71	26.07	293.82	N55°25'11"E
4	405.0	54°58'32"	261.94	26.21	294.44	N41°56'52"E
5	15.0	94°06'00"	23.56	15.00	21.21	N55°46'51"E
6	70.0	164°02'30"	70.42	52.79	82.21	S42°15'48"E
7	117.0	164°02'30"	108.66	38.66	116.41	S42°15'48"E
8	237.0	57°34'14"	38.21	19.14	38.11	S73°07'03"E
9	237.0	57°34'14"	38.21	19.14	38.11	S73°07'03"E



- LEGEND-**
- Outline of Plat shown thus
 - Boundaries of Roads shown thus
 - Building Locations shown thus
 - House Numbers shown thus
 - Lot Lines shown thus
 - Bearings & Distances are based on Traverses of Baltimore County Metropolitan District

NOTE:
Roads, Streets, and alleys are shown on this plat for the purpose of description only and not for the purpose of dedication.

OWNERS CERTIFICATE:
Certification is hereby made that all the requirements of the Annotated Code of Maryland Chapter 1016, Act of 1948 have been complied with on this plat.

PRESIDENT

CERTIFICATION:
Certification is hereby made that this plat represents a survey by G.W. Stephens Jr and Associates and that it meets the requirements of Section 22-B Article 17 of Annotated Code of Maryland 1947 Supplement.

REG. NO. 127

APPROVED AS TO ALIGNMENT AND LOCATION OF STREETS:

ROAD ENGINEER OF BALTO. CO., MD.

APPROVED BY BALTIMORE COUNTY PLANNING COMMISSION:

DIRECTOR

**PLAT TWO
WEST EDMONDALE**

BALTIMORE COUNTY FIRST ELECTION DISTRICT
SCALE: 1 IN. = 50 FT. SEPTEMBER 1951

**THE EDMONDALE BUILDING CO. DEVELOPERS
5 N. GUILFORD AVE. BALTIMORE, MD.**