

REVISIONS

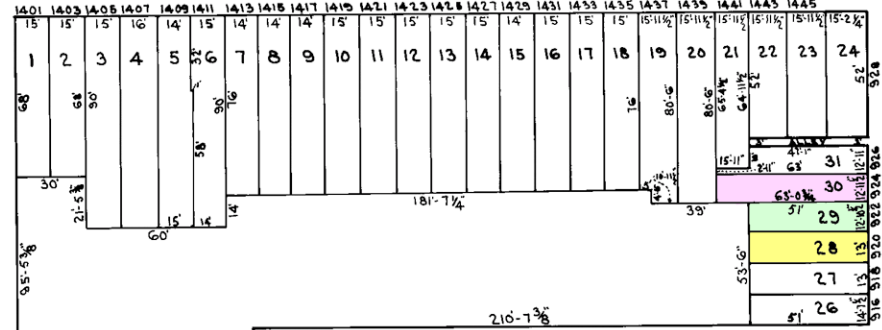
BLK REVISED PER DEED, SUB-DIV, APP'LS, C.S.H. 77-100 - 77-109
 LOTS 36-39 PER; PLS, C.S.H. 78-010
 LOTS 35 HO. NO. CH. SH. TB-003A
 LOTS 26 F41 PER, APP' FORD*457, C.S.H. 80-270

1190

E. EAGER ST.

ST.

ST.



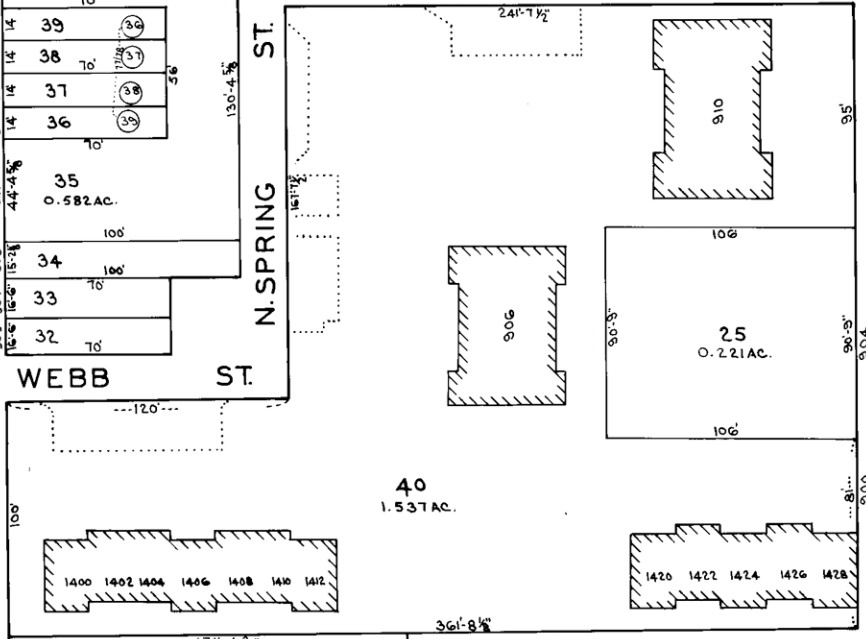
BARNES ST.

N. SPRING ST.

WEBB ST.

N. EDEN

N. CAROLINE



ASHLAND AV.

N. SPRING ST.

1226

1211

1212

NGAY ST.

CITY OF BALTIMORE
 DEPARTMENT OF PUBLIC WORKS

PROPERTY LOCATION DIVISION
 WARD 10 SECTION 10
 BLOCK 1209

SCALE 1" = 50' DATE NOV 1976

NOTICE
 THIS IS A REAL PROPERTY PLAT AS PROVIDED
 FOR UNDER ARTICLE 76(d) OF THE CITY CHARTER
 IT IS COMPILED FROM TITLE AND OTHER
 SOURCES AND IS NOT AN AUTHENTIC SURVEY.

NOTE FOR OLD CONDITIONS SEE SHEET 2.
 STREETS CLOSED BY ORD# 457 5-12-69

TRACED BY D.G.
 LETTERED BY D.G.
 CHECKED BY