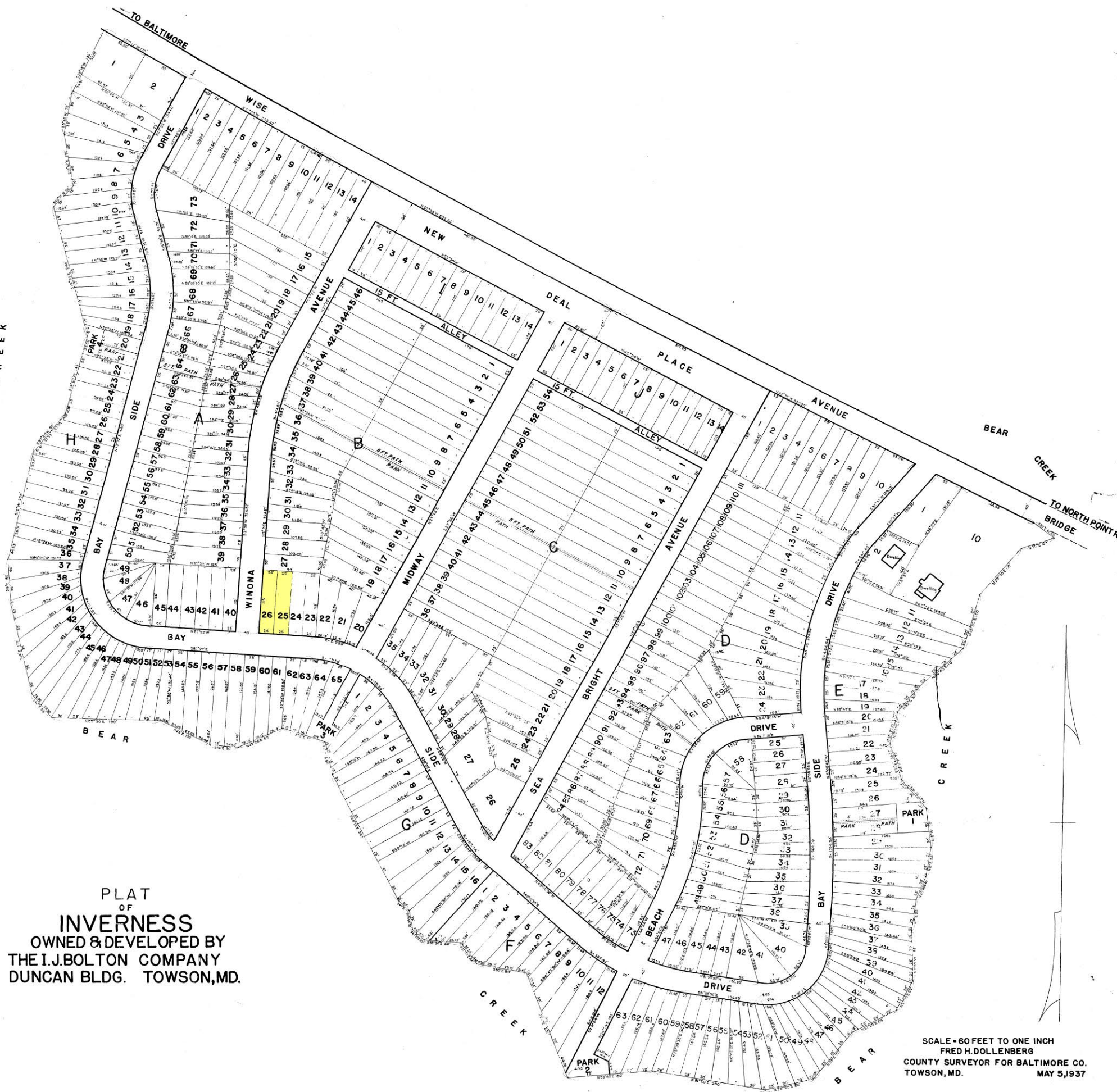




C R E E K



PLAT
OF
INVERNESS
OWNED & DEVELOPED BY
THE I.J. BOLTON COMPANY
DUNCAN BLDG. TOWSON, MD.

SCALE - 60 FEET TO ONE INCH
FRED H. DOLLENBERG
COUNTY SURVEYOR FOR BALTIMORE CO.
TOWSON, MD. MAY 5, 1937

BALTIMORE COUNTY CIRCUIT COURT Case No. 123, MSA, C-135, 2014. Case available 10/27/2018. Printed 10/12/2017.