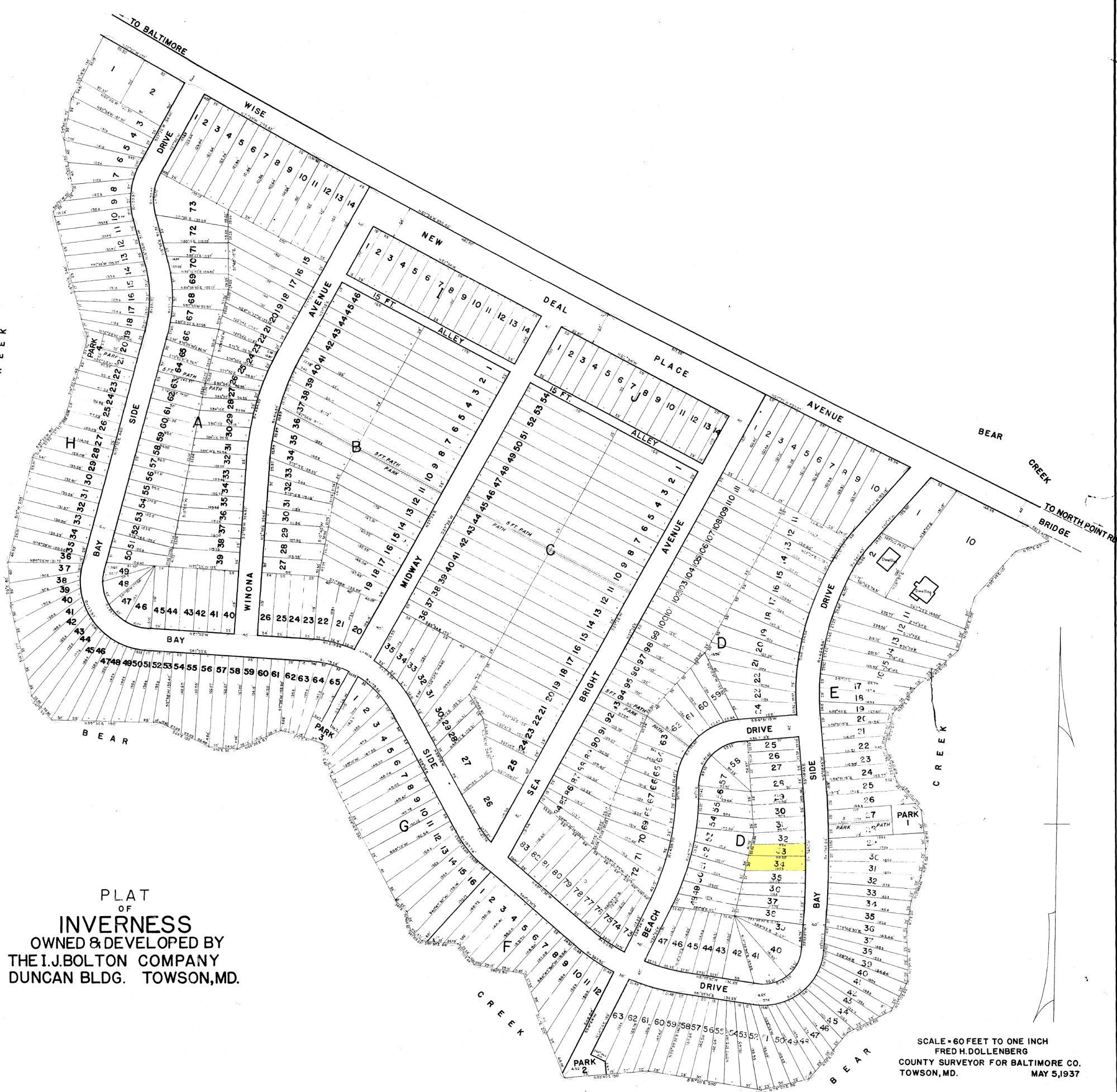




C R E E K



PLAT
OF
INVERNESS
OWNED & DEVELOPED BY
THE I.J. BOLTON COMPANY
DUNCAN BLDG. TOWSON, MD.

SCALE = 60 FEET TO ONE INCH
FRED H. DOLLENBERG
COUNTY SURVEYOR FOR BALTIMORE CO.
TOWSON, MD. MAY 5, 1937