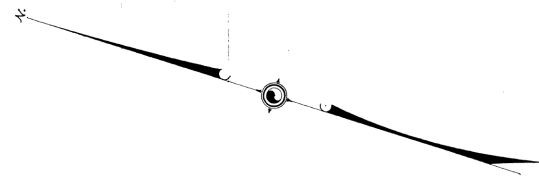


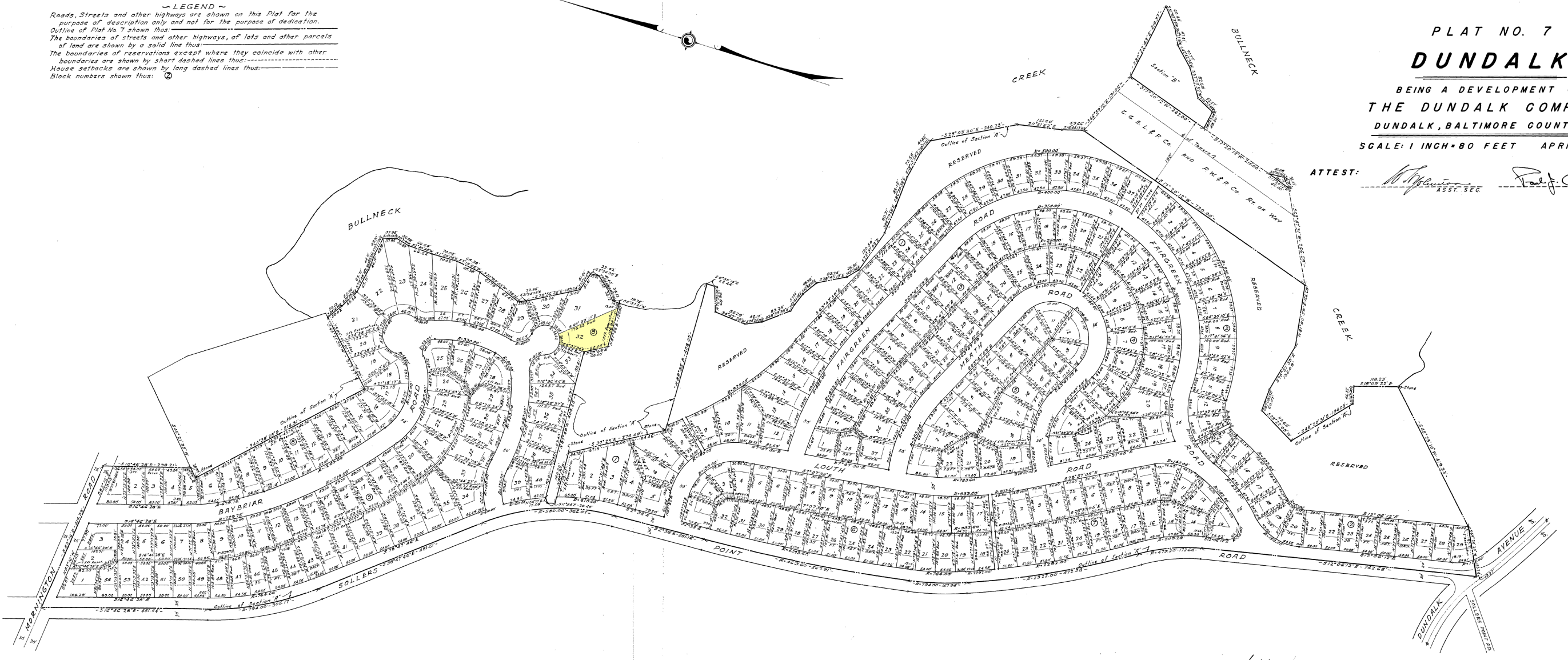


~ LEGEND ~  
 Roads, Streets and other highways are shown on this Plat for the purpose of description only and not for the purpose of dedication.  
 Outline of Plat No. 7 shown thus: \_\_\_\_\_  
 The boundaries of streets and other highways, of lots and other parcels of land are shown by a solid line thus: \_\_\_\_\_  
 The boundaries of reservations except where they coincide with other boundaries are shown by short dashed lines thus: - - - - -  
 House setbacks are shown by long dashed lines thus: - - - - -  
 Block numbers shown thus: ②



PLAT NO. 7  
**DUNDALK**  
 BEING A DEVELOPMENT OF  
 THE DUNDALK COMPANY  
 DUNDALK, BALTIMORE COUNTY, MD.  
 SCALE: 1 INCH = 80 FEET APRIL 1942

ATTEST: *M. J. ...* ASST. SEC. *Paul J. Gandy* VICE PRES.



GEORGE WILLIAM STEPHENS, JUNIOR  
 AND ASSOCIATES  
 ENGINEERS AND LANDSCAPE ARCHITECTS  
 TOWSON, MARYLAND

Approved as to alignment and location of streets: *Herman F. Meyer*  
 ROAD ENGINEER, BALTIMORE COUNTY, MD.