

N. NORRIS ST.

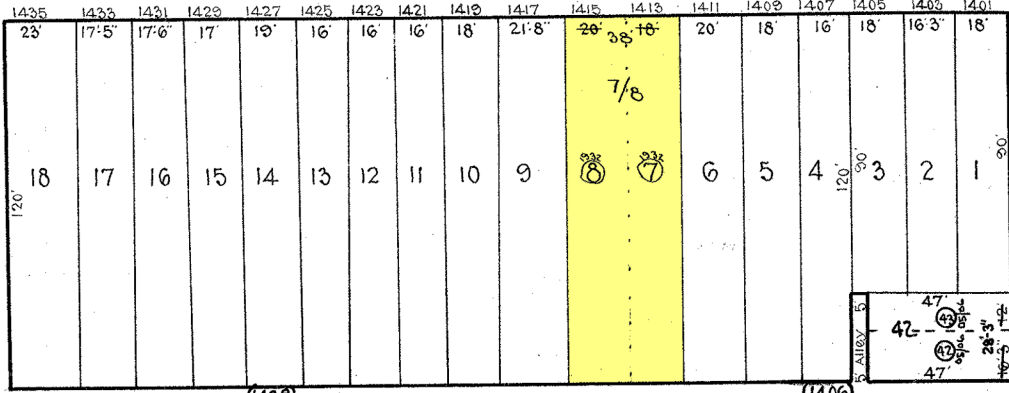
197

W. BALTIMORE ST.

ST.

ST.

ST.

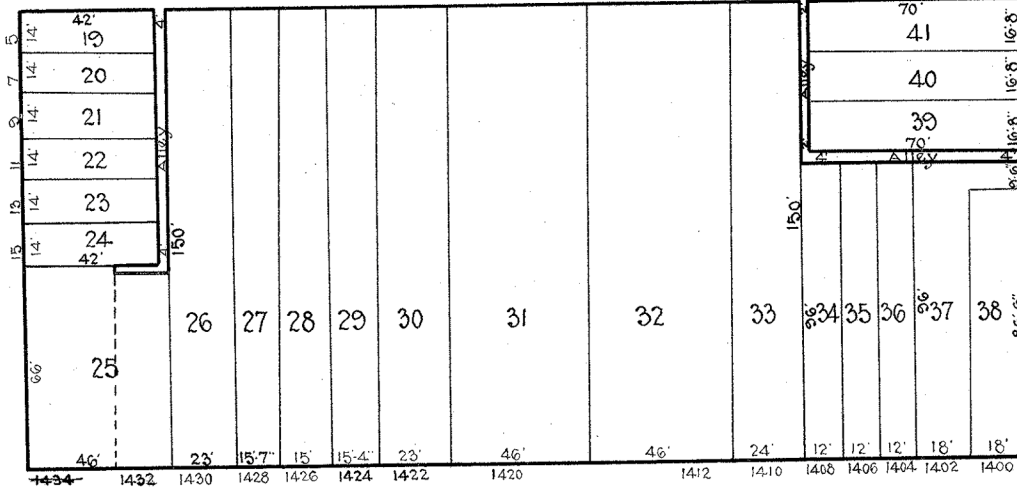


BOOTH

ST.

S. STRICKER

S. CALHOUN



HOLLINS ST.

ST.

S. NORRIS ST.

231

TRACED BY Geo. J. Moorhead.

LETTERED BY W. M. L. & Co.

CHECKED BY

NOTICE

THIS IS A REAL PROPERTY PLAT AS PROVIDED FOR UNDER ARTICLE 76(d) OF THE CITY CHARTER. IT IS COMPILED FROM TITLE AND OTHER SOURCES AND IS NOT AN AUTHENTIC SURVEY.

CITY OF BALTIMORE
 DEPARTMENT OF PUBLIC WORKS
 BUREAU OF SURVEYS
 PROPERTY LOCATION DIVISION

WARD 19 SECTION 13
 BLOCK 214

SCALE 1" = 40'-0" DATE Oct. 1929