

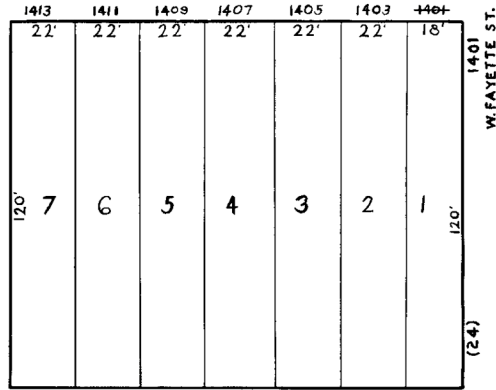
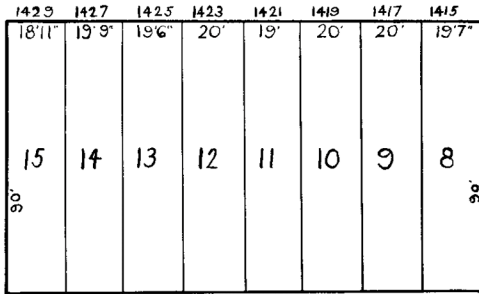
REVISIONS
 Lots 52 to 58 Changed Per Deed CSh 1804A
 Dim. Lot 50 Corrected Per Field & P.L.D. CSh 5498.
 Dim. Lots 49 & 51 Corrected Per Field & P.L.D. CSh 5498A
 Lots 34 & 59 Cons'd Per O.O. CSh 5644
 Lots 16 & 17 Cons'd Per App CSh 88-268

182

W. FAYETTE

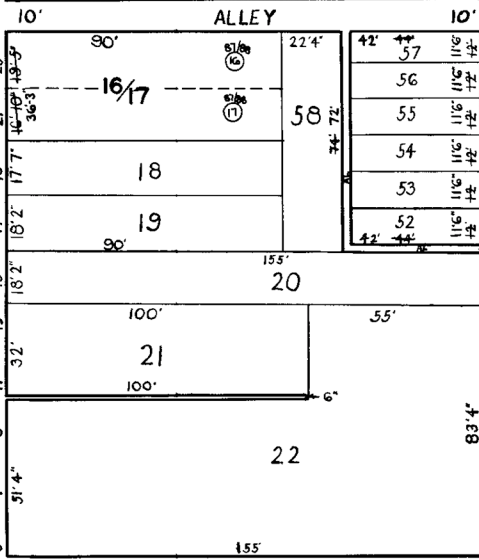
ST.

ST.

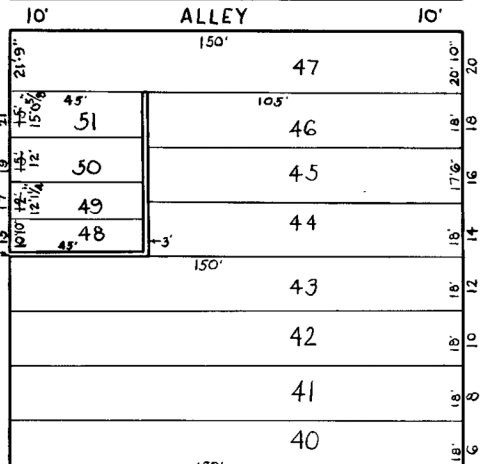


W. FAYETTE ST.

ST.

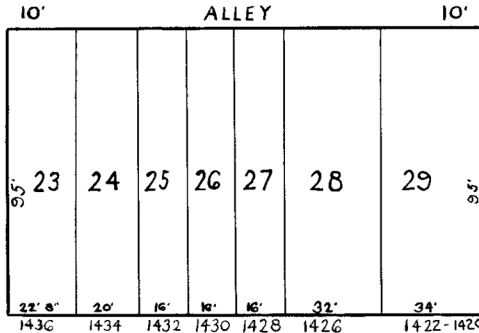


ST.

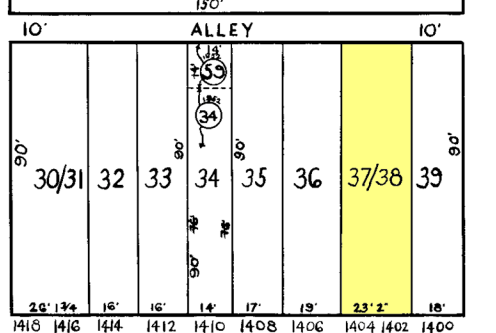


198

N. STRICKER



N. NORRIS



N. CALHOUN

W. BALTIMORE

ST.

214

TRACED BY J.C. Zeiler
 LETTERED BY J.C. Zeiler
 CHECKED BY

NOTICE
 THIS IS A REAL PROPERTY PLAT AS PROVIDED
 FOR UNDER ARTICLE 76(d) OF THE CITY CHARTER.
 IT IS COMPILED FROM TITLE AND OTHER
 SOURCES AND IS NOT AN AUTHENTIC SURVEY.

CITY OF BALTIMORE
 DEPARTMENT OF PUBLIC WORKS
 BUREAU OF SURVEYS
 PROPERTY LOCATION DIVISION
 WARD 19 SECTION 14
 BLOCK 197
 SCALE 1" = 40'-0" DATE June 1951