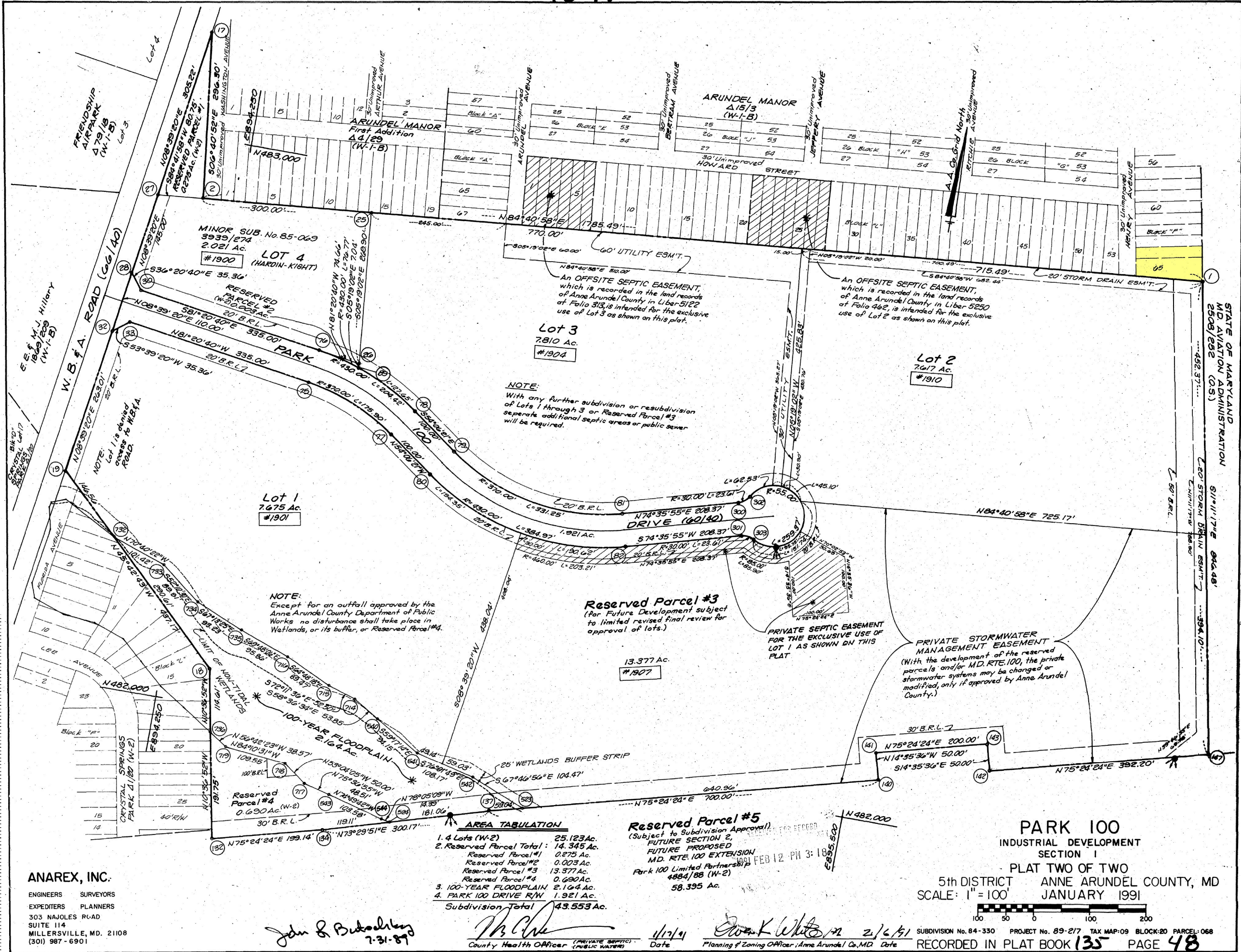


7071

ANNE ARUNDEL COUNTY CIRCUIT COURT (Subdivision Plats, AA) Plat 7070-7071; Plat Book 135, pp. 47-48, MSA\_S1235\_128. Date available 1991/02/12. Printed 04/29/2021.



John S. Butcher  
7-31-87

*[Signature]*  
County Health Officer (PRIVATE SEPTIC) / (PUBLIC WATER)

*[Signature]* 1/17/91  
Planning & Zoning Officer, Anne Arundel Co., MD Date

RECORDED IN PLAT BOOK 135 PAGE 48  
SUBDIVISION No. 84-330 PROJECT No. 89-2/7 TAX MAP:09 BLOCK:20 PARCEL:068

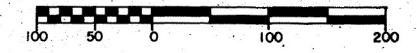
**ANAREX, INC.**  
ENGINEERS SURVEYORS  
EXPEDITORS PLANNERS  
303 NAJLES ROAD  
SUITE 114  
MILLERSVILLE, MD. 21108  
(301) 987-6901

**AREA TABULATION**

1. 4 Lots (W-2)	25.123 Ac.
2. Reserved Parcel Total:	14.345 Ac.
Reserved Parcel #1	0.275 Ac.
Reserved Parcel #2	0.003 Ac.
Reserved Parcel #3	13.377 Ac.
Reserved Parcel #4	0.690 Ac.
3. 100-YEAR FLOODPLAIN	2.164 Ac.
4. PARK 100 DRIVE R/W	1.921 Ac.
<b>Subdivision Total</b>	<b>43.553 Ac.</b>

**Reserved Parcel #5**  
(Subject to Subdivision Approval)  
FUTURE SECTION 2,  
FUTURE PROPOSED  
MD. RTE. 100 EXTENSION  
Park 100 Limited Partnership  
4884/88 (W-2)  
58.395 Ac.

**PARK 100**  
INDUSTRIAL DEVELOPMENT  
SECTION I  
PLAT TWO OF TWO  
5th DISTRICT ANNE ARUNDEL COUNTY, MD  
SCALE: 1"=100'  
JANUARY 1991



001061191

S1235-128-2C