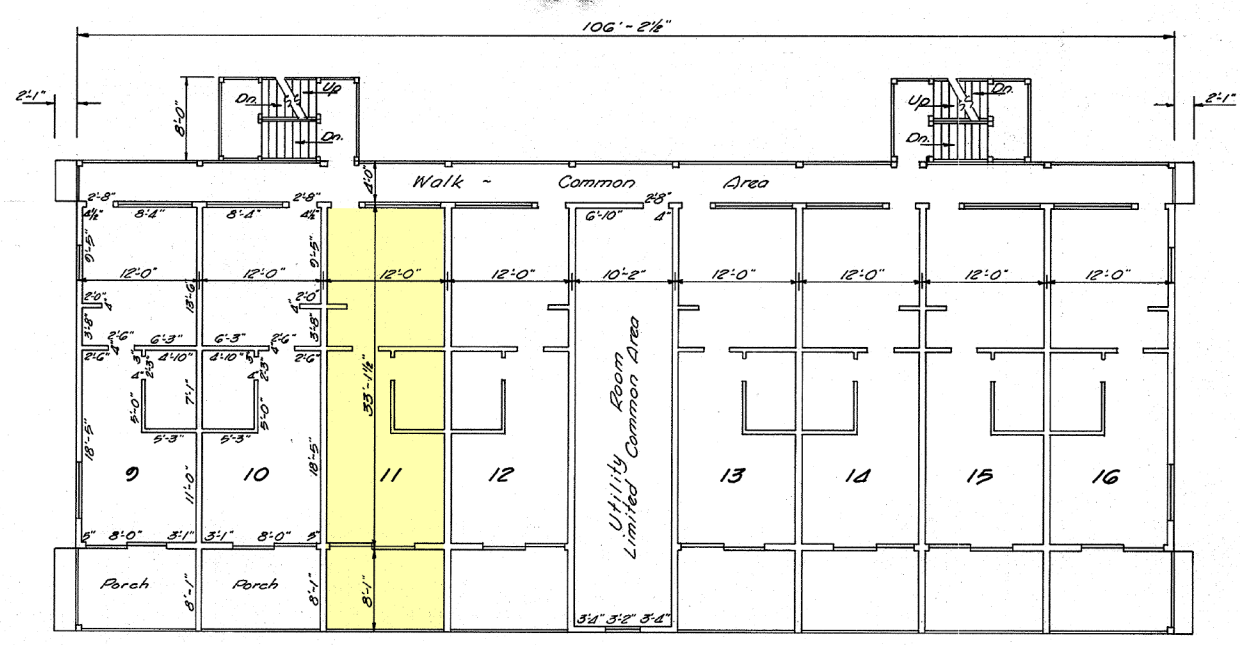
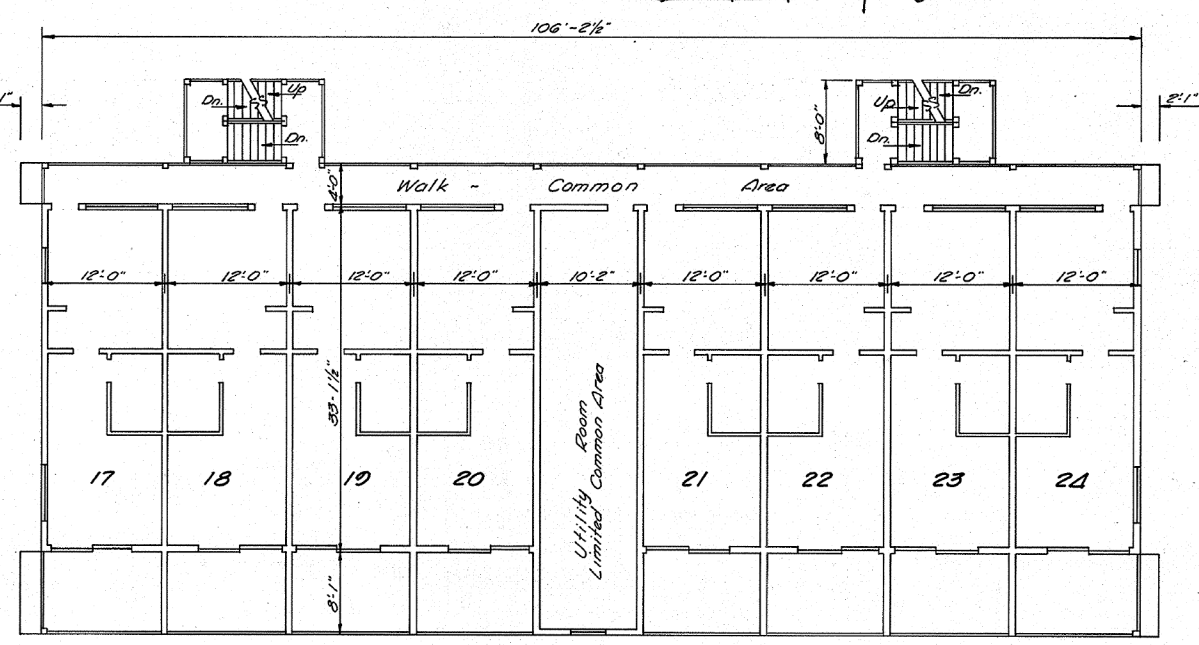


FW.4. 11/16, Filed April 23, 1969
 See: FW.4. 249/633



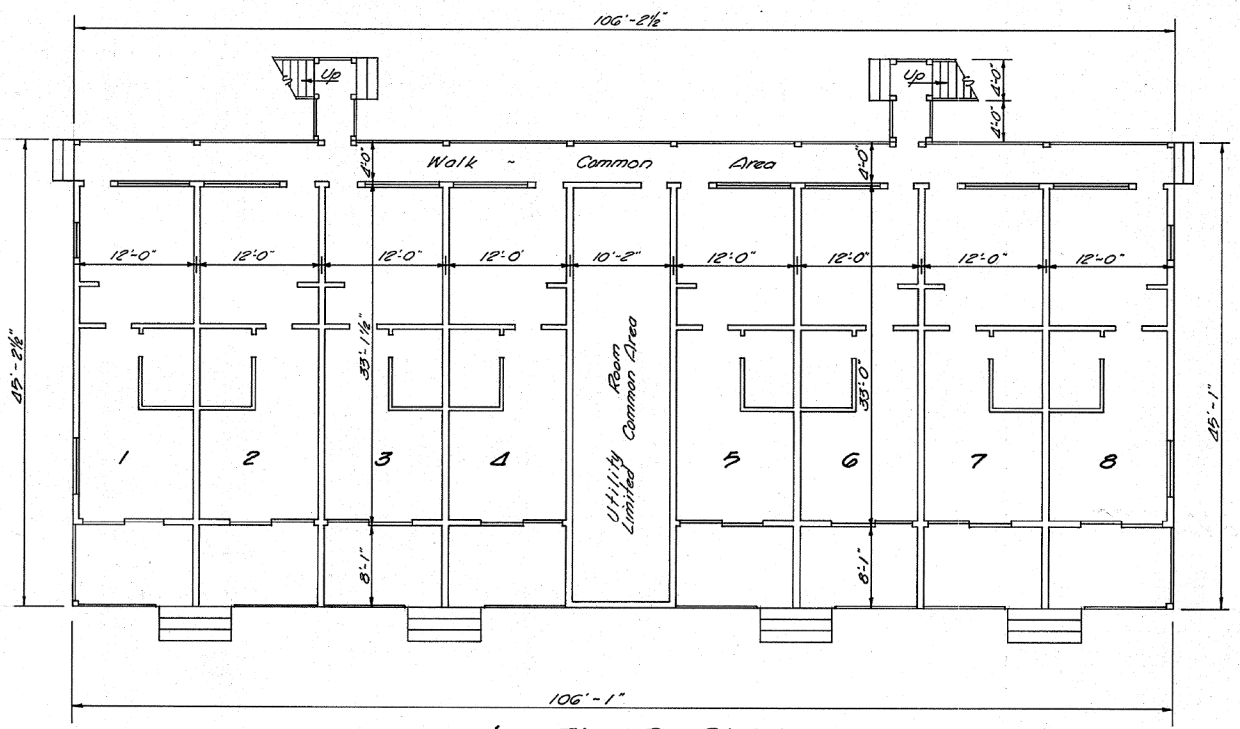
2nd. FLOOR PLAN



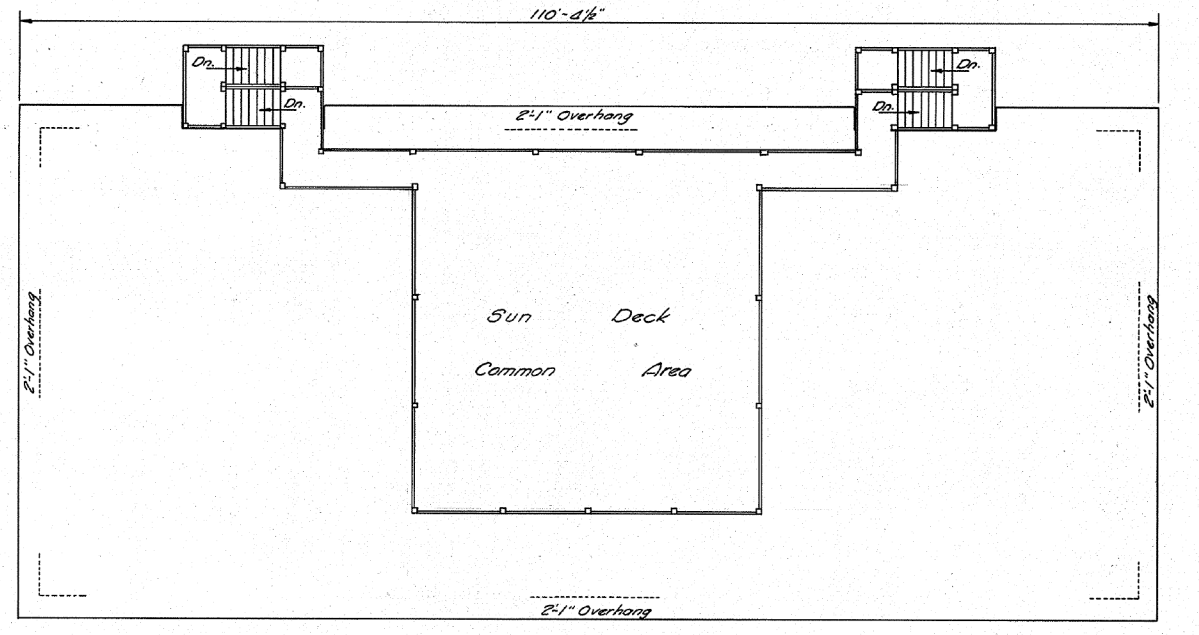
3rd. FLOOR PLAN

NOTE:

Layout of partitions in Units 1, 3, 5, 7, 11, 13, 15, 17, 19, 21 & 23 similar to Unit 9.
 Layout of partitions in Units 2, 4, 6, 8, 12, 14, 16, 18, 20, 22 & 24 similar to Unit 10.



1st. FLOOR PLAN



ROOF PLAN

Sheet 2 of 3
 PLAT OF CONDOMINIUM
BAY SHORE CONDOMINIUM WEST

OCEAN CITY
 WORCESTER COUNTY, MARYLAND
 Scale: 3/32" = 1'
 Feb., 1969

Prepared By
RODGERS & ASSOCIATES
 Box 1832
 Rockville, Md.
 762-6803



2-912-1512 125 109
 104 250 276-2

WORCESTER COUNTY CIRCUIT COURT (Plat-Book) Plat-Book EWH 11, pp. 15-17, MSA_C2157_276 Data available 1969/04/23 Printed 05/04/2022