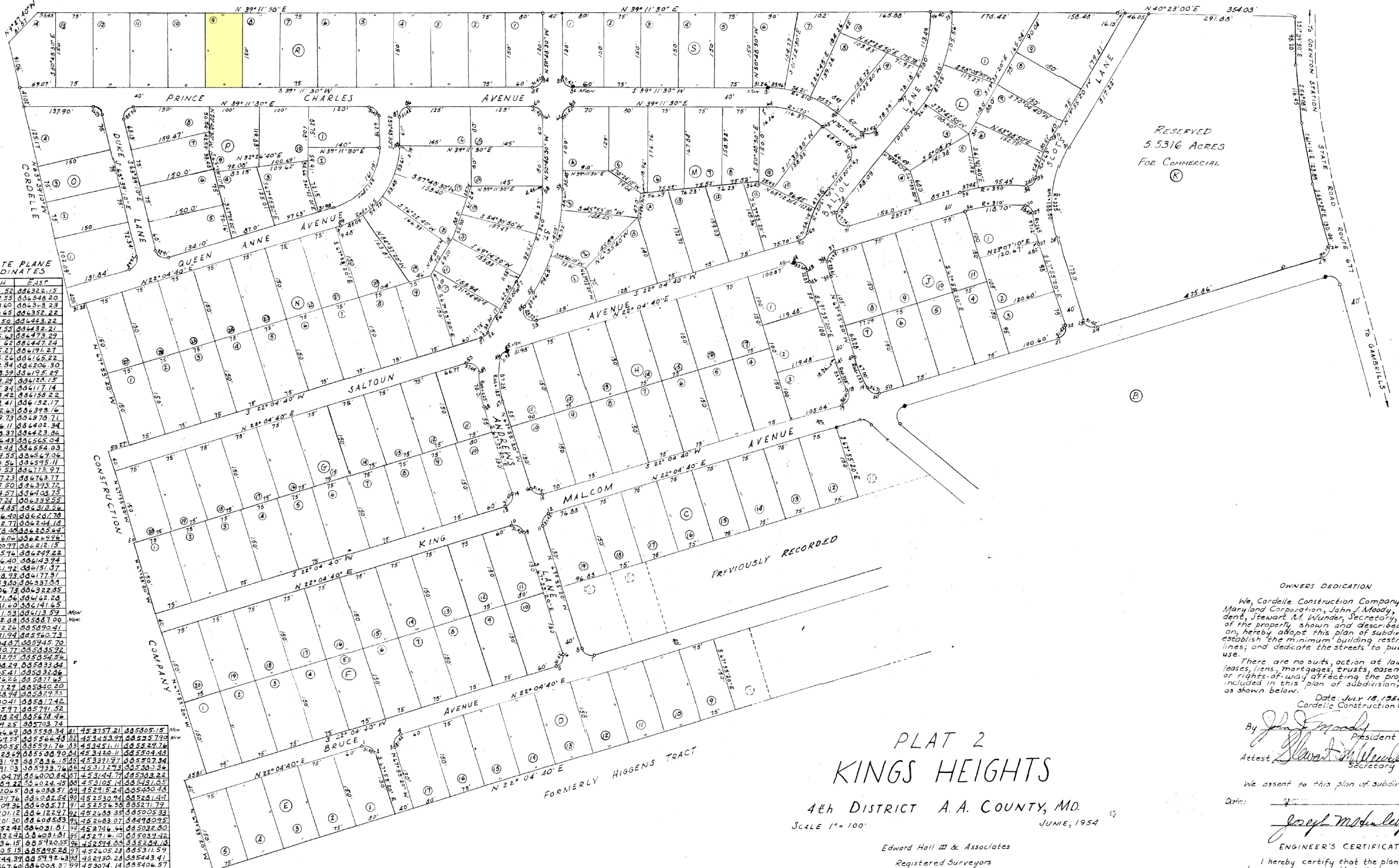


JAMISON PROPERTY



RESERVED
5.5316 ACRES
FOR COMMERCIAL
(K)

MD. STATE PLANE COORDINATES

NORTH	EAST
1 452,276.52	88,632.15
2 452,287.55	88,634.20
3 452,324.60	88,633.23
4 452,350.65	88,632.22
5 452,367.58	88,631.22
6 452,370.55	88,632.21
7 452,355.60	88,633.22
8 452,344.62	88,632.24
9 452,305.27	88,631.21
10 452,274.24	88,631.22
11 452,244.34	88,620.30
12 452,243.39	88,619.29
13 452,207.29	88,618.15
14 452,135.34	88,617.14
15 452,083.72	88,616.22
16 452,072.41	88,615.17
17 452,042.63	88,614.16
18 452,009.73	88,613.70
19 451,952.11	88,612.34
20 451,883.32	88,611.33
21 451,804.43	88,610.04
22 451,712.48	88,608.03
23 451,607.55	88,605.96
24 451,490.56	88,603.11
25 451,361.53	88,600.22
26 451,221.23	88,596.77
27 451,071.50	88,592.72
28 450,914.57	88,588.75
29 450,750.24	88,584.52
30 450,579.41	88,580.24
31 450,404.60	88,575.78
32 450,227.77	88,571.18
33 450,050.53	88,566.64
34 449,874.05	88,562.07
35 449,698.27	88,557.48
36 449,524.40	88,552.82
37 449,352.60	88,548.14
38 449,183.92	88,543.51
39 449,018.35	88,538.91
40 448,855.90	88,534.34
41 448,696.57	88,529.80
42 448,540.36	88,525.29
43 448,387.26	88,520.81
44 448,237.27	88,516.36
45 448,090.38	88,511.94
46 447,946.50	88,507.55
47 447,805.73	88,503.19
48 447,668.07	88,498.86
49 447,533.52	88,494.56
50 447,402.09	88,490.29
51 447,273.78	88,486.04
52 447,148.59	88,481.82
53 447,026.52	88,477.63
54 446,907.57	88,473.47
55 446,791.74	88,469.34
56 446,679.03	88,465.24
57 446,569.44	88,461.17
58 446,462.97	88,457.13
59 446,359.62	88,453.12
60 446,259.39	88,449.14
61 446,162.28	88,445.19
62 446,068.29	88,441.27
63 445,977.42	88,437.38
64 445,889.67	88,433.52
65 445,805.04	88,429.69
66 445,723.53	88,425.89
67 445,645.14	88,422.12
68 445,569.87	88,418.38
69 445,497.72	88,414.67
70 445,428.69	88,410.99
71 445,362.78	88,407.34
72 445,299.99	88,403.72
73 445,240.32	88,400.13
74 445,183.77	88,396.57
75 445,130.34	88,393.04
76 445,080.03	88,389.54
77 445,032.84	88,386.07
78 444,988.77	88,382.63
79 444,947.82	88,379.22
80 444,910.00	88,375.84
81 444,875.31	88,372.49
82 444,843.76	88,369.17
83 444,815.35	88,365.88
84 444,790.08	88,362.62
85 444,767.95	88,359.39
86 444,748.96	88,356.19
87 444,733.11	88,353.02
88 444,720.40	88,349.88
89 444,710.83	88,346.77
90 444,704.40	88,343.69
91 444,701.15	88,340.64
92 444,701.07	88,337.62
93 444,704.18	88,334.63
94 444,709.41	88,331.67
95 444,716.76	88,328.74
96 444,726.23	88,325.84
97 444,737.82	88,322.97
98 444,750.53	88,320.13
99 444,764.36	88,317.32
100 444,779.31	88,314.54

PLAT 2 KINGS HEIGHTS

4th DISTRICT A. A. COUNTY, MD.
SCALE 1" = 100' JUNIE, 1954

Edward Hall III & Associates
Registered Surveyors
Annapolis, Maryland



APPROVED BY THE PLANNING & ZONING COMM. OF ANNE ARUNDEL CO., MD.

August 5, 1954 *Charles J. ...* Public Works Engineer

August 5, 1954 *...* Chairman

THE REQUIREMENTS OF THE ANNE ARUNDEL COUNTY HEALTH DEPARTMENT HAVE BEEN MET IN PREPARING THIS PLAT.

8/10/54 *John W. Boutwell, Jr.* HEALTH OFFICER

ANY LOT TRANSFERRED WILL HAVE A MINIMUM WIDTH AND AREA SUBSTANTIALLY THE SAME AS THOSE SHOWN HEREON, AND ONLY ONE PRINCIPAL BUILDING PER LOT.

THE REQUIREMENTS OF SECTION 72-A, 72-B, 72-C, 72-D OF THE ANNOTATED CODE OF MD., 1939 EDITION (TITLE: CLERKS OF COURT, SUB-TITLE: CLERKS OF CIRCUIT COURTS) AS FAR AS THEY RELATE TO THE MAKING OF THIS PLAT AND SETTING OF THE MARKERS HAVE BEEN COMPLIED WITH.

NOTE: THE RADIUS OF ALL FILLET CURVES IS 20'.

OWNER
John W. Boutwell, Jr.
SURVEYOR

OWNERS DEDICATION

We, Cordelle Construction Company, Inc., a Maryland Corporation, John J. Moady, President, Stewart M. Wunder, Secretary, owners of the property shown and described hereon, hereby adopt this plan of subdivision, establish the minimum building restriction lines, and dedicate the streets to public use.

There are no suits, action at law, leases, liens, mortgages, trusts, easements, or rights-of-way affecting the property included in this plan of subdivision, except as shown below.

Date: July 18, 1954
Cordelle Construction Co., Inc.

By *John J. Moady* President
Attest *Stewart M. Wunder* Secretary

We assent to this plan of subdivision.

Date: *...*

ENGINEER'S CERTIFICATE

I hereby certify that the plan shown hereon is correct; that it is a subdivision of part of the land conveyed by Wallace D. Ketcham, trading as Narcissus Development Co., and Mary J. Ketcham, to the Cordelle Construction Co., Inc. by deed dated June 11, 1954 and recorded in the Land Records of Anne Arundel County in Liber J.M.H. 639 of Folio 45 and that stones, marked thus: \bullet , and iron pipe, marked thus: \circ are in place as shown.

Date: *July 6, 1954*

John W. Boutwell, Jr.
John W. Boutwell Jr., Reg. No. 12245