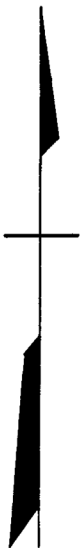


REVISIONS

Lots 9, 25, & 26 Corrected per Deed for 1936 Sh.1005

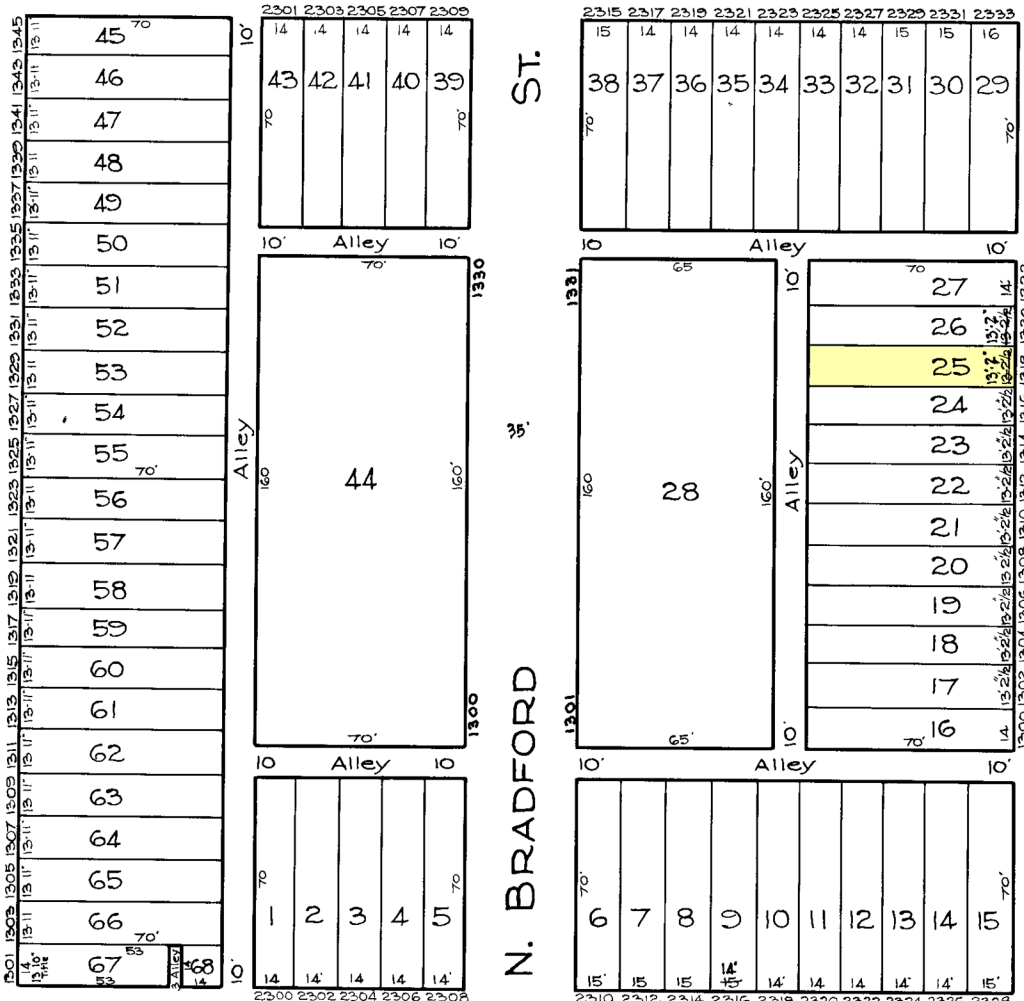


8-14-1903

E. HOFFMAN ST. 66'

N. PATTERSON PARK AVE. 70'

N. MONTFORD AVE. 70'



8/14/1918

8/19/1920

E. PRESTON ST. 66'

TRACED BY R. LITZ
 LETTERED BY Les. J. Rokasky
 CHECKED BY R. LITZ
J.V.R. - BAIN

NOTICE
 THIS IS A REAL PROPERTY PLAT AS PROVIDED FOR UNDER ARTICLE 76(1) OF THE CITY CHARTER IT IS FILED FROM TITLE AND OTHER SOURCES AND IS NOT AN AUTHORITY

CITY OF BALTIMORE
 DEPARTMENT OF PUBLIC WORKS
 BUREAU OF PLANS & SURVEYS
 PROPERTY LOCATION DIVISION
WARD 8 SECTION 14
BLOCK 1519
 SCALE: 1 INCH = 40 FT. DATE April 1929