

LOT 1 - 17665 SQ. FT./0.406 ACRE

Table with columns: LINE, BEARING, DISTANCE, CURVE, RADIUS, ARC LENGTH, CHORD BEARING, CHORD LENGTH. Rows L1-L3.

LOT 2 - 17101 SQ. FT./0.393 ACRE

Table with columns: LINE, BEARING, DISTANCE, CURVE, RADIUS, ARC LENGTH, CHORD BEARING, CHORD LENGTH. Rows L4-L6.

LOT 3 - 25989 SQ. FT./0.597 ACRE

Table with columns: LINE, BEARING, DISTANCE, CURVE, RADIUS, ARC LENGTH, CHORD BEARING, CHORD LENGTH. Rows L7-L9.

LOT 4 - 29016 SQ. FT./0.666 ACRE

Table with columns: LINE, BEARING, DISTANCE, CURVE, RADIUS, ARC LENGTH, CHORD BEARING, CHORD LENGTH. Rows L10-L12.

LOT 5 - 18437 SQ. FT./0.423 ACRE

Table with columns: LINE, BEARING, DISTANCE, CURVE, RADIUS, ARC LENGTH, CHORD BEARING, CHORD LENGTH. Rows L13-L16.

LOT 6 - 20013 SQ. FT./0.459 ACRE

Table with columns: LINE, BEARING, DISTANCE, CURVE, RADIUS, ARC LENGTH, CHORD BEARING, CHORD LENGTH. Rows L17-L19.

LOT 7 - 17460 SQ. FT./0.401 ACRE

Table with columns: LINE, BEARING, DISTANCE, CURVE, RADIUS, ARC LENGTH, CHORD BEARING, CHORD LENGTH. Rows L20-L22.

LOT 8 - 22725 SQ. FT./0.522 ACRE

Table with columns: LINE, BEARING, DISTANCE, CURVE, RADIUS, ARC LENGTH, CHORD BEARING, CHORD LENGTH. Rows L23-L26.

LOT 9 - 23167 SQ. FT./0.532 ACRE

Table with columns: LINE, BEARING, DISTANCE, CURVE, RADIUS, ARC LENGTH, CHORD BEARING, CHORD LENGTH. Rows L27-L30.

LOT 10 - 26400 SQ. FT./0.606 ACRE

Table with columns: LINE, BEARING, DISTANCE, CURVE, RADIUS, ARC LENGTH, CHORD BEARING, CHORD LENGTH. Rows L31-L34.

LOT 11 - 21298 SQ. FT./0.489 ACRE

Table with columns: LINE, BEARING, DISTANCE, CURVE, RADIUS, ARC LENGTH, CHORD BEARING, CHORD LENGTH. Rows L35-L38.

LOT 12 - 18410 SQ. FT./0.423 ACRE

Table with columns: LINE, BEARING, DISTANCE, CURVE, RADIUS, ARC LENGTH, CHORD BEARING, CHORD LENGTH. Rows L39-L43.

LOT 13 - 21691 SQ. FT./0.498 ACRE

Table with columns: LINE, BEARING, DISTANCE, CURVE, RADIUS, ARC LENGTH, CHORD BEARING, CHORD LENGTH. Rows L40-L43.

LOT 14 - 21045 SQ. FT./0.483 ACRE

Table with columns: LINE, BEARING, DISTANCE, CURVE, RADIUS, ARC LENGTH, CHORD BEARING, CHORD LENGTH. Rows L44-L47.

LOT 15 - 18768 SQ. FT./0.431 ACRE

Table with columns: LINE, BEARING, DISTANCE, CURVE, RADIUS, ARC LENGTH, CHORD BEARING, CHORD LENGTH. Rows L48-L50.

LOT 16 - 24212 SQ. FT./0.556 ACRE

Table with columns: LINE, BEARING, DISTANCE, CURVE, RADIUS, ARC LENGTH, CHORD BEARING, CHORD LENGTH. Rows L51-L53.

LOT 17 - 22938 SQ. FT./0.527 ACRE

Table with columns: LINE, BEARING, DISTANCE, CURVE, RADIUS, ARC LENGTH, CHORD BEARING, CHORD LENGTH. Rows L54-L57.

LOT 18 - 17840 SQ. FT./0.410 ACRE

Table with columns: LINE, BEARING, DISTANCE, CURVE, RADIUS, ARC LENGTH, CHORD BEARING, CHORD LENGTH. Rows L58-L60.

LOT 19 - 18186 SQ. FT./0.418 ACRE

Table with columns: LINE, BEARING, DISTANCE, CURVE, RADIUS, ARC LENGTH, CHORD BEARING, CHORD LENGTH. Rows L61-L64.

LOT 20 - 24987 SQ. FT./0.574 ACRE

Table with columns: LINE, BEARING, DISTANCE, CURVE, RADIUS, ARC LENGTH, CHORD BEARING, CHORD LENGTH. Rows L65-L67.

AT THE REQUEST OF HIGHLAND ENGINEERING & SURVEYING, INC. THIS PLAT WAS FILED THE 23rd DAY OF February 2005 IN PLAT CASE DKM 3 FILE 245A.

DEVELOPERS UTILITIES GUARANTEE

ALL LOTS OFFERED FOR SALE IN THE NORTH CAMP SUBDIVISION WILL HAVE THE COMMUNITY WATER SUPPLY AND COMMUNITY SEWERAGE SYSTEM FACILITIES AVAILABLE TO THEM.

Signature of Karen F. Myers, Operating Member, D.C. Development, LLC. Date: 12/20/06.

OWNER'S STATEMENT

WE, THE OWNERS OF THE LAND INVOLVING THE ACCOMPANYING PLANS, STATE THAT WE ARE THE MAJORITY OWNERS OR ARE THE AUTHORIZED OFFICERS OF THE CORPORATION THAT ARE THE MAJORITY OWNERS OF THIS PROPERTY IN PEACEFUL POSSESSION OF IT, AND THAT THERE ARE NO SUITS PENDING AFFECTING THE TITLE OF SAME, AND THAT WE ACKNOWLEDGE AND ENDORSE THE ACCOMPANYING PLANS AND THAT WE WILL PROPOSE A RECORD PLAN FOR RECORDING (AS APPLICABLE), AFTER RECEIVING ALL REQUIRED MUNICIPAL APPROVALS.

Signature of Karen F. Myers, Operating Member, D.C. Development, LLC. Date: 12/20/06.

APPROVAL/REVIEW BLOCK

APPROVED BY THE GARRETT COUNTY PLANNING COMMISSION AND ACCEPTED FOR RECORDING.

Signature of Charles C. Bender, Chairperson. Date: 1-4-06.

GARRETT COUNTY DEPARTMENT OF PUBLIC UTILITIES

THE PROPOSED SYSTEM IMPROVEMENTS SHOWN ON THIS PLAN ARE APPROVED FOR SERVICE BY THE DEEP CREEK LAKE SANITARY SEWERAGE SYSTEM.

Signature of Jeff Gilbert, Department of Public Utilities. Date: 12/22/05.

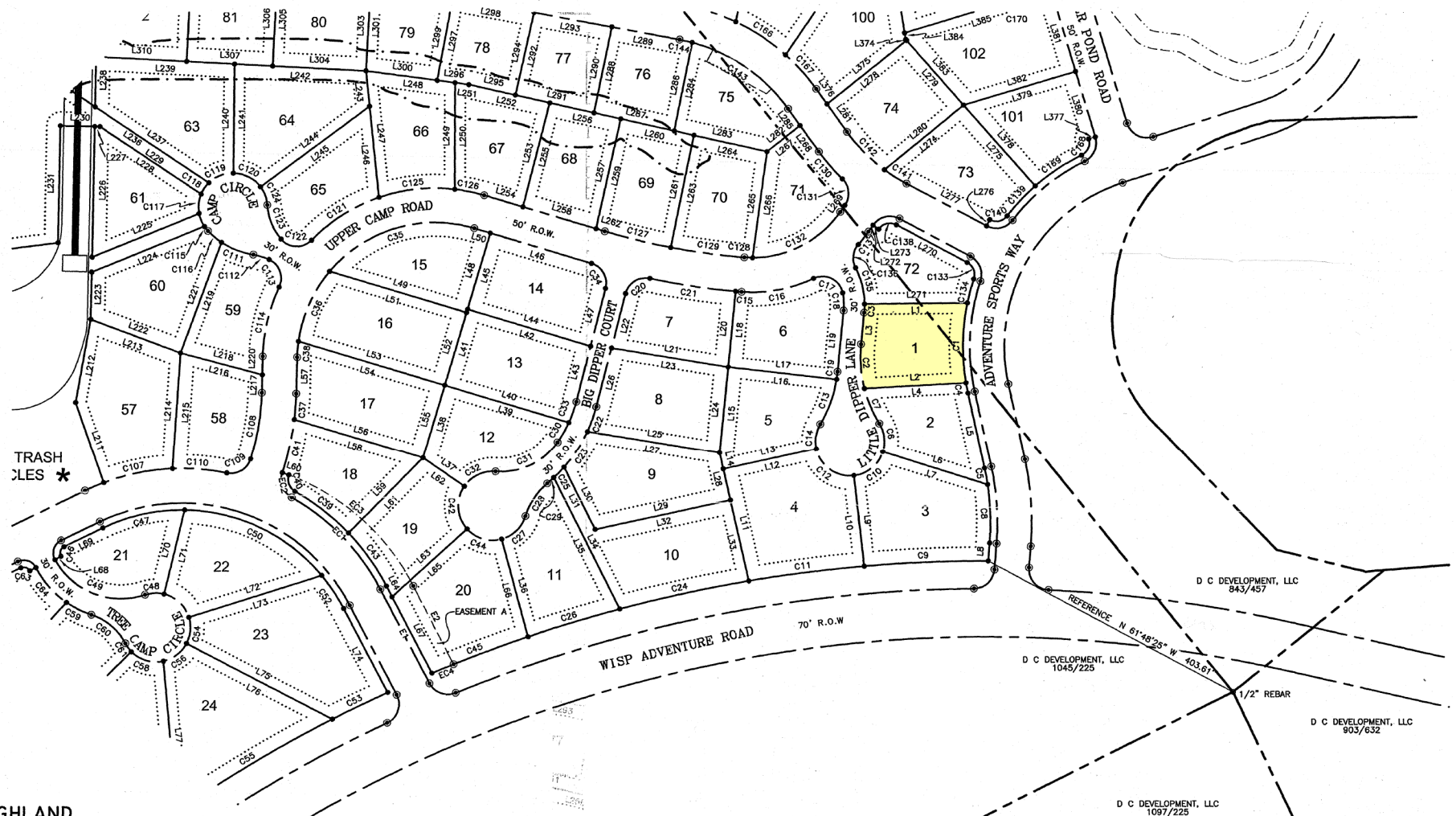
GARRETT COUNTY HEALTH DEPARTMENT APPROVAL

LOTS 1 THROUGH 103 ARE TO BE SERVED BY THE DEEP CREEK LAKE COMMUNITY SEWERAGE SYSTEM AND THE McHENRY COMMUNITY WATER SUPPLY SYSTEM IN CONFORMANCE WITH THE COUNTY WATER AND SEWER PLAN.

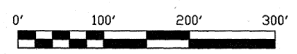
Signature of Stephen J. Sheppard, Garrett County Environmental Health Director. Date: 12/22/05.

TABLE OF DWELLING UNITS FOR PRD. Existing Developed Units: 0. Proposed Units: Phase I-A North Camp (40), Phase I-B North Camp (48), Phase I-C North Camp (15). Remaining Units for Future Development: 2397. Total Number of Dwelling Units Approved for Original PRD: 2500 (remains same).

- NOTES: 1. THE ROADWAYS SHOWN HEREON ARE NOT INTENDED TO BE DEDICATED INTO THE GARRETT COUNTY ROAD SYSTEM. 2. ALL LOTS SIDELINES ARE SUBJECT TO A TEN FOOT DRAINAGE AND UTILITY EASEMENT. 3. A TEN FOOT UTILITY AND DRAINAGE EASEMENT IS RESERVED ALONG ALL ROADWAYS. 4. THE DEVELOPER RESERVES THE RIGHT, THROUGH THE ARCHITECTURAL REVIEW COMMITTEE TO DICTATE SIZE AND PLACEMENT OF ALL IMPROVEMENTS. UNDER NO CIRCUMSTANCES WILL ANY IMPROVEMENTS OR CASTING OF SPOIL BE ALLOWED ON THE 30% SLOPES. 5. DEVELOPER - D.C. DEVELOPMENT, LLC 212 MARSH HILL ROAD McHENRY, MARYLAND 21541. 6. LAND OWNER - D.C. DEVELOPMENT, LLC (LIBER 843, PAGE 457, LIBER 903, PAGE 632, LIBER 1045, PAGE 225 & LIBER 1097, PAGE 225). 7. PART OF TAX MAP 49, PARCELS 28, 124, 128, 130 & 133, ELECTION DISTRICT 6. 8. A) THE TOTAL ACREAGE OF THE PRD IS 2301.94 ACRE. B) THE OVERALL DENSITY OF THE PRD IS ONE DWELLING UNIT PER ACRE. 9. BUILDING SETBACK LINES: FRONT 20' REAR 20' SIDE 15'. 10. SETBACK OF 1' REQUIRED FROM 30% SLOPES. 11. CORNERS MARKED THUS: HAVE BEEN 1/2" REBAR WITH CAP OR MAG NAIL WITH WASHER SET.

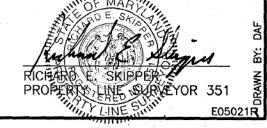


LEGEND: TRACT BOUNDARY (solid line), LOT BOUNDARY (dashed line), BUILDING SETBACK LINE (dotted line), LIMIT OF 30% SLOPE (long dashed line), EASEMENT (short dashed line).



SHEET 1 OF 3 RECORD PLAT OF NORTH CAMP ELECTION DISTRICT NO. 6, GARRETT COUNTY, MARYLAND SCALE: 1" = 100' DATE: NOVEMBER 2005 SURVEYOR'S CERTIFICATE

To all parties interested in the title to the property surveyed; I hereby certify that the property corners marked thus: o have been found and that property corners marked thus: ● have been 1/2" rebar with cap set and that property corners marked thus: @ are calculated points according to field survey in conjunction with the town records of said county and are correct to the best of my knowledge and belief, said locations are subject to change upon discovery of new and superior evidence.



HIGHLAND ENGINEERING & SURVEYING, INC. Telephone: 301-334-8185 1426 Memorial Drive Oakland, Maryland 21550

EASEMENT A - 10740 SQ. FT./0.247 ACRES

Table with columns: LINE, BEARING, DISTANCE, CURVE, RADIUS, ARC LENGTH, CHORD BEARING, CHORD LENGTH. Rows E1-E4.

GARRETT COUNTY CIRCUIT COURT (Subdivision Plats, GA) Plat Case DKM File 3, pp. 245A-245F, MSA, 51245-1488. Date available 2006/02/23. Printed 05/10/2022.

DEEP CREEK HIGHLANDS MERIDIAN DRAWN BY: DAF

Handwritten notes: P119475, MSA 35u 1245 1488-1 245A