

OWNER'S CERTIFICATE

I hereby certify that the plan shown hereon is correct; that it is a subdivision of the lands conveyed by St. Charles City, Inc. to Interstate Land Development Inc. by deed dated November 22, 1968 and recorded among the Land Records of Charles County, Maryland in liber 199 at folio 436 and subsequently conveyed to St. Charles Associates by deed dated May 25, 1976 and recorded among the aforesaid land records in liber 454 at folio 21 and that property markers shown thus: ● are in place where indicated. * that it is also part of Tract 17-C (P.B. 20) Pg. 234 conveyed by St. Charles Associates to Cenna Corporation by deed dated June 24, 1987 and recorded among the aforesaid Land Records of Charles County, Maryland in Liber 1225 at Folio 186.

Date: 7-13-88

William H. Crane
 William Henry Crane P.L.S.
 # 377 Maryland



OWNER'S DEDICATION

We, St. Charles Associates Limited Partnership by Interstate General Company L.P., General Partner of St. Charles Associates, owners of the property hereby adopt this plan of subdivision. There are no suits, actions - at - law, leases, liens, mortgages, trusts, easements or rights - of - way affecting the property included in this plan of subdivision unless otherwise shown or noted; And all parties in interest thereto have hereunto affixed their signatures indicating their assent to this plan of subdivision.

Patrick R. Duley
 Witness

Date: 5/10/88

St. Charles Associates Limited Partnership
 St. Charles Associates Limited Partnership by Interstate General Company L.P., General Partner

and Cenna Corporation
 witness

By: *Di Ceresa*

Deed of Trust L.1225/F.187

Patrick R. Duley, Trustee *Michael R. Jarboe, Trustee*

CURVE DATA

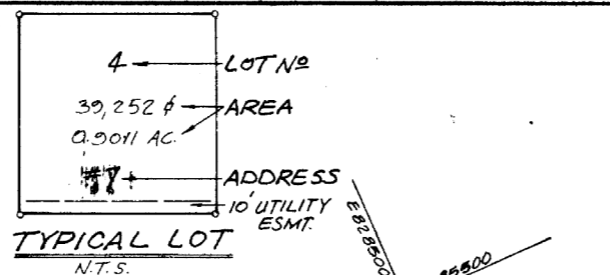
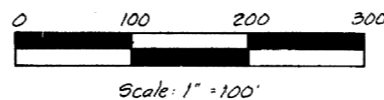
No.	Radius	Arc.	Δ	Tan.	Chord
1	270.00'	163.17'	84° 37' 46"	84.17	S 72° 41' 07" E - 160.71'
2	590.00'	198.77'	23° 34' 19"	68.86	S 78° 12' 50" E - 134.81'
3	390.00'	170.87'	29° 40' 15"	87.41	N 70° 12' 21" W - 168.77'
4	270.00'	111.08'	23° 34' 19"	56.34	N 78° 12' 50" W - 110.30'

APPROVED FOR PUBLIC SEWER AND WATER WHEN AVAILABLE AND UPON ISSUANCE OF PERMIT

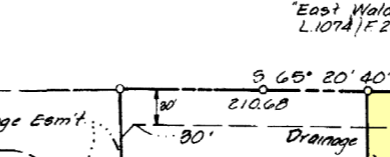
Note: The area included in this plan is consistent with the Charles County Comprehensive water and sewer plan.

STATE OF MARYLAND
 DEPARTMENT OF HEALTH
 DIVISION OF WATER & SEWERAGE
 CONSTRUCTION PERMIT

WATER: 88-12-578
 SEWERAGE: 88-22-579



DETAIL
 Scale: 1" = 50'

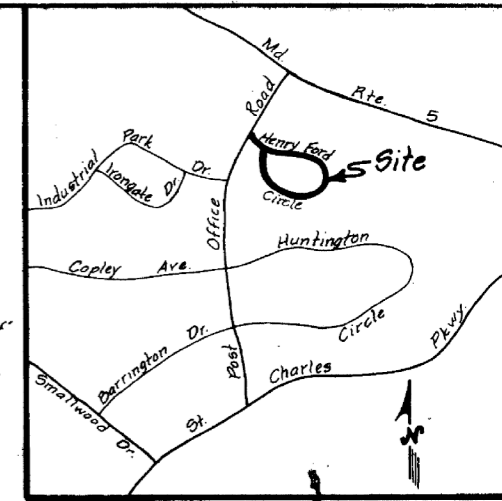


POST OFFICE ROAD
 (80' R/W) P.B. 18/P. 116
 N 34° 56' 31" E 120.00'
 N 34° 56' 31" E 120.00'

ALLOCATION(S) GRANTED		
WATER: WS 05C 88WF (35,000 GPD)	2/18/88	
REF. #	DATE	
SEWER: WS 05C 88MT (35,000 GPD)	2/18/88	
REF. #	DATE	
EXPIRATION DATE: 8 / 89		
MO. YR.		
INFORMATION BY: Andrew Martin		

CHARLES COUNTY DEPT. OF PUBLIC WORKS
 Date: SEP 02 1988 Approved: *Roy E. Cannon*

CHARLES COUNTY PLANNING COMMISSION
 Date: 23 Sept 1988 Approved: *Andrew Martin*



VICINITY MAP Scale: 1" = 2000'

AREA TABULATION

Plat One

Total Lots	7,7325 Ac.
Road Dedication	2,0730 Ac.
Total Plat	9,8055 Ac.

NOTES

- Approval of this plat subject to the terms and conditions of indenture by and between Interstate Land Development Company Inc. and the County Commissioners of Charles County, Maryland dated July 12, 1972, and recorded among the Land Records of Charles County, Maryland in liber 259 folio 60, and the findings of fact and the conclusions of law and order of the County Commissioners of Charles County, Maryland in docket 90 dated July 12, 1972, and recorded among the Land Records of Charles County, Maryland in liber 259 at folio 63.
- The approval of this plat is based upon a reasonable expectation that the water and sewer service which is planned for, for the development will be available when needed. However, building permits may not be issued until the planned water and sewer facilities are completed and determined to be adequate to serve the proposed development.

Approved

AUG 10 1988
 CHARLES COUNTY HEALTH DEPT
 LA PLATA, MARYLAND

St. Charles Industrial Park East
 Plat One
 St Charles Communities
 White Plains Election District No. 6
 Charles County, Maryland

SCALE: 1" = 100' DATE: Oct 7, 1987

KIDDE CONSULTANTS, INC.
 ENGINEERS · ARCHITECTS · PLANNERS
 513 EAST CHARLES STREET P O BOX 1066
 LA PLATA, MARYLAND 20646
 TELEPHONE - AREA CODE 301-934-2503