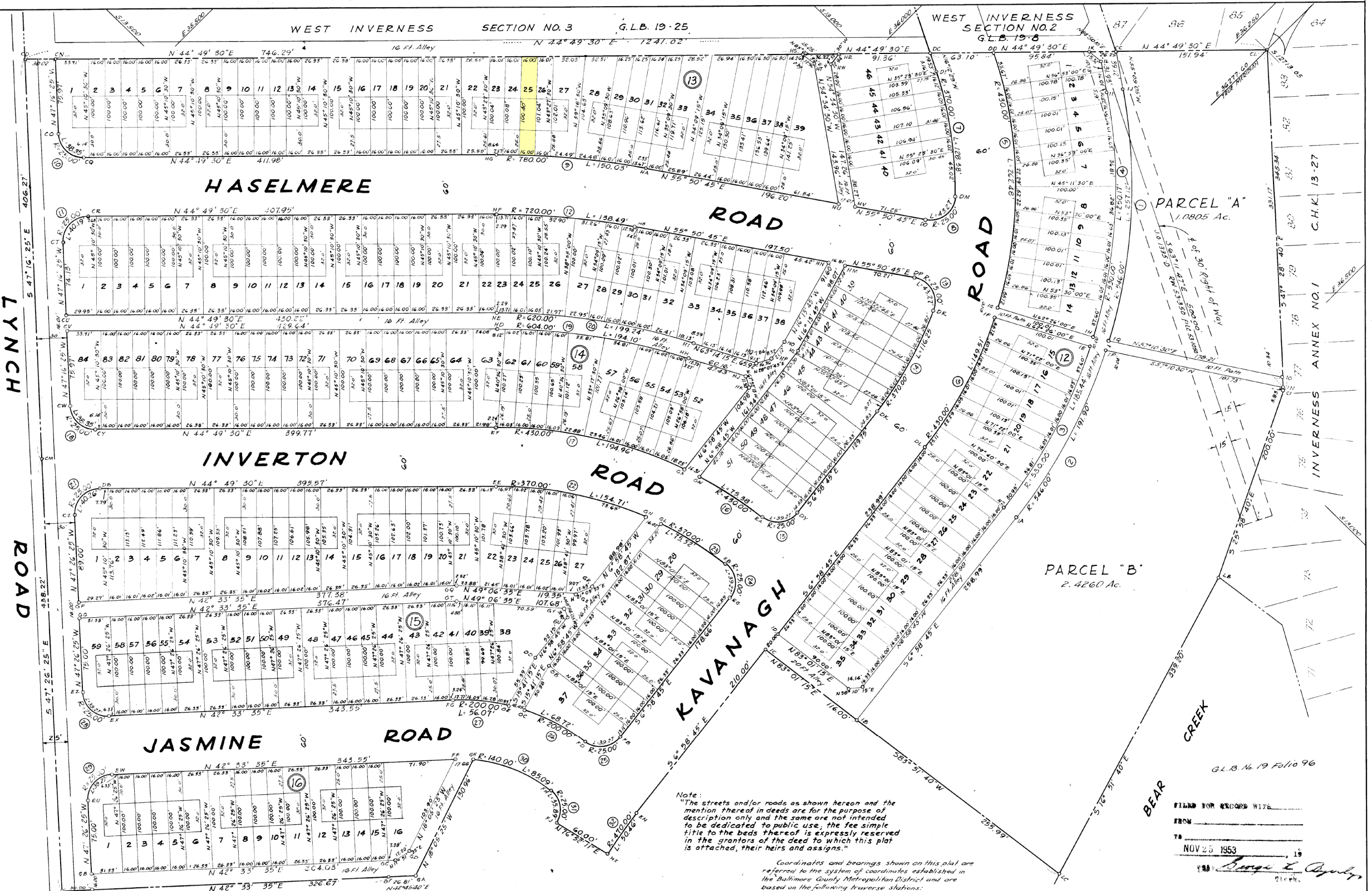


BALTIMORE COUNTY CIRCUIT COURT (Subdivision Plats, BA) Plat Book G.L.B. 19, p. 96, MSA, 51236, 864. Date available: 1953/11/25. Printed 05/10/2022.

CURVE DATA table with columns: No., Radius, Central Angle, Arc, Tangent, Chord, Chord Bearing. Rows 1-32.

COORDINATES table with columns: EAST, SOUTH. Includes BLOCK 13, 14, 15, 16, 12, PARCELS A & B, and KAVANAGH ROAD.



Note: The streets and/or roads as shown hereon and the mention thereof in deeds are for the purpose of description only and the same are not intended to be dedicated to public use...

Coordinates and bearings shown on this plat are referred to the system of coordinates established in the Baltimore County Metropolitan District and are based on the following traverse stations:

WEST INVERNESS PLAT NO. 4

12TH. ELECT. DIST., BALTIMORE CO. MD.

VIRGINIA CORP. 514 ST. PAUL STREET BALTIMORE 2, MD.

APPROVED: [Signature] COUNTY ROADS ENGINEER DATE: Nov. 20, 1953

OWNER'S CERTIFICATE VIRGINIA CORP. [Signature]

ENGINEER'S CERTIFICATE ALBERT E. POMMER Registered Professional Engineer and Land Surveyor



ALBERT E. POMMER REGISTERED ENGINEER & LAND SURVEYOR OFFICE: 1100 W. 50th Street, BALTIMORE, MD. DATED: Oct. 20, 1953

FILED FOR RECORD WITH FROM NOV 25 1953 [Signature]

Drawn by DJC Checked by HEM Date Oct. 20, 1953