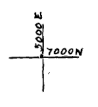
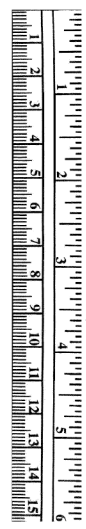
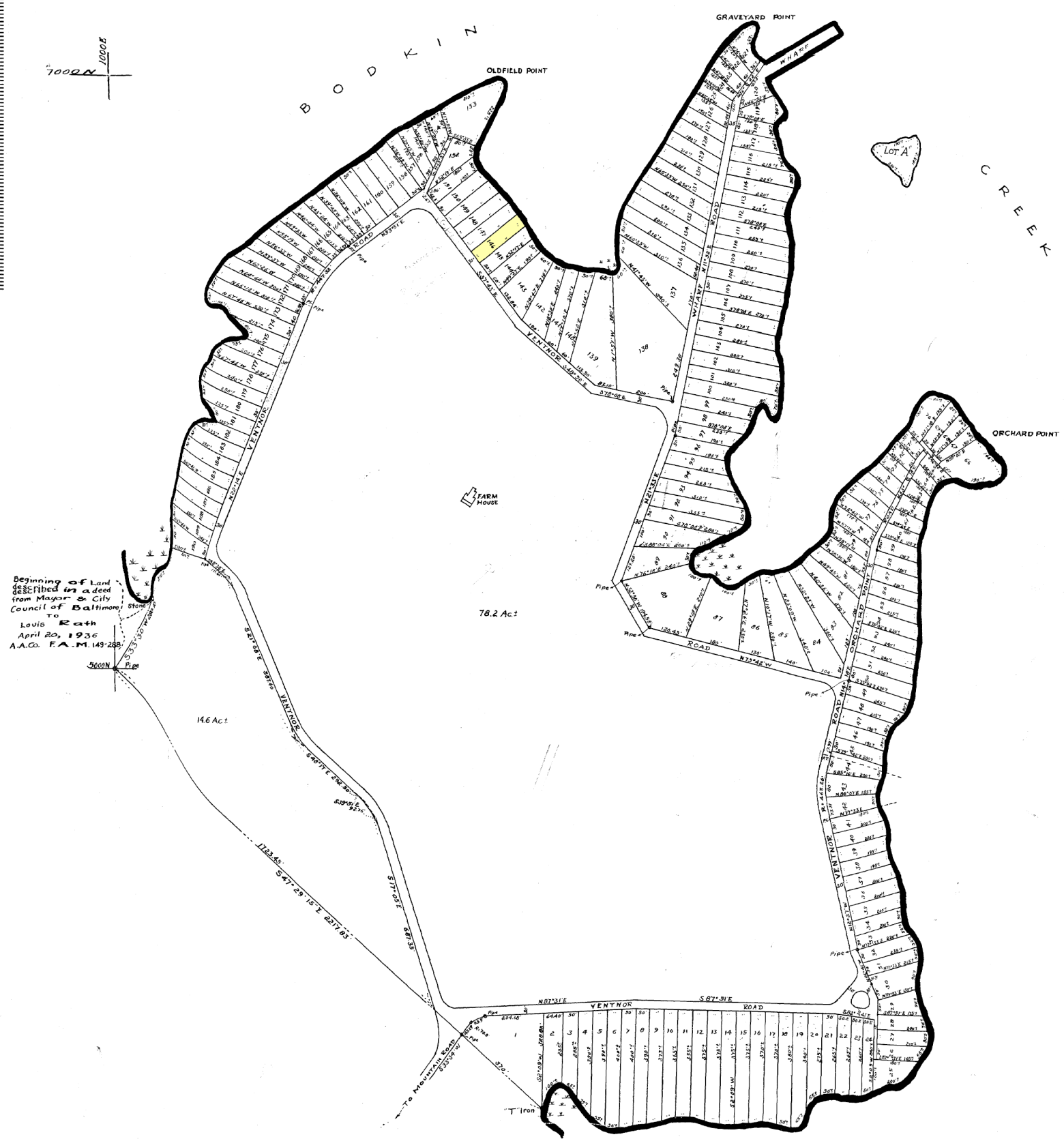


ANNE ARUNDEL COUNTY CIRCUIT COURT (Plat Book, Oversize Copy) Plat Book 10, p. 22; Plat 557, MSA_C2323_589. Date available 1937/06/30. Printed 08/18/2021.



B O D K I N Z



Beginning of Land described in a deed from Mayor & City Council of Baltimore to Louis Rath April 20, 1936 A.A.C. F.A.M. 143-288

#557
(Filed June 30, 1937)

"VENTNOR"

ANNE ARUNDEL COUNTY, MD.

LOUIS RATH
BALTIMORE, MARYLAND.

ALBERT E FOHMER
SURVEYOR & CIVIL ENGR.

OFFICE: 20 E. LEXINGTON ST. BALTIMORE
SCALE: 1"=200' ISSUED: 4-27-37