

REVISIONS

Block changed per P.S. C.Sh. 3054

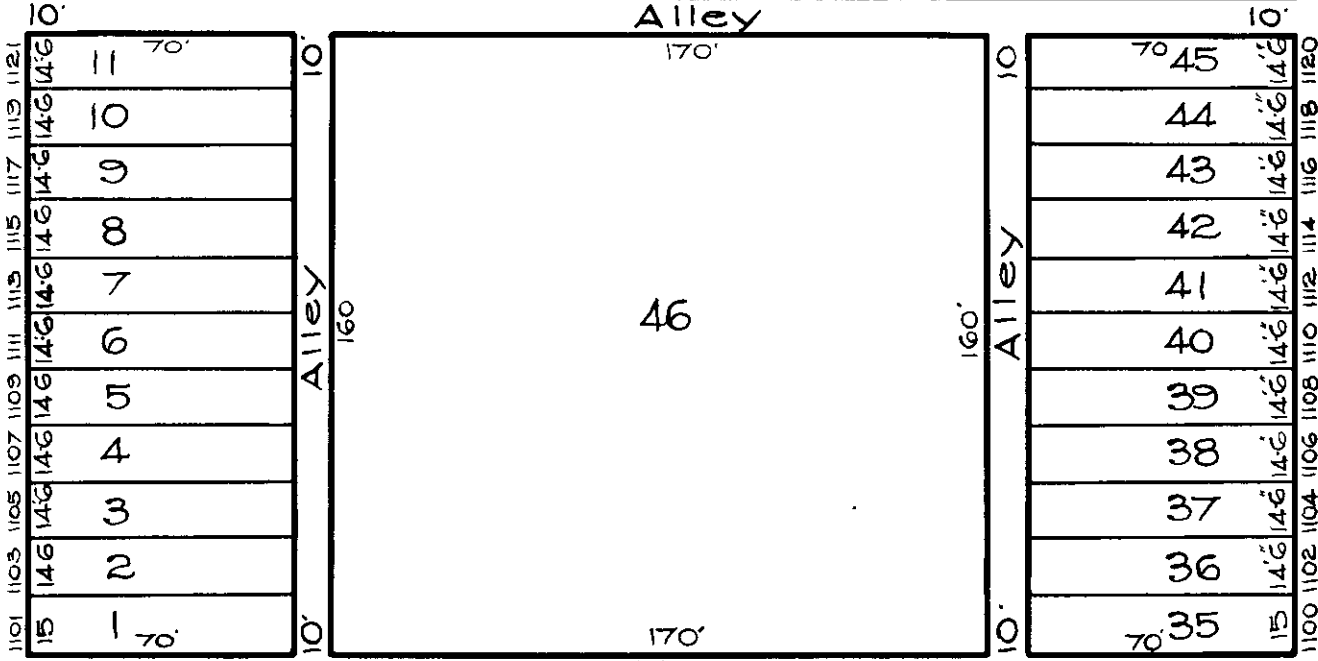
E. BIDDLE ST.

ST.

AVE.

2701	2703	2705	2707	2709	2711	2713	2715	2717	2719	2721	2723	2725	2727	2729	2731	2733	2735	2737	2739	2741	2743	2745
18'	14	14	14	14	14	14	14	14	14	14	14	14	14	14	14	14	14	14	14	14	14	18
12	12 A	12 B	12 C	12 D	12 E	12 F	12 G	12 H	12 I	12 J	12 K	12 L	12 M	12 N	12 O	12 P	12 Q	12 R	12 S	12 T	12 U	12 V
70'										70'												70'

AVE.



N. LAKEWOOD

1101	1103	1105	1107	1109	1111	1113	1115	1117	1119	1121											
15	14	14	14	14	14	14	14	14	14	14											
15	15	15	15	15	15	15	15	15	15	15											
13	14	15	16	17	18	19	20	21	22	23	24	25	26	27	28	29	30	31	32	33	34
70'										70'											70'
2700	2702	2704	2706	2708	2710	2712	2714	2716	2718	2720	2722	2724	2726	2728	2730	2732	2734	2736	2738	2740	2742

N. KENWOOD

E. CHASE ST.

ST.

NOTE: BLOCK 8-15-1558 FOR 1943

NOTICE

THIS IS A REAL PROPERTY PLAT AS PROVIDED FOR UNDER ARTICLE 10 OF THE CITY CHARTER. IT IS COMPILED FROM TITLE AND OTHER SOURCES AND IS NOT AN AUTHENTIC SURVEY.

CITY OF BALTIMORE
DEPARTMENT OF PUBLIC WORKS
BUREAU OF PLANS & SURVEYS
PROPERTY LOCATION DIVISION

WARD 8 SECTION 22
BLOCK 1558

SCALE 1/4" = 50 FT. DATE April 1929

TRACED BY Moorehead
LETTERED BY Jos. J. Rokosky
CHECKED BY R. LITZ
J.J.R. - BAIN